



Australian Government
Department of Industry,
Science and Resources

**National
Measurement
Institute**

36 Bradfield Road, West Lindfield NSW 2070

**Supplementary Certificate of Approval
NMI S856**

Issued by the Chief Metrologist under Regulation 60
of the
National Measurement Regulations 1999

This is to certify that an approval for use for trade has been granted in respect of the instruments herein described.

Soulbook Pty Ltd Model MetaPOS Point of Sale (POS) System

submitted by SoulBook Pty Ltd
42 Nossal Drive
POINT COOK VIC 3030

NOTE: This Certificate relates to the suitability of the pattern of the instrument for use for trade only in respect of its metrological characteristics. This Certificate does not constitute or imply any guarantee of compliance by the manufacturer or any other person with any requirements regarding safety.

This approval has been granted with reference to document NMI M 7, *Pattern Approval Specifications for Point of Sale Systems*, dated June 2012.

This approval is subject to review at the decision of the Chief Metrologist in accordance with the conditions specified in the document NMI P 106.

DOCUMENT HISTORY

Rev	Reason/Details	Date
0	Pattern approved – certificate issued	15/08/24

CONDITIONS OF APPROVAL

General

Instruments purporting to comply with this approval shall be marked with pattern approval number 'NMI S856' and only by persons authorised by the submittor.

It is the submittor's responsibility to ensure that all instruments marked with this approval number are constructed as described in the documentation lodged with the National Measurement Institute (NMI) and with the relevant Certificate of Approval and Technical Schedule. Failure to comply with this Condition may attract penalties under Section 19B of the National Measurement Act and may result in cancellation or withdrawal of the approval, in accordance with document NMI P 106.

Special

Certain aspects of this instrument (in particular transaction record printing formats) are able to be configured by the user. Whilst NMI believes that acceptable formats can be achieved for typical basic sales modes, it is also possible for the instrument to be configured to produce unacceptable formats, and use of some formats may be inappropriate for different sales modes. It is the responsibility of the user to ensure that acceptable and appropriate formats are used in any particular situation.

Signed by a person authorised by the Chief Metrologist to exercise their powers under Regulation 60 of the *National Measurement Regulations 1999*.



Darryl Hines
Manager
Policy and Regulatory Services

TECHNICAL SCHEDULE No S856

1. Description of Pattern **approved on 15/08/24**

A Soulbook Model MetaPOS system to provide certain additional facilities for transactions when interfaced to compatible (#) NMI-approved measuring instruments granted with reference to document NMI M7.

1.1 Key Features

- The system provides point of sale arrangements for a CAS model PD-15BD self-indicating non-automatic weighing instrument (approval NMI 6/4C/322) or other compatible (#) NMI-approved measuring instruments.
 - The system receives measurement data from the output interface of the approved measuring instrument and computes prices using a product look up (PLU) facility.
 - The system computes total price for multiple items including non-measured items and is approved for use for transactions direct to the public.
 - The POS controllers may be connected in a network to share common PLU data, for totalisation, and to accumulate and retrieve management information.
- (#) 'Compatible' is defined to mean that no additions/changes to the hardware/software specified in this approval are required for satisfactory operation of the system.

Note: The POS system is not able to apply a preset tare value and manually enter a measurement data.

1.2 System Description

The Soulbook Model MetaPOS point of sale (POS) system (Figure 1) comprises:

(i) POS Controller

The Soulbook Model MetaPOS POS controller comprises an imin D4-504 model I20D01 or equivalent (*) PC-based device that operates an Android-based operating system running MetaPOS version 2.x.x software. The software version number is displayed on the bottom of the settings screen.

(ii) Electronic Indications

Indications shall satisfy the requirements of document NMI M7, *Pattern Approval Specifications for Point of Sale Systems*.

The imin D4-504 model I20D01 POS controller has an integral touch sensitive display to provide an indication for the operator (Figure 2) and another integral display to provide an indication for the customer (Figure 3).

Information additional to that required by document NMI M7, including totalisation details and product images, may also be indicated.

(iii) Printing Devices

Transaction records shall satisfy the requirements of document NMI M7, *Pattern Approval Specifications for Point of Sale Systems*.

The imin D4-504 model I20D01 POS controller has an integral printer or any equivalent (*) connected separately to the POS controller to provide transaction record printing facility. A typical record is shown in (Figure 4).

(*) 'Equivalent' is defined to mean other proprietary equipment of the same or better specifications requiring no changes to the software specified in this approval for satisfactory operation of the system.

(iv) Additional System Facilities

In addition, the system may include other facilities including point of sale cash drawers, magnetic card and/or barcode reader and electronic funds transfer (EFT), etc. The facilities shall not interact with the system in a way that would cause an incorrect indication of the measured quantity or price.

1.3 Verification Provision

Provision is made for the application of a verification mark.

1.4 Descriptive Markings

The POS controller is marked in a clear and permanent manner, in one location, with the following information:

- Submittor's name or mark
- Serial number or other unique identifier
- Pattern approval number NMI S856

TEST PROCEDURE No S856

The POS system shall be tested in addition to any tests specified in the approval documentation for the measuring instrument/s to which the POS system is connected, as appropriate

The POS system shall be tested in the normal operational mode of the instrument and device, not in 'training mode' or any other management mode.

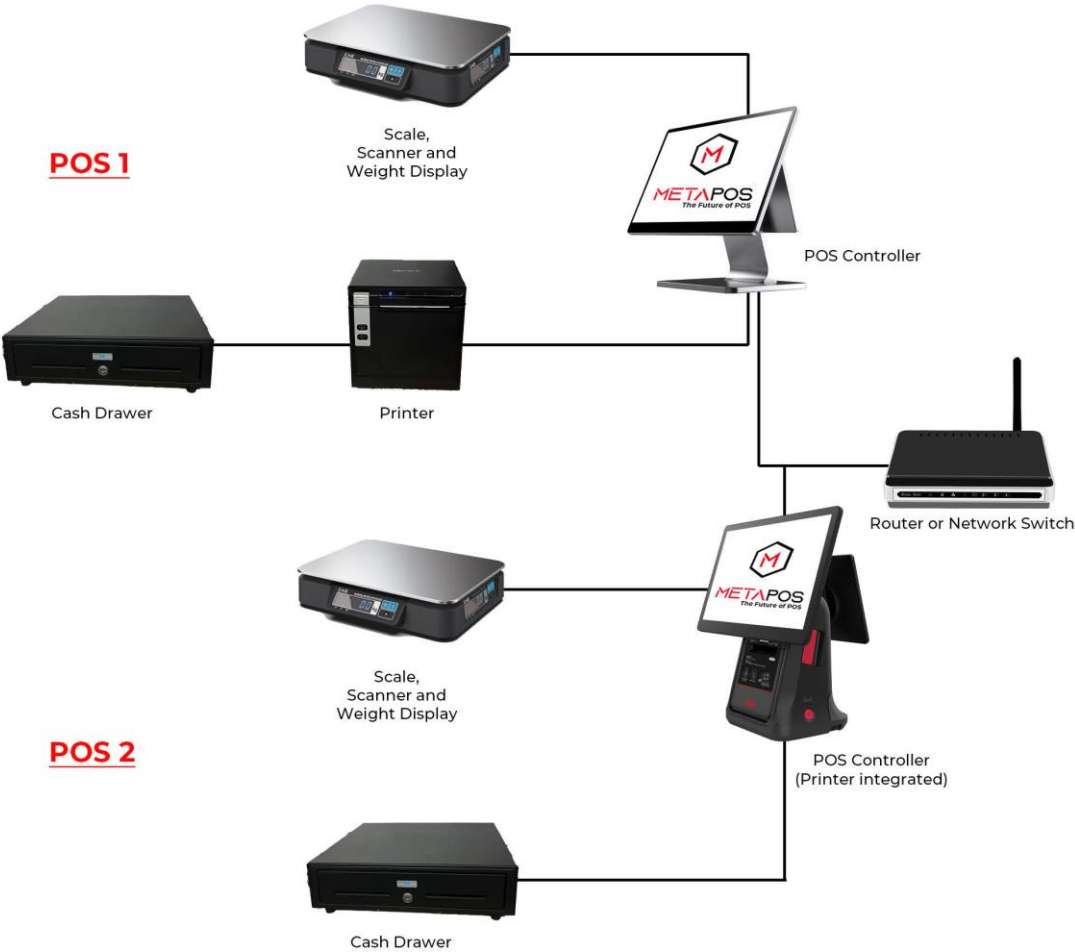
Maximum Permissible Error

The maximum permissible error for price computation is ± 0.5 cent.

TESTS

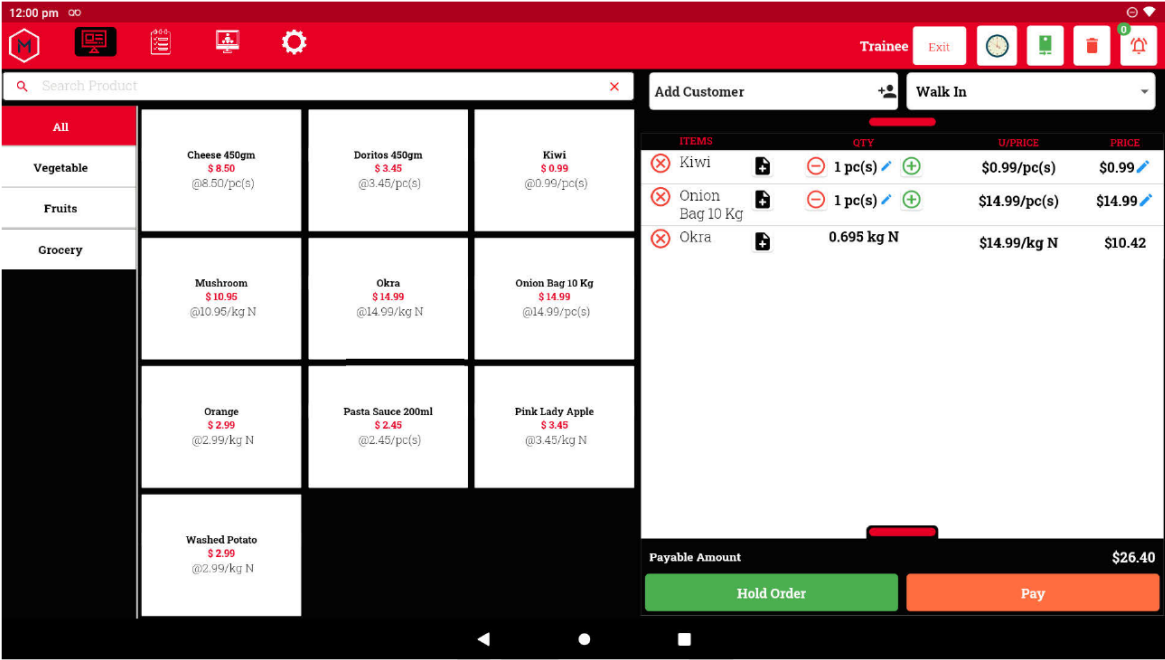
1. Check the software version number/s.
2. Check that the POS system faithfully reproduces the measurement data in the same units and scale interval as the connected approved measuring instrument, e.g. test by using a PLU without a stored tare.
3. Check that the system performs correct price computation, and computes and indicates a correct unrounded subtotal. For cash payment methods, check that any rounding calculation is correct.
4. For network systems check to ensure that the measurement data printed on the transaction record is correctly reproduced.
5. Ensure that electronic indications and printed information are in accordance with document NMI M 7.

FIGURE S856 – 1



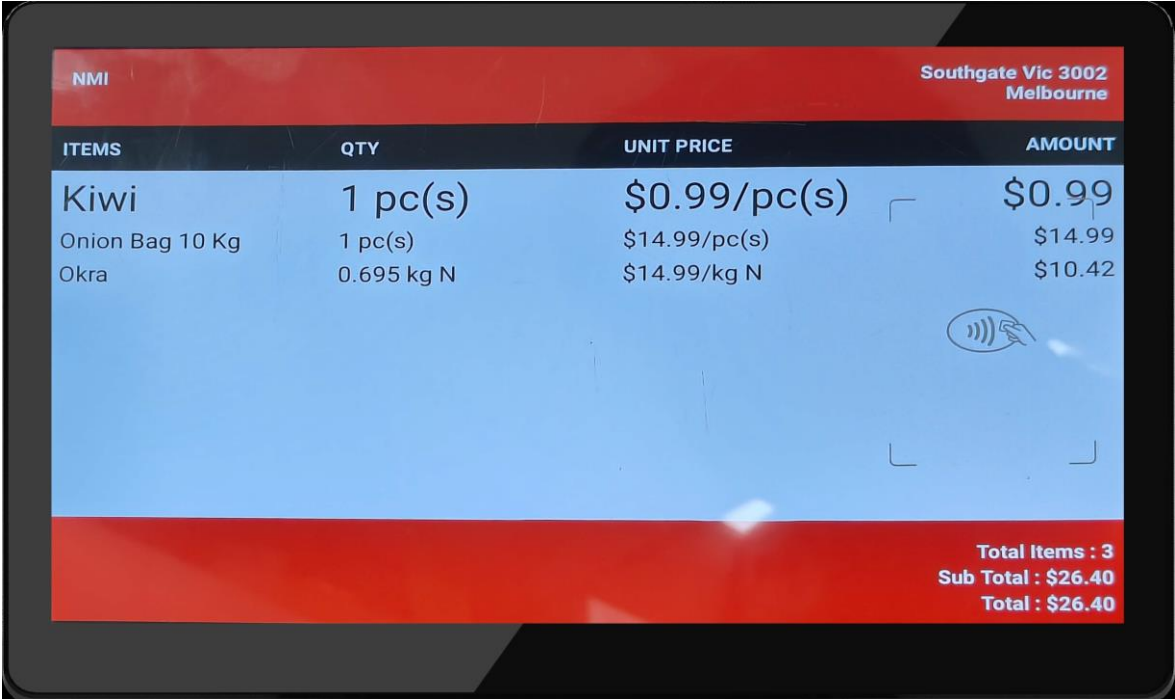
Point of Sale (POS) System

FIGURE S856 – 2



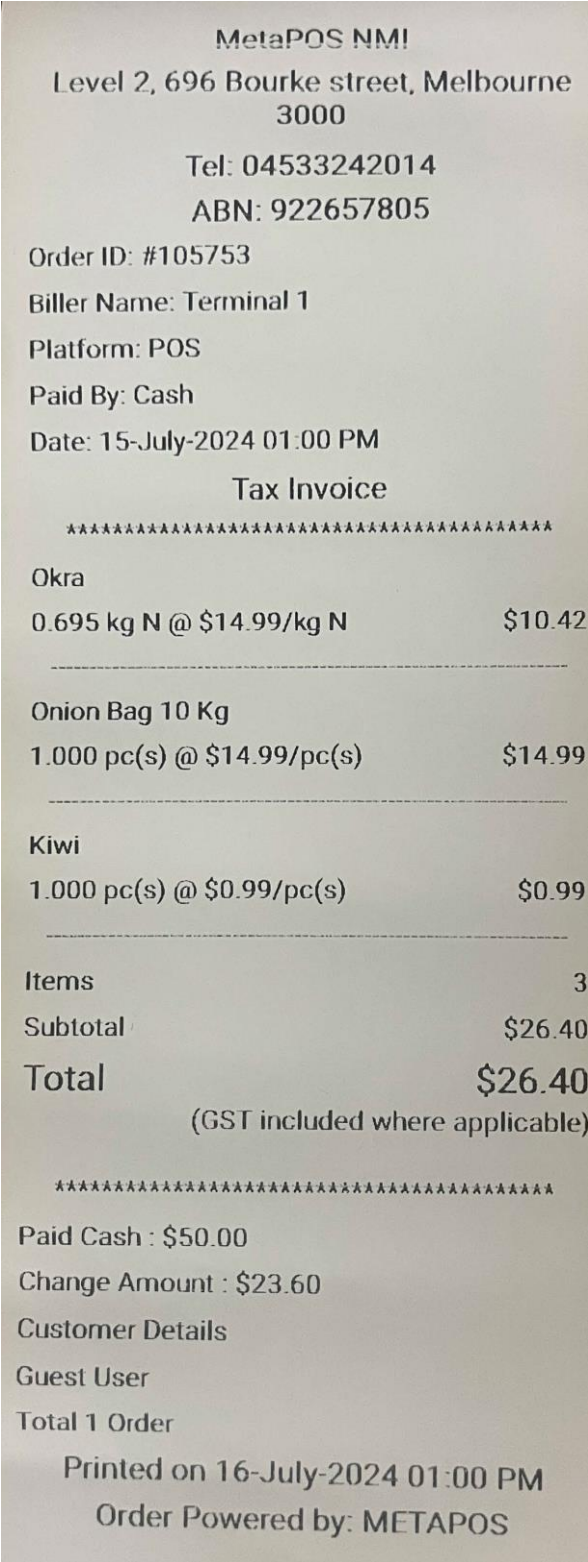
Typical Operator Display

FIGURE S856 – 3



Typical Customer Display

FIGURE S856 – 4



A Typical Receipt

~ End of Document ~