



CANCELLED

R C
cert. no. 0/3
31-12-90

5/6A/80
24/10/85

NATIONAL STANDARDS COMMISSION

NATIONAL MEASUREMENT (PATTERNS OF INSTRUMENTS) REGULATIONS

REGULATION 9

CERTIFICATE OF APPROVAL No 5/6A/80

This is to certify that an approval has been granted that the pattern and variant of the

Gilbarco T090/605 Series Driveway Flowmeters

submitted by Gilbarco Aust. Ltd
12-38 Talavera Road
North Ryde NSW 2113

are suitable for use for trade.

CONDITIONS OF APPROVAL

General:

This approval is subject to review on or after 1/4/90.

Instruments purporting to comply with this approval shall be marked NSC No 5/6A/80.

This approval may be withdrawn if instruments are constructed and used other than as described in the drawings and specifications lodged with the Commission.

Special:

Any auxiliary devices used with this instrument shall comply with the requirements of General Supplementary Certificate No S1/0.

Signed

JW Executive Director

Descriptive Advice

Pattern: approved 11/3/85

. Gilbarco T090/605 series single driveway flowmeters.

Variant: approved 11/3/85

1. Gilbarco T091/605 series dual driveway flowmeters.

Technical Schedule No 5/6A/80 describes the pattern and variant 1.

Filing Advice

The documentation for this approval comprises:

Certificate of Approval No 5/6A/80 dated 24/10/85
Technical Schedule No 5/6A/80 (including Table 1) dated 24/10/85
Test Procedure No 5/6A/80 dated 24/10/85
Figures 1 to 9 dated 24/10/85



NATIONAL STANDARDS COMMISSION

TECHNICAL SCHEDULE No 5/6A/80

Pattern: Gilbarco T090/605 Series Driveway Flowmeters

Submittor: Gilbarco Aust. Ltd
12-38 Talavera Road
North Ryde NSW 2113

1. Description of Pattern

The Gilbarco T090/605 series single driveway flowmeters (Figure 1) are approved for use with maximum and minimum flow rates of 50 L/min and 15 L/min respectively in the models and with the capabilities listed in Table 1.

1.1 Components

The system uses the Wayne 605 series hydraulics incorporating a Wayne 2-piston meter (Figures 2 and 3) with the driveway flowmeter computer, indicator and housing of the Gilbarco T090 single Electroline series.

Dual hydraulic systems (Figure 4) which also use different gas separation, may be used in which case only one set of hydraulics is used so that the flowmeter then operates as a single dispenser.

When used with products other than petrol a gas detector valve is fitted (Figure 6).

When fitted with a preset panel the instrument is fitted with a flow control facility for correct termination of preset deliveries.

Figures 5 to 8 show typical hydraulic arrangements. The system may also include a Gilbarco T11 or T11-5 control console (Figure 9).

1.2 Markings

The instrument is marked with the following data, together in one location:

Manufacturer's name or mark	
Model number	
Serial number	
NSC approval number	5/6A/80
Maximum flow rate L/min
Minimum flow rate L/min
Approved for use with (product)	

1.3 Sealing and Verification Provision

Provision is made for the application of a verification mark.

The meter calibration is sealed.

2. Description of Variant 1

Gilbarco T091/605 dual Electroline series driveway flowmeters (Figure 4 and Table 1).

TABLE 1

Singles with Single Hydraulics

Model No.	Hydraulic Diagram	Petrol	Diesel Fuel	Preset	Stand-alone	T11 or T11-5 Console
T090 PS605	Fig. 5	Yes	-	-	Yes	-
T090 BS605	Fig. 5	Yes	-	-	-	Yes
T090 RS605	Fig. 6	-	Yes	-	Yes	-
T090 TS605	Fig. 6	-	Yes	-	-	Yes

Singles with Dual Hydraulics

T090 AD605	Fig. 7	Yes	-	Yes	-	Yes
T090 BD605	Fig. 8	Yes	-	-	-	Yes
T090 ND605	Fig. 7	Yes	-	Yes	Yes	-
T090 PD605	Fig. 8	Yes	-	-	Yes	-

Duals with Dual Hydraulics

T091 AD605	Fig. 7	Yes	-	Yes	-	Yes
T091 BD605	Fig. 8	Yes	-	-	-	Yes
T091 MD605	Fig. 7	Yes	-	Yes	Yes	-
T091 ND605	Fig. 8	Yes	-	-	Yes	-

Driveway Flowmeter Models and Capabilities

5/6A/80
24/10/85

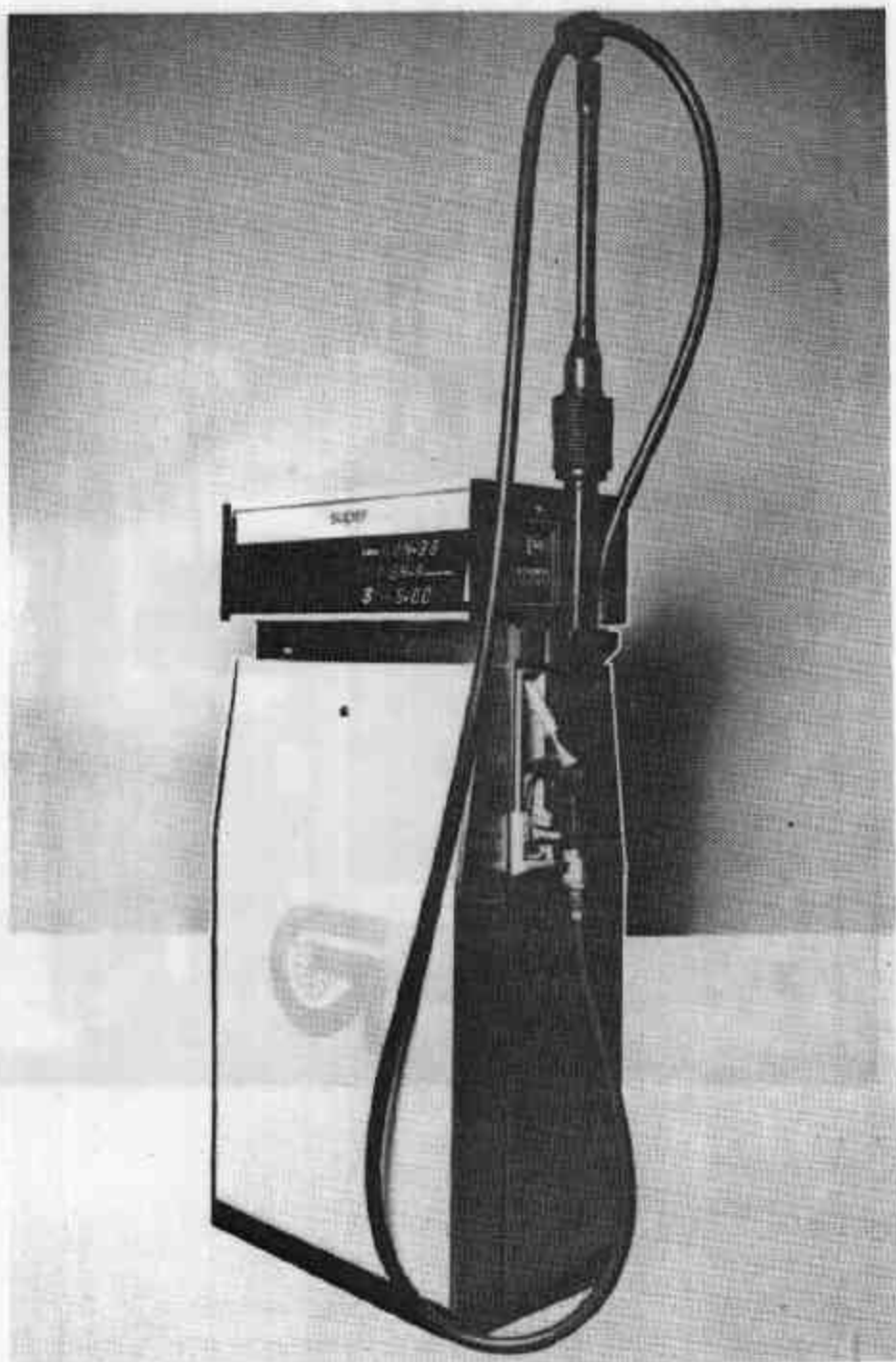
TEST PROCEDURE No 5/6A/80

The maximum permissible errors at verification are given in Document 118.

1. Carry out at least five test deliveries by comparing the volume indication of the instrument with the actual volume delivered.
2. The hose dilation and the anti-drain valve of a nozzle are checked when the pump is stopped and the trigger of the nozzle is depressed; the measured volume of the product shall not exceed 50 mL.

5/6A/80
24/10/85

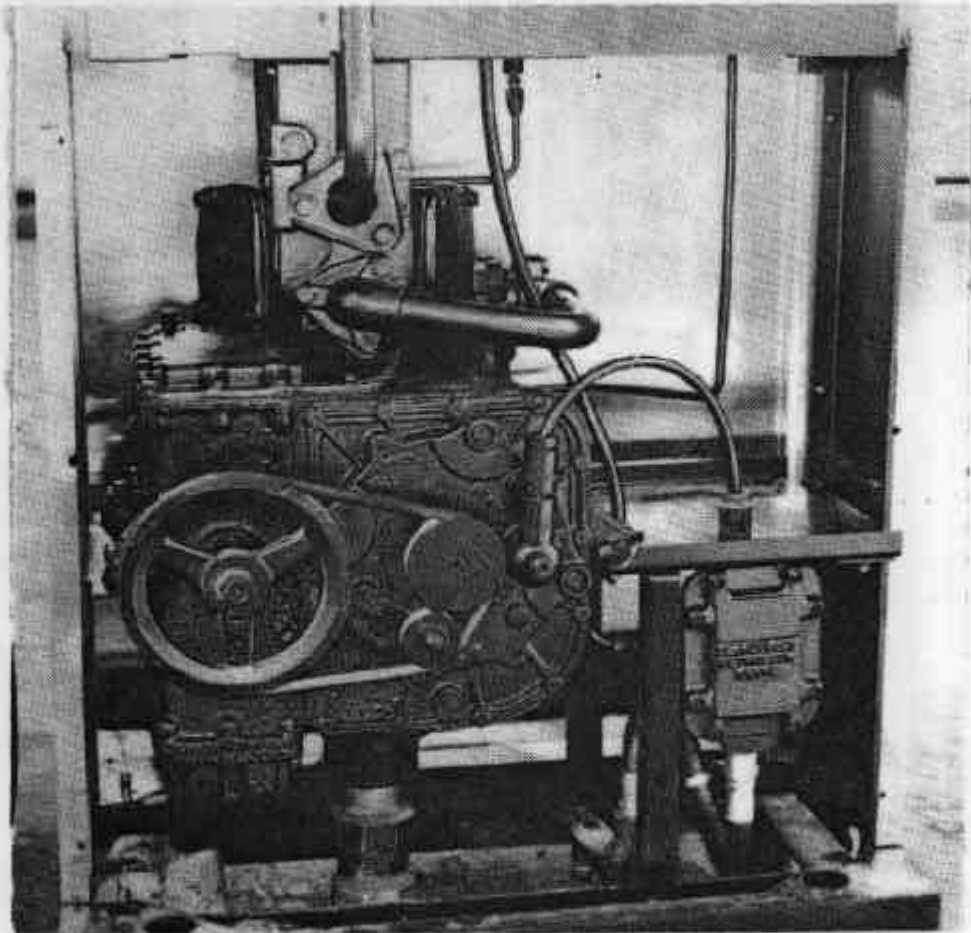
FIGURE 5/6A/80 - 1



Gilbarco T090/605 Series Driveway Flowmeter

5/6A/80
24/10/85

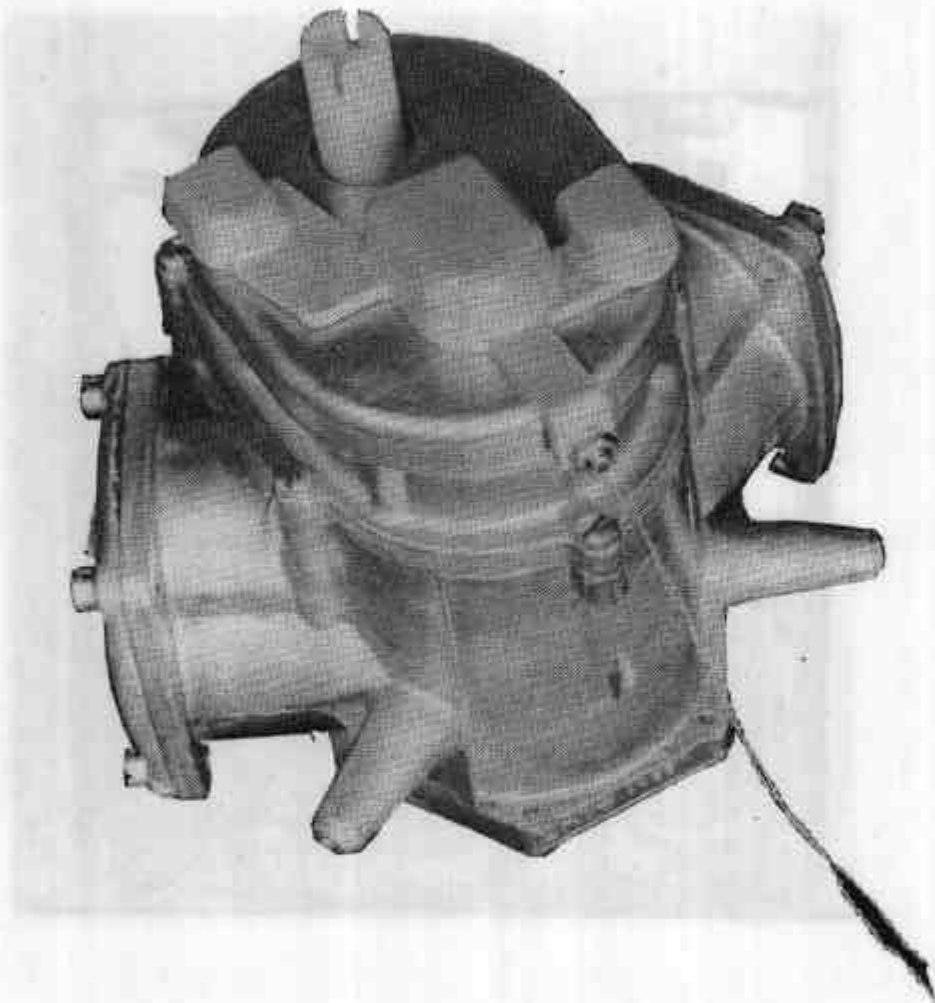
FIGURE 5/6A/80 - 2



Showing Single Hydraulics

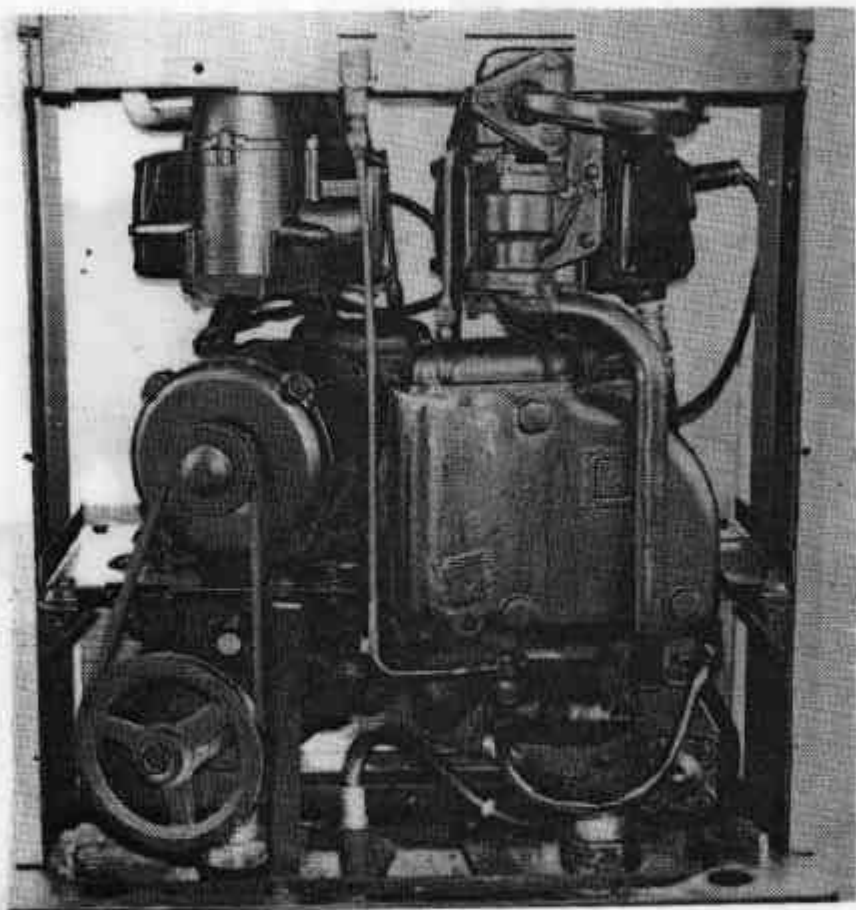
5/6A/80
24/10/85

FIGURE 5/6A/80 - 3



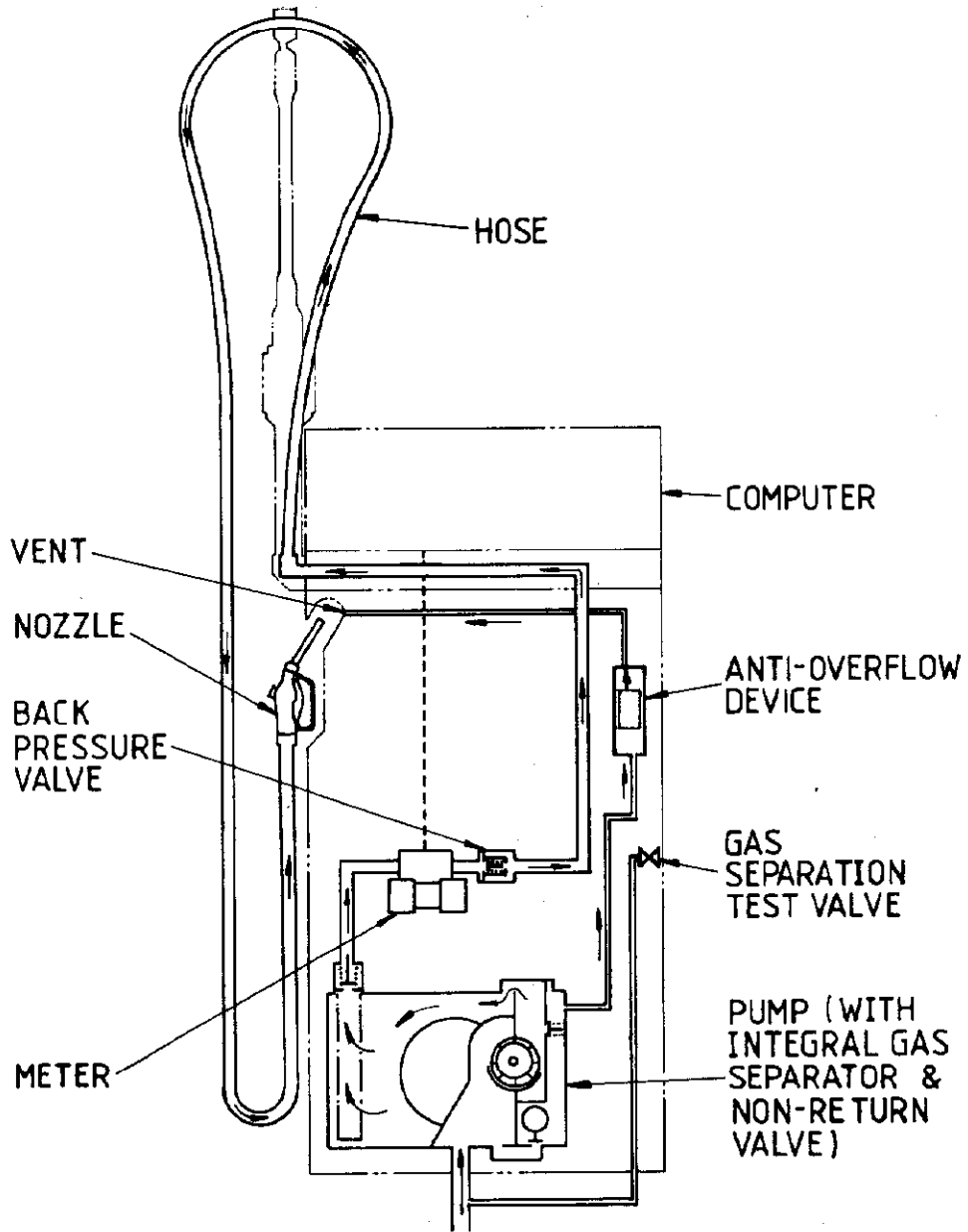
Wayne 2-piston Meter

FIGURE 5/6A/80 - 4



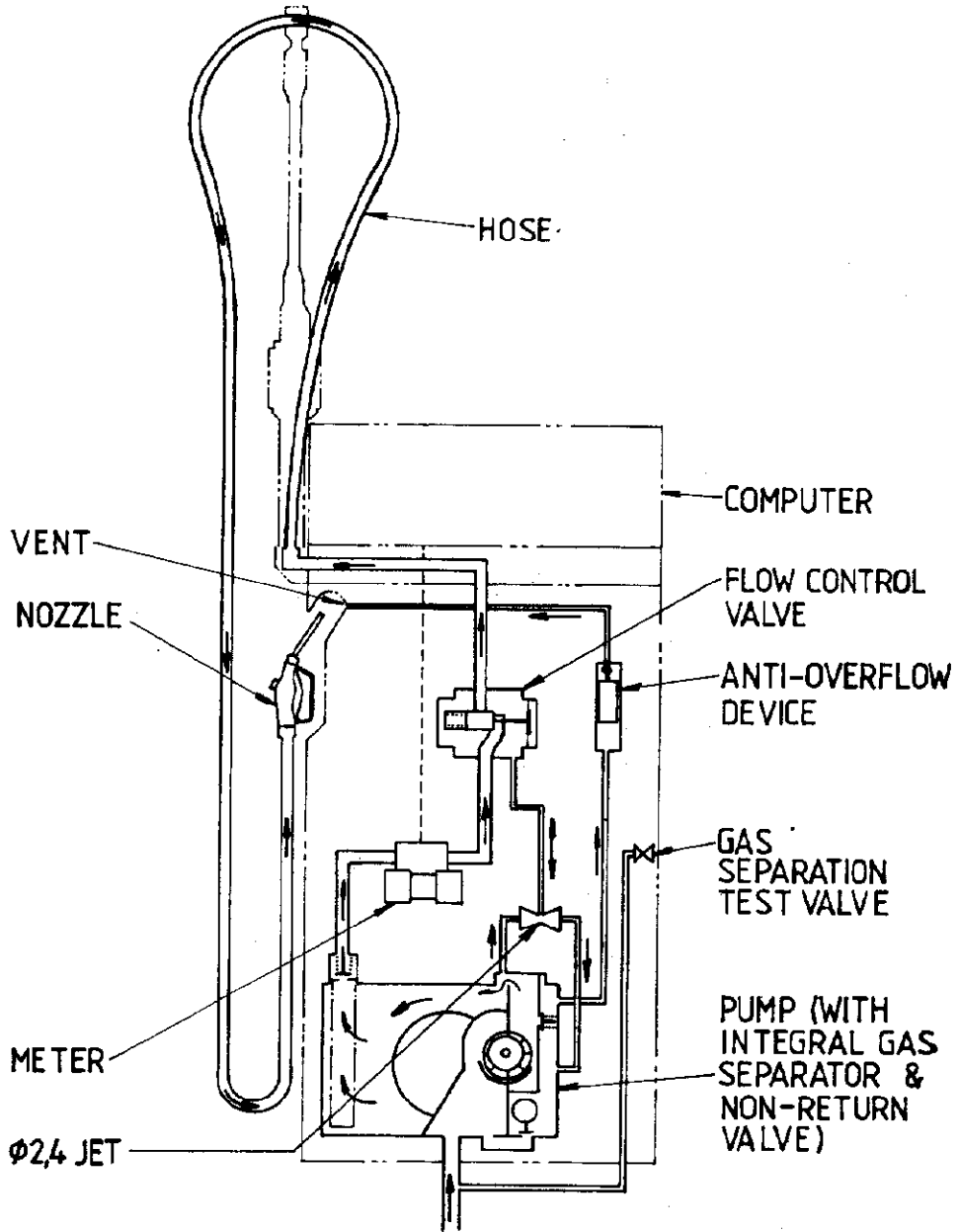
Showing Dual Hydraulics

FIGURE 5/6A/80 - 5



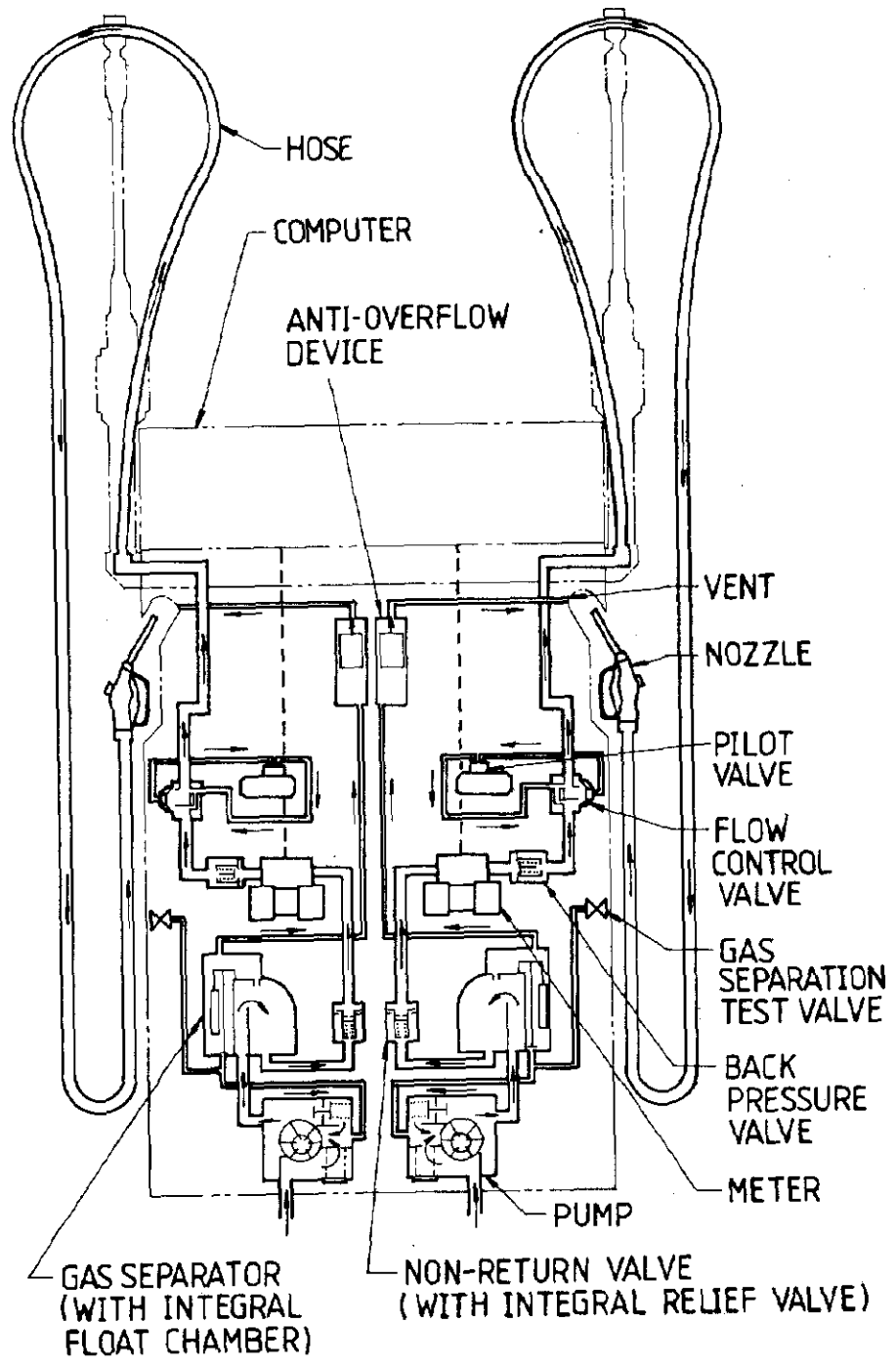
Hydraulic Diagram A - Refer Table 1

FIGURE 5/6A/80 - 6



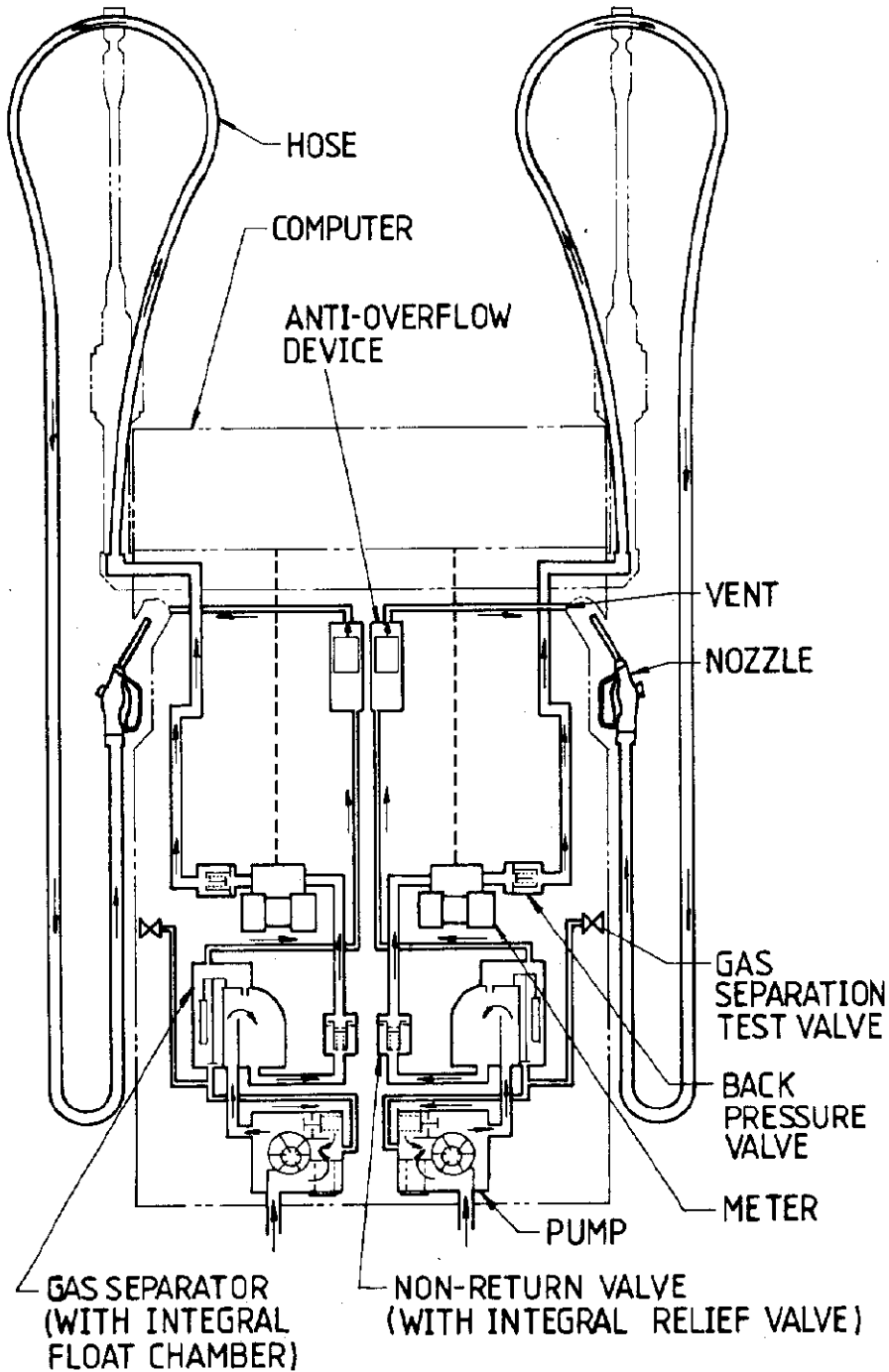
Hydraulic Diagram B - Refer Table 1

FIGURE 5/6A/80 - 7



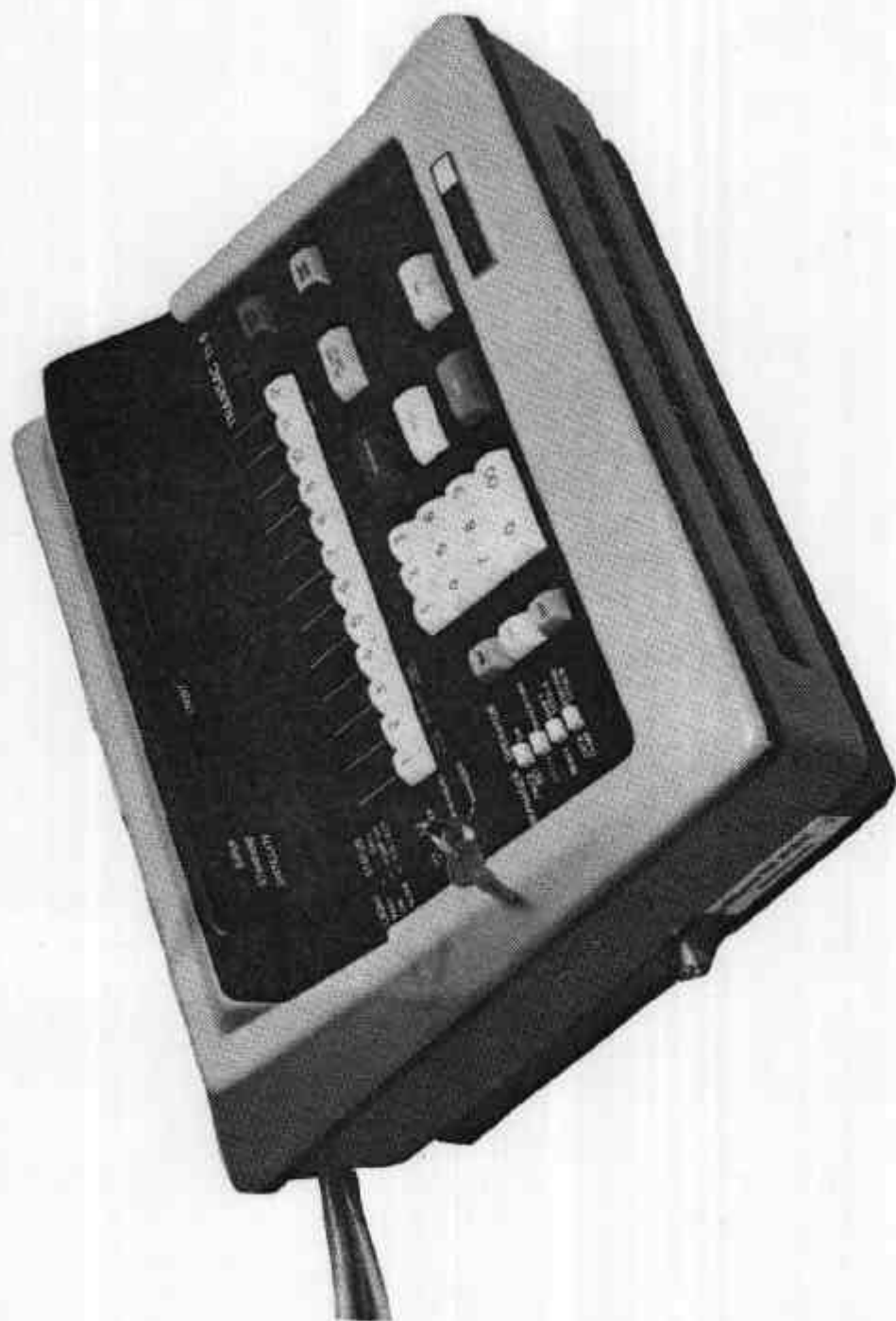
Hydraulic Diagram C - Refer Table 1

FIGURE 5/6A/80 - 8



Hydraulic Diagram D - Refer Table 1

FIGURE 5/6A/80 - 9



T11-5 Console