



National Standards Commission
Cancellation
Certificate of Approval No 6/10B/46A

This is to certify that the approval for use for trade granted in respect of the

Toledo Model 7560 Weighing Instrument

submitted by Mettler Toledo Limited
525 Graham Street
Port Melbourne VIC 3207

has been cancelled in respect of new instruments as from 1 April 2000.

Instruments which were verified/certified before that date may, with the concurrence of the relevant verifying authority, be submitted for reverification.

Signed and sealed by a person authorised under Regulation 63 of the National Measurement Regulations 1999 to exercise the powers and functions of the Commission under this Regulation.

A handwritten signature in black ink, appearing to read 'J. Burt', is written in a cursive style.

National Standards Commission



Certificate of Approval

No 6/10B/46A

Issued under Regulation 9
of the
National Measurement (Patterns of Measuring Instruments) Regulations

This is to certify that an approval for use for trade has been granted in respect of
the

Toledo Model 7560 Weighing Instrument

submitted by Toledo Scale (Australia) Ltd
525 Graham Street
Port Melbourne VIC 3207.

This Certificate is issued upon completion of reviews of NSC approvals
Nos 6/9C/87 and 6/10B/46.

Signed and sealed by a person authorised
under Regulation 9 of the National
Measurement (Patterns of Measuring
Instruments) Regulations to exercise the
powers and functions of the Commission
under this Regulation.

A handwritten signature in black ink, appearing to read 'J. Birch'. The signature is written in a cursive style with a large initial 'J'.

CONDITIONS OF APPROVAL

This approval is subject to review on or after 1/3/97.
This approval expires in respect of new instruments on 1/3/98.

Instruments purporting to comply with this approval shall be marked NSC No 6/10B/46A and only by persons authorised by the submittor.

It is the submittor's responsibility to ensure that all instruments marked with this approval number are constructed as described in the documentation lodged with the Commission and with the relevant Certificate of Approval and Technical Schedule. Failure to comply with this Condition may attract penalties under Section 19B of the National Measurement Act and may result in cancellation or withdrawal of the approval, in accordance with the Commission's Document 106.

Auxiliary devices used with this instrument shall comply with the requirements of General Supplementary Certificate No S1/0.

The values of the performance criteria (maximum number of scale intervals etc.) applicable to an instrument incorporating the pattern approved herein shall be within the limits specified herein and in any approval documentation for the other components.

The Commission reserves the right to examine any instrument or component of an instrument purporting to comply with this approval.

The pattern as approved herein or with substitute load cells and/or indicator, and in other capacities and configurations, shall comply with General Certificate No 6B/0.

DESCRIPTIVE ADVICE

Pattern: approved 6/2/92

- . An Toledo model 7560 self-indicating weighing instrument of 60 000 kg maximum capacity.

Variant: approved 6/2/92

1. Of 175 000 kg maximum capacity.

Variants: approved 5/3/92

2. Various models of the 7000 series.
3. With a hopper or tank-type load receptor.

Technical Schedule No 6/10B/46A describes the pattern and variants 1 to 3.

FILING ADVICE

The documentation for this approval comprises.

Certificate of Approval No 6/10B/46A dated 23/3/92
Technical Schedule No 6/10B/46A dated 23/3/92 (incl. Test Procedure)
Figures 1 to 3 dated 23/3/92



National Standards Commission

TECHNICAL SCHEDULE No 6/10B/46A

Pattern: Toledo Model 7560 Weighing Instrument.

Submittor: Toledo Scale (Australia) Ltd
525 Graham Street
Port Melbourne VIC 3207.

1. Description of Pattern

An Toledo model 7560 self-indicating weighing instrument of 60 000 kg maximum capacity and approved for use with up to 3000 verification scale intervals.

1.1 Basework

The model 7560 basework has the platform directly supported by 8 load cells.

1.2 Load Cells

Toledo model 0760 ('Digitol') load cells of 22 7000 kg capacity (Figure 1) are used, mounted as described in the documentation of NSC approval No S252.

1.3 Indicator

A Toledo model 8530 digital indicator is used as described in the documentation of NSC approval No S253. The indicator may be used in single or multi-interval configuration. (refer Conditions of Approval)

1.4 Markings

Instruments are marked with the following data, in a clearly visible location:

Manufacturer's name or mark		
Serial number		
NSC approval numbers	- instrument	NSC No 6/10B/46A
	- load cells	NSC No S
	- indicator	NSC No S
Accuracy class		III
Maximum capacity		Max kg *
Minimum capacity		Min kg *
Verification scale interval		e = d = kg *
Maximum subtractive tare		T = kg

* Repeated adjacent to each reading face, if not already in that vicinity.

1.5 Verification/Certification Provision

Provision is made for a verification/certification mark to be applied.

2. Description of Variants

2.1 Variant 1

Of 175 000 kg maximum capacity using 12 Toledo model 0760 ('Digitol') load cells of 45 000 kg capacity, mounted as described in the documentation of NSC approval No S252. The load cells are fitted in pairs as shown in Figure 2.

2.2 Variant 2

Various models of the 7000 series.

2.3 Variant 3

Other models with a hopper or tank-type load receptor (Figure 3) of 60 000 kg maximum capacity and approved for use with up to 3000 verification scale intervals.

TEST PROCEDURE

Instruments should be tested in conjunction with any tests specified in the approval documentation for the indicator used, and in accordance with any relevant tests specified in the Inspector's Handbook.

Maximum Permissible Errors at Verification/Certification

The maximum permissible errors for increasing and decreasing loads, expressed in terms of verification scale interval (e), with the instrument adjusted to zero within $\pm 0.25e$ at no load, are:

- $\pm 0.5e$ for loads from 0 to $500e$;
- $\pm 1.0e$ for loads over $500e$ up to $2000e$; and
- $\pm 1.5e$ for loads over $2000e$.



National Standards Commission

Notification of Change

Certificate of Approval No 6/10B/46A

Change No 1

The following change is made to the approval documentation for the

Toledo Model 7560 Weighing Instrument

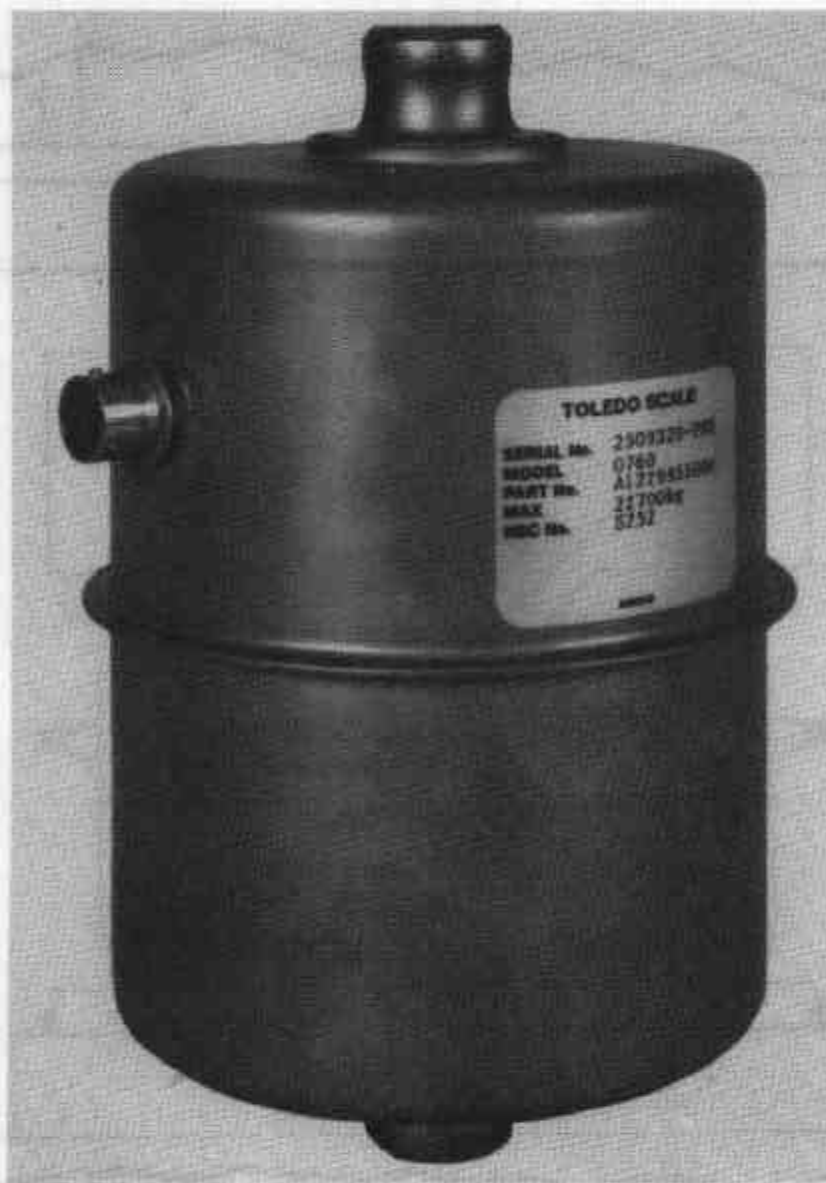
submitted by Mettler Toledo Limited
(formerly Toledo Scale (Australia) Ltd)
525 Graham Street
Port Melbourne VIC 3207.

In Certificate of Approval No 6/10B/46A dated 23 March 1992, the Condition of Approval referring to the expiry of the approval should be deleted.

Signed and sealed by a person authorised under Regulation 9 of the National Measurement (Patterns of Measuring Instruments) Regulations to exercise the powers and functions of the Commission under this Regulation.

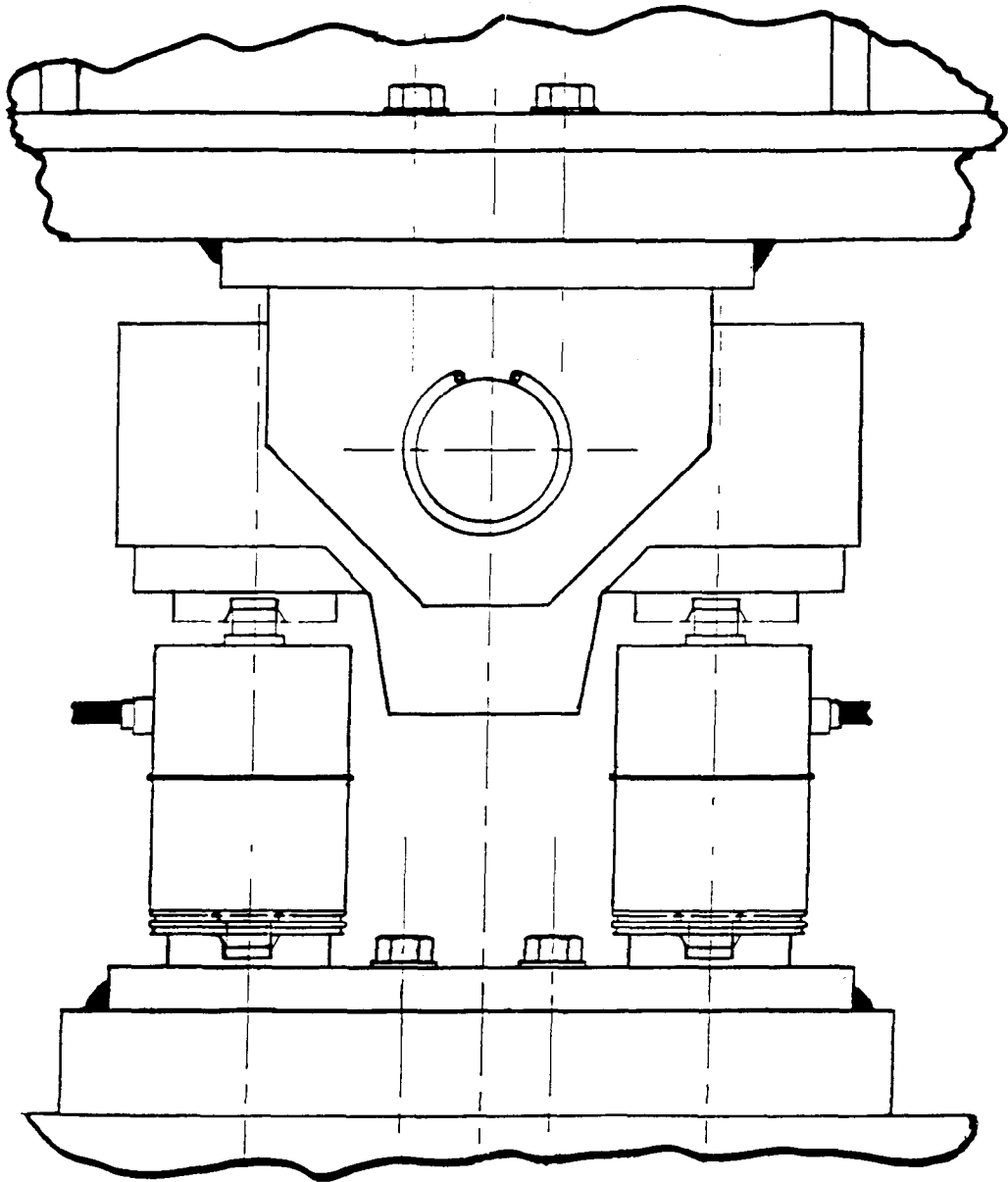
A handwritten signature in black ink, appearing to read 'J. Burt'. The signature is written in a cursive style with a large initial 'J' and a long, sweeping underline.

FIGURE 6/10B/46A - 1



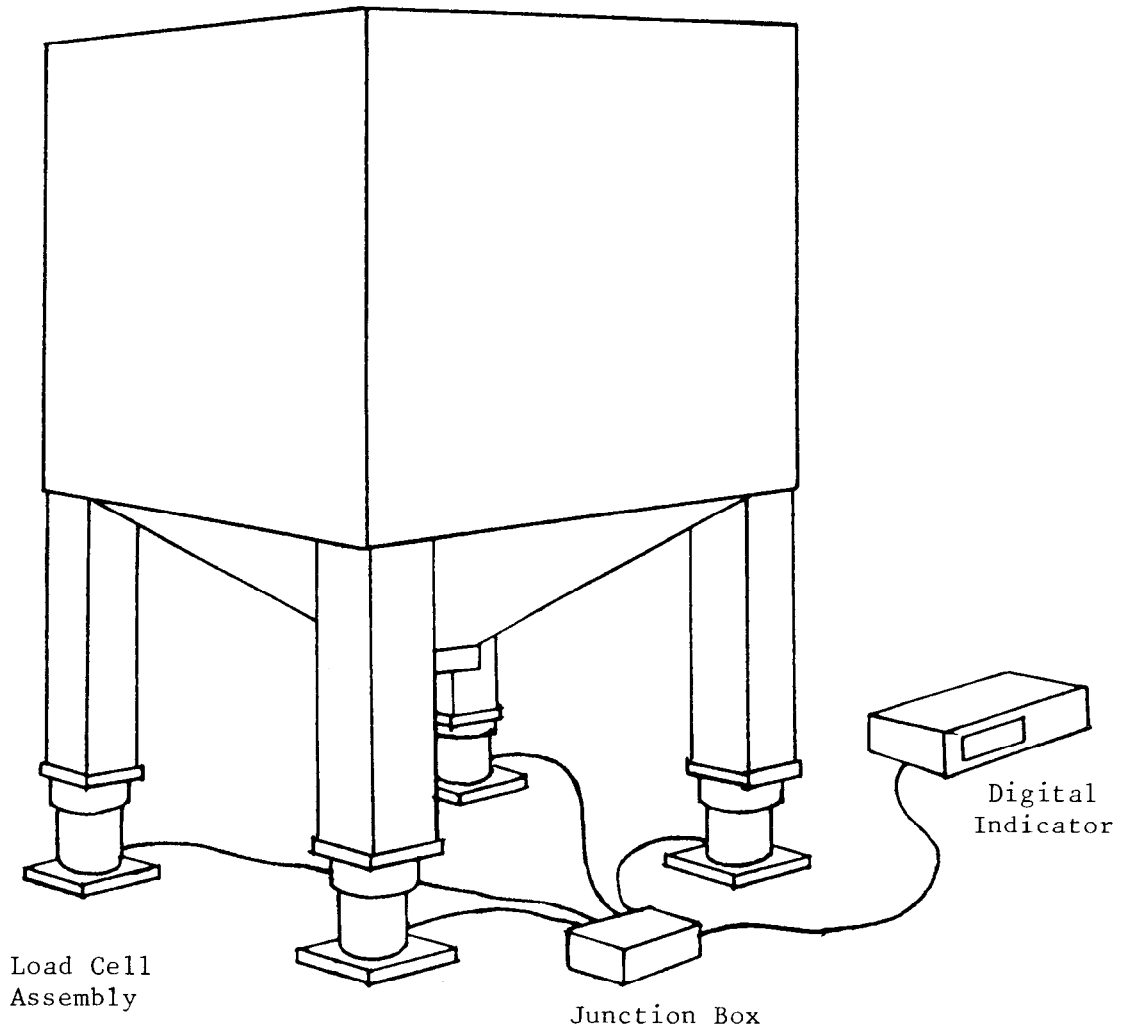
Toledo Model 0760 ('Digital') Load Cell

FIGURE 6/10B/46A - 2



Showing Double Load Cell Mounting

FIGURE 6/10B/46A - 3



Typical Hopper Weighing Instrument