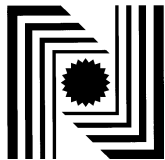
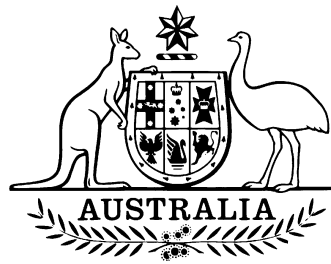


6/9C/217A
10 December 2001



National Standards Commission

12 Lyonpark Road, North Ryde NSW

Cancellation Certificate of Approval

No 6/9C/217A

Issued under Regulation 60
of the
National Measurement Regulations 1999

This is to certify that the approval for use for trade granted in respect of the

Ultra Model 7600/15 Weighing Instrument

submitted by Ultra Scales Pty Ltd
33-35 Judge Street
Sunshine VIC 3020

has been cancelled in respect of new instruments as from 1 January 2002.

Signed by a person authorised under Regulation 60
of the National Measurement Regulations 1999 to
exercise the powers and functions of the Commission
under this Regulation.



National Standards Commission



Certificate of Approval

No 6/9C/217A

Issued under Regulation 9
of the
National Measurement (Patterns of Measuring Instruments) Regulations

This is to certify that an approval for use for trade has been granted in respect of the

Ultra Model 7600/15 Weighing Instrument

submitted by Ultra Scales Pty Ltd
33-35 Judge Street
Sunshine VIC 3020.

NOTE: This Certificate relates to the suitability of the pattern of the instrument for use for trade only in respect of its metrological characteristics. This Certificate does not constitute or imply any guarantee of compliance by the manufacturer or any other person with any requirements regarding safety.

This Certificate is issued upon completion of a review of NSC approval No 6/9C/217.

CONDITIONS OF APPROVAL

This approval is subject to review on or after 1 September 2000.
This approval expires in respect of new instruments on 1 September 2001.

Instruments purporting to comply with this approval shall be marked NSC No 6/9C/217A and only by persons authorised by the submittor.

It is the submittor's responsibility to ensure that all instruments marked with this approval number are constructed as described in the documentation lodged with the Commission and with the relevant Certificate of Approval and Technical Schedule. Failure to comply with this Condition may attract penalties under Section 19B of the National Measurement Act and may result in cancellation or withdrawal of the approval, in accordance with the Commission's Document 106.

The values of the performance criteria (maximum number of scale intervals etc.) applicable to the instrument shall be within the limits specified herein and in any approval documentation for the components where they are approved separately.

The Commission reserves the right to examine any instrument or component of an instrument purporting to comply with this approval.

The pattern as approved herein or with substitute load cells and/or indicator, and in other capacities, shall comply with General Certificate No 6B/0.

DESCRIPTIVE ADVICE

Pattern: approved 10 August 1995

An Ultra model 7600/15 weighing instrument of 15 000 kg maximum capacity.

Variants: approved 10 August 1995

1. Of up to 1500 kg maximum capacity.
2. With an alternative load cell mounting.

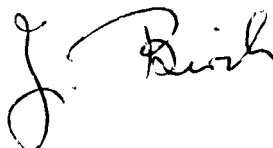
Technical Schedule No 6/9C/217A describes the pattern and variants 1 & 2.

FILING ADVICE

The documentation for this approval comprises:

Certificate of Approval No 6/9C/217A dated 27 November 1995
Technical Schedule No 6/9C/217A dated 27 November 1995 (incl. Test Procedure)
Figures 1 to 5 dated 27 November 1995

Signed and sealed by a person authorised under Regulation 9 of the National Measurement (Patterns of Measuring Instruments) Regulations to exercise the powers and functions of the Commission under this Regulation.





National Standards Commission

TECHNICAL SCHEDULE No 6/9C/217A

Pattern: Ultra Model 7600/15 Weighing Instrument.

Submittor: Ultra Scales Pty Ltd
33-35 Judge Street
Sunshine VIC 3020.

1. Description of Pattern

An Ultra model 7600/15 self-indicating weighing instrument of 15 000 kg maximum capacity and approved for use with up to 3000 verification scale intervals.

1.1 Basework

The model 7600/15 basework (Figures 1 and 2) has the platform directly supported by means of ball-and-cup assemblies on load cells which are mounted on a subframe.

1.2 Load Cells

Four GEC Avery model 8708 load cells of 7000 kg capacity are used as described in the documentation of NSC approval No S176A, and mounted as shown in Figure 2.

1.3 Indicator

A Gedge model GS-1650 Mk3 digital indicator is used. This is also described in the documentation of NSC approval No S193A.

1.4 Markings

Instruments are marked with the following data, together in one location:

Manufacturer's name or mark	
Serial number	
NSC approval numbers	- instrument NSC No 6/9C/217A
	- load cells NSC No S
	- indicator NSC No S
Accuracy class	III
Maximum capacity	Max kg *
Minimum capacity	Min kg *
Verification scale interval	e = kg *

* These are repeated adjacent to each reading face.

1.5 Verification/Certification Provision

Provision is made for a verification/certification mark to be applied.

1.6 Sealing Provision

Provision is made for the calibration adjustments to be sealed.

2. Description of Variants

2.1 Variant 1

With a model 7600 basework of up to 1500 kg maximum capacity approved for use with up to 3000 verification scale intervals.

The model 7600 basework (Figures 1 and 3) has the platform directly supported by means of ball-and-cup assemblies on load cells which are mounted on a subframe.

Four Kelba model KA-1000-C3 load cells of 1000 kg capacity are used as described in the documentation of NSC approval No S155A, and mounted as shown in Figure 3.

2.2 Variant 2

With a modified model 7600/15 or 7600 basework which do not have a baseframe and where the self-aligning supporting feet are fitted directly to the load cells (Figures 4 and 5).

TEST PROCEDURE

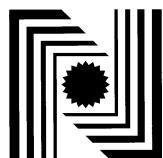
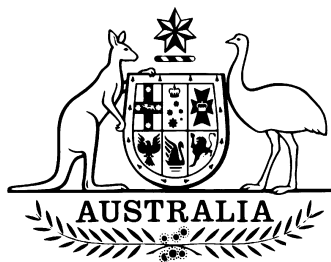
Instruments should be tested in conjunction with any tests specified in the approval documentation for the indicator used, and in accordance with any relevant tests specified in the Inspector's Handbook.

Maximum Permissible Errors at Verification/Certification

The maximum permissible errors for increasing and decreasing loads, expressed in terms of verification scale interval (e), with the instrument adjusted to zero within $\pm 0.25e$ at no load, are:

- $\pm 0.5e$ for loads from 0 to 500e;
- $\pm 1.0e$ for loads over 500e up to 2000e; and
- $\pm 1.5e$ for loads over 2000e.

6/9C/217A
23 August 2001



National Standards Commission

12 Lyonpark Road, North Ryde NSW

Notification of Change

Certificate of Approval No 6/9C/217A

Change No 1

The following change is made to the approval documentation for the

Ultra Model 7600/15 Weighing Instrument

submitted by Ultra Scales Pty Ltd
33-35 Judge Street
Sunshine VIC 3020.

In Certificate of Approval No 6/9C/217A dated 27 November 1995, the Condition of Approval referring to the expiry of the approval should be deleted.

Signed by a person authorised under Regulation 60 of the National Measurement Regulations 1999 to exercise the powers and functions of the Commission under this Regulation.


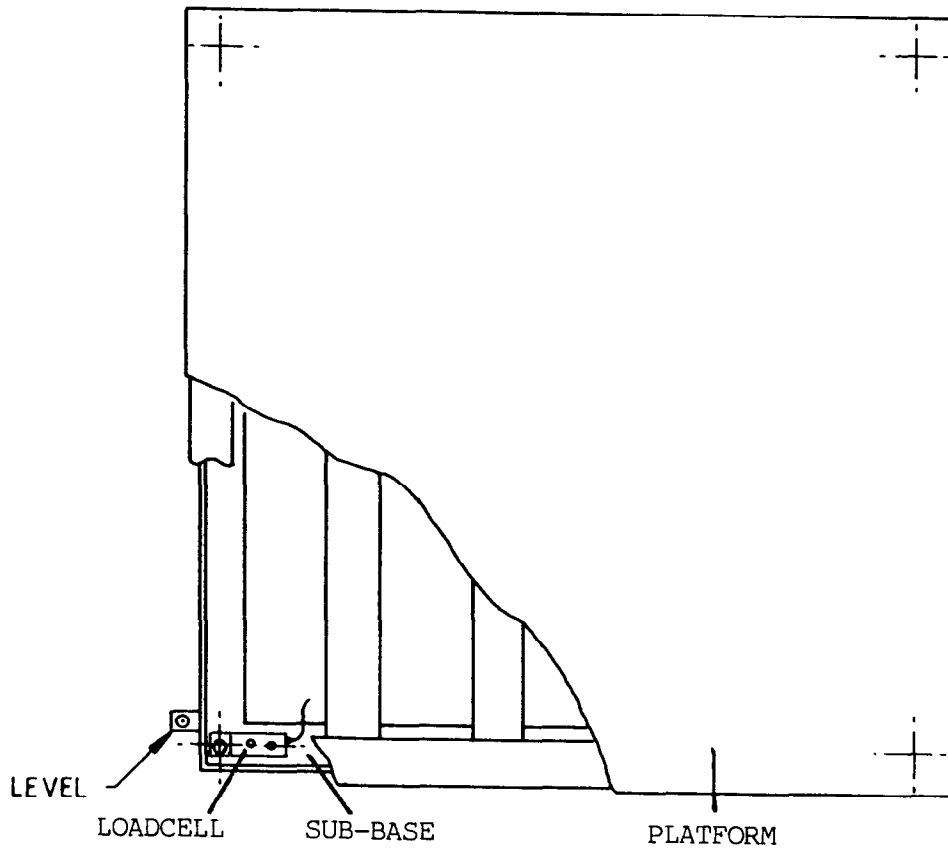
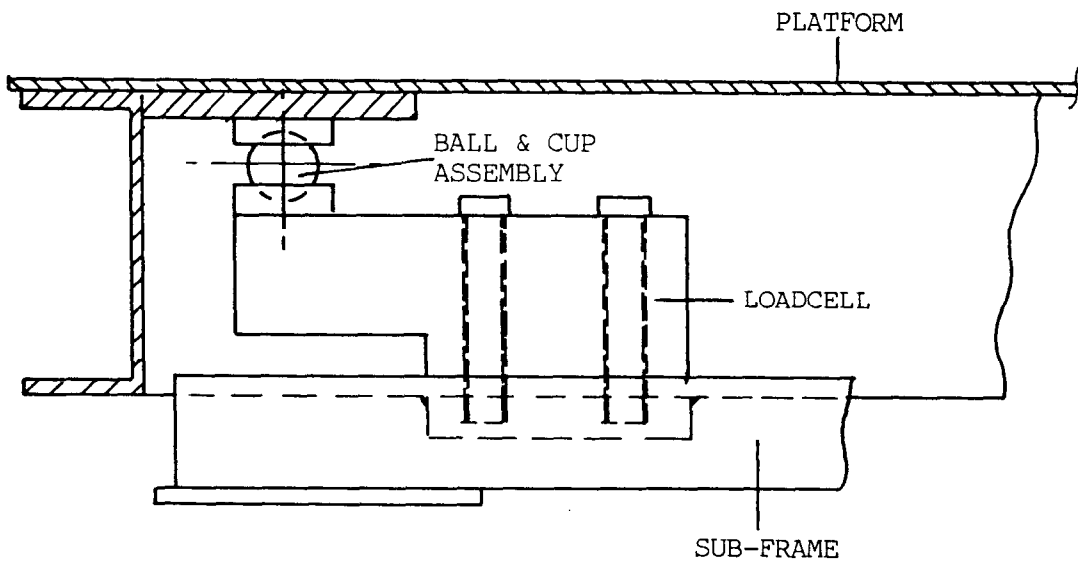


FIGURE 6/9C/217A - 1



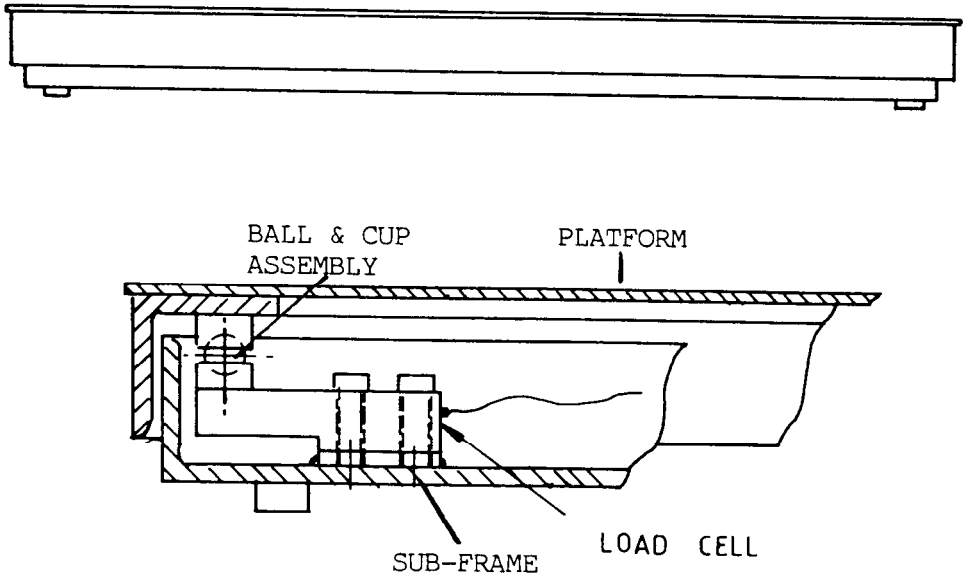
Ultra Model 7600/15 (and 7600) Basework

FIGURE 6/9C/217A - 2



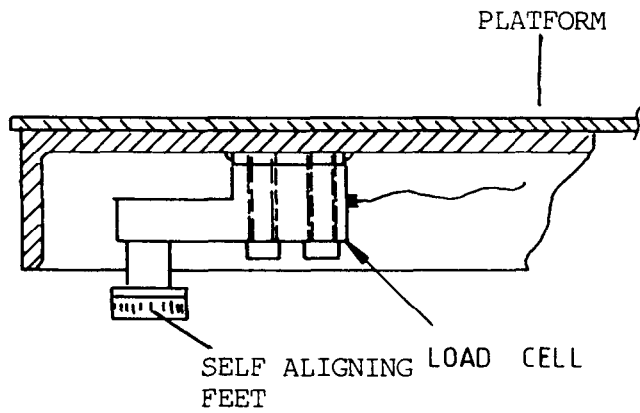
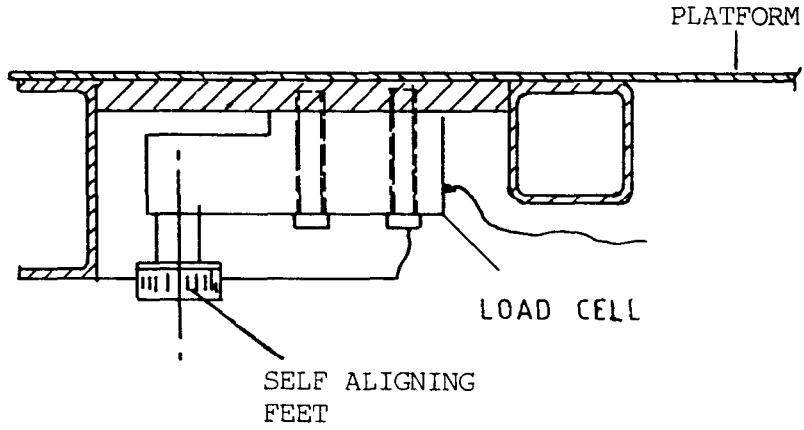
Load Cell Mounting for The Pattern

FIGURE 6/9C/217A - 3



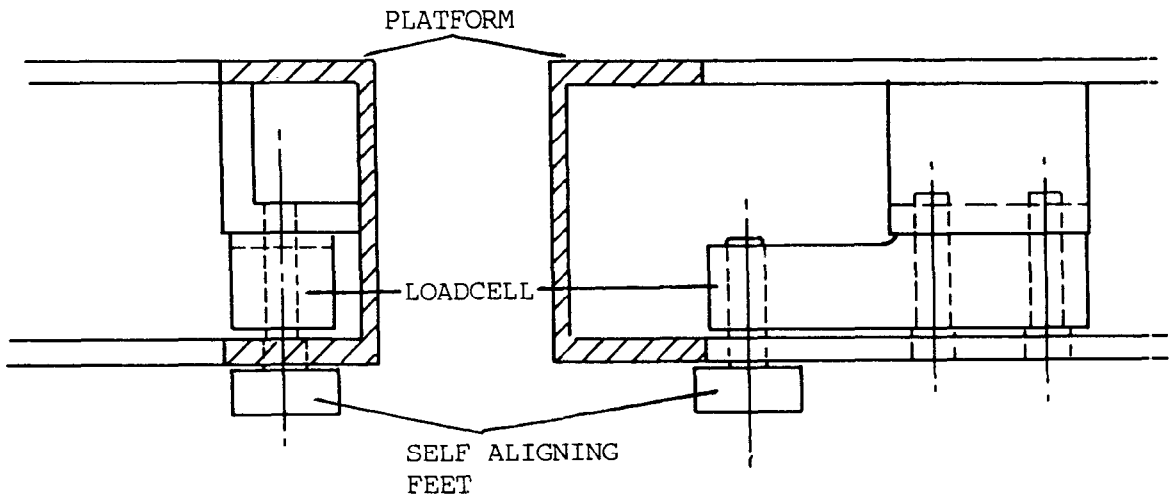
Load Cell Mounting for Variant 1

FIGURE 6/9C/217A - 4



Load Cell Mountings for Variant 2
Model 7600/15 (Upper) and Model 7600 (Lower)

FIGURE 6/9C/217A - 5



Alternative Load Cell Mounting for Variant 2 (Model 7600/15)