



# National Standards Commission

C/- CSIRO NATIONAL STANDARDS LABORATORY UNIVERSITY GROUNDS,  
CITY ROAD, CHIPPENDALE, N.S.W. 2008.

Telephone: 660-0566 - Telegrams & Cables: Natstancom Sydney - Teleprint: AA 20248.

## CERTIFICATE OF APPROVAL No 6/4A/5

This is to certify that the pattern of the

Suprema K15 Weighing Instrument

submitted by

J. W. Wedderburn & Sons Pty Ltd,  
90 Parramatta Road,  
Summer Hill,  
New South Wales, 2130,

CANCELLED

0/1

and described in the drawings and specifications lodged with the Commission and in the Technical Schedule relating to this Certificate, was approved under the Weights and Measures (Patterns of Instruments) Regulations as being suitable for use for trade on 10 December 1973.

The approval of the pattern is subject to review on or after 31 December 1978. Continuance of the approval will depend upon the satisfactory performance of instruments in trade and compliance with the Commission's pattern approval requirements at the date of review.

All instruments conforming to the pattern shall be marked with the approval number "NSC No 6/4A/5".

Signed

A person authorised by the Commission to sign Certificates under the abovementioned Regulations.



# CANCELLED

CONFIDENTIAL  
2/11

## NATIONAL STANDARDS COMMISSION

### TECHNICAL SCHEDULE No 6/4A/5

Pattern: Suprema K15 Weighing Instrument

Submitter: J. W. Wedderburn & Sons Pty Ltd,  
90 Parramatta Road,  
Summer Hill, N.S.W., 2130.

Date of Approval: 10 December 1973

All instruments conforming to this approval shall be marked "NSC 6/4A/5".

#### Description:

1. The pattern (see Figure 1) is of a weighing instrument of capacity 15 kg with, on one or both sides of the instrument, a centre-zero dial which has a maximum capacity of 1 kg and a maximum of 2 graduations per degree over not more than  $50^{\circ}$  deflection. A level indicator is fitted.

The three-lever system basework is illustrated in Figures 2, 3 and 4.

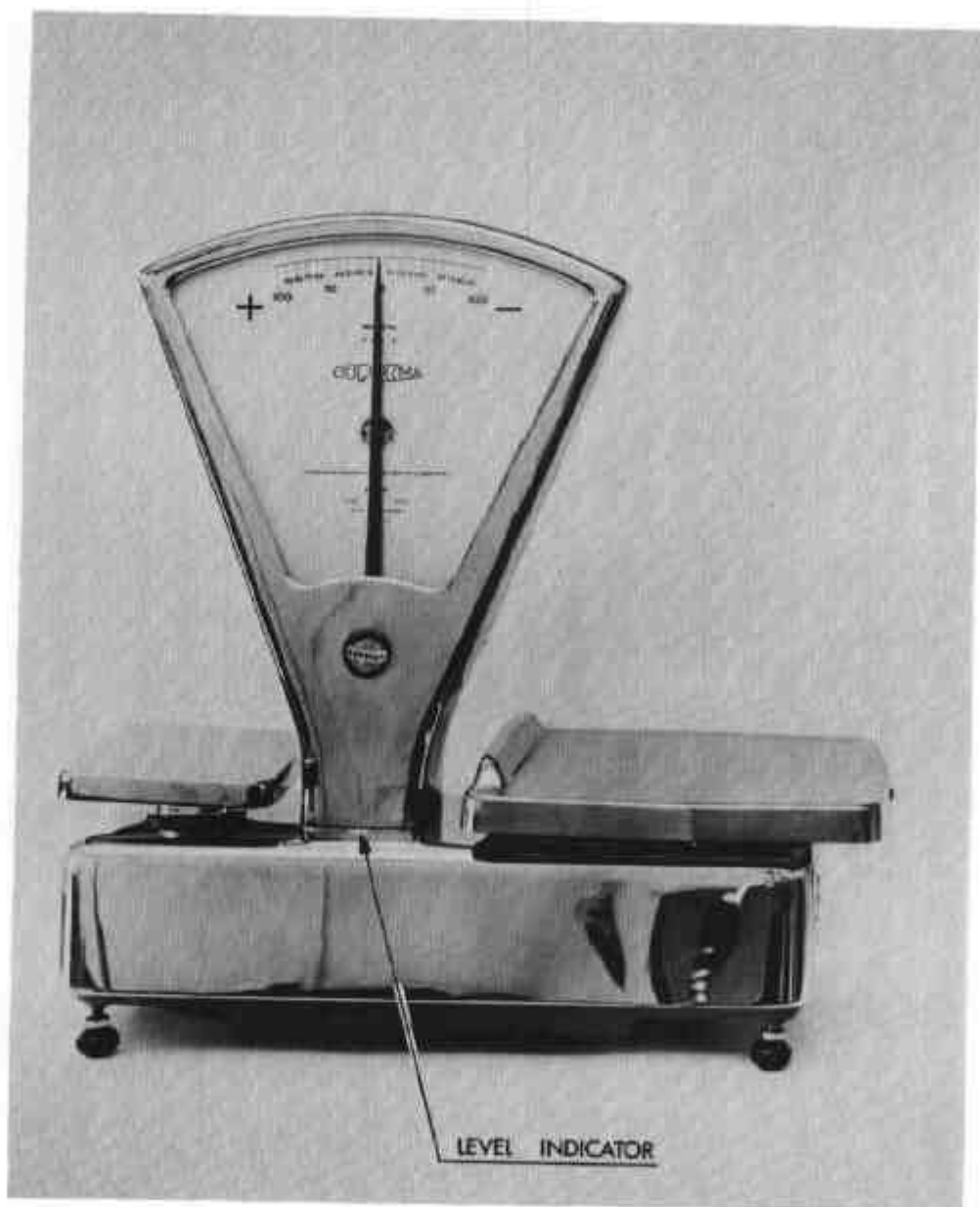
The headwork, which is illustrated in Figures 5 and 6, may be parallel or at right angles to the centre line of the main lever.

The instrument is marked "not for retail counter use".

2. The pattern may be fitted with graduated or ungraduated tare bars as described in Certificate No 6/4C/7, in which case only one dial is fitted and the tare bar is on the same side of the headwork as the dial.
3. The pattern may be fitted with zero-to-capacity dials. If the dials are fitted on both sides of the headwork, the instrument may be used on a retail counter; the notice "not for retail counter use" will be removed.

FIGURE 6/4A/5 - 1

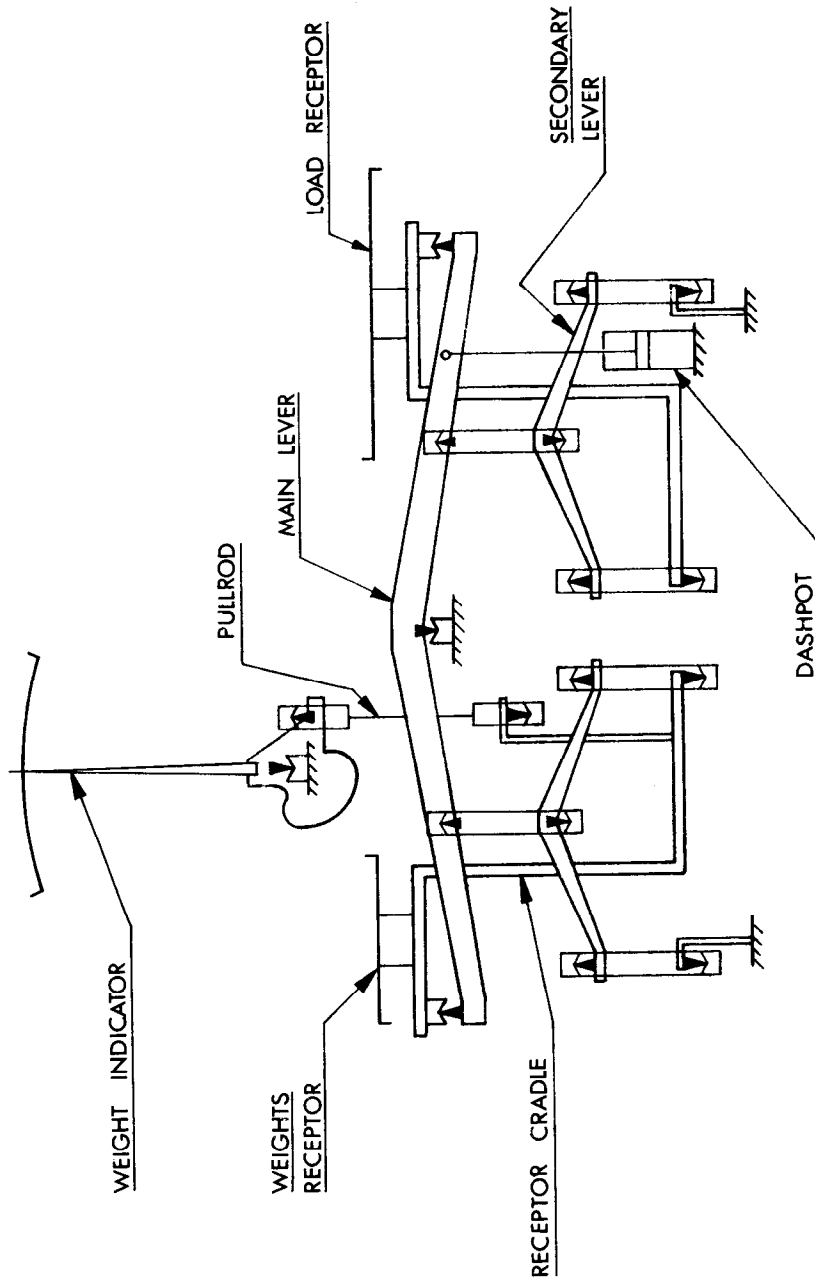
26



21/5/74

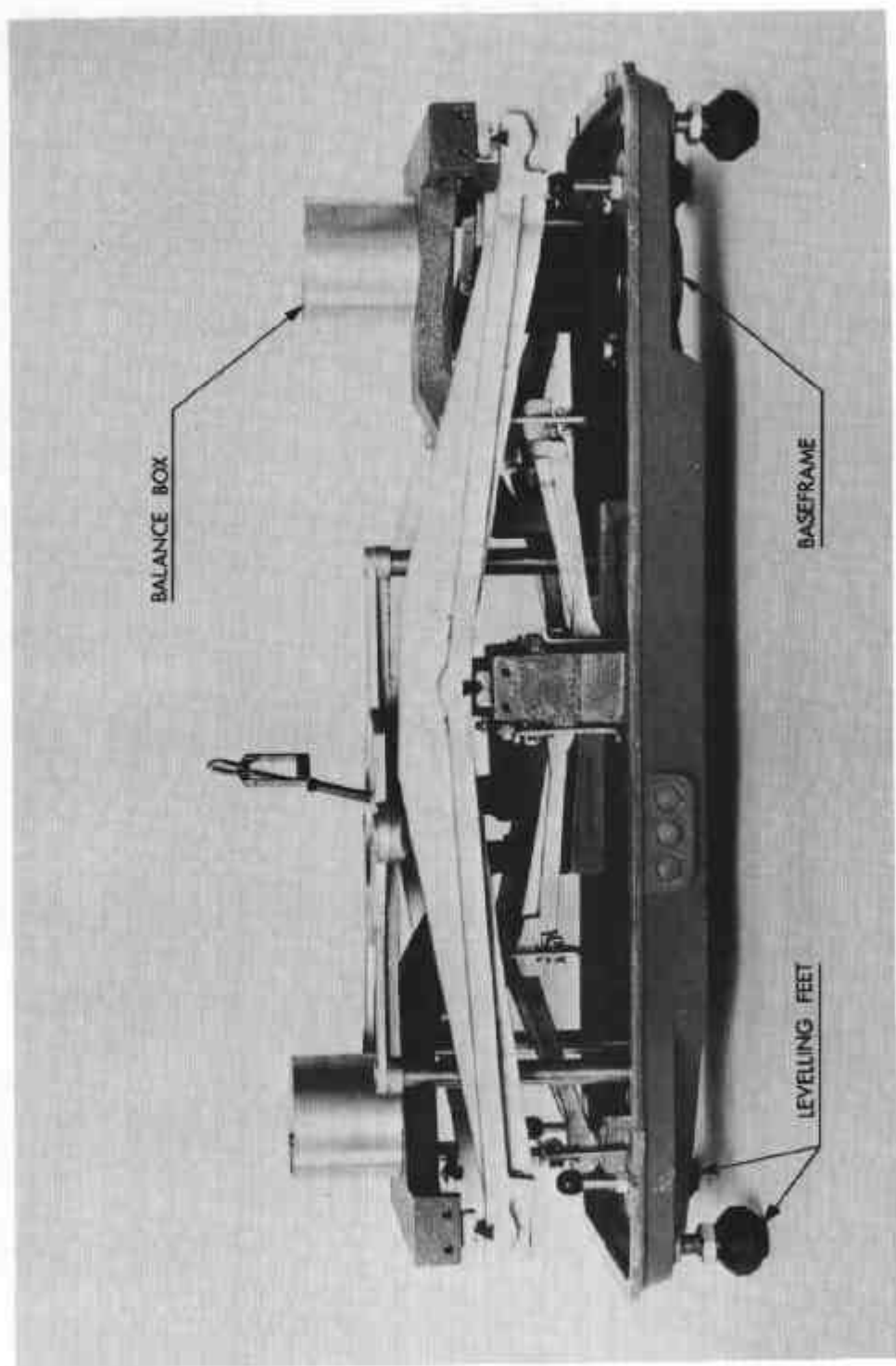
Suprema K15 Weighing Instrument

FIGURE 6/4A/5 - 2



Lever System -- Schematic Diagram

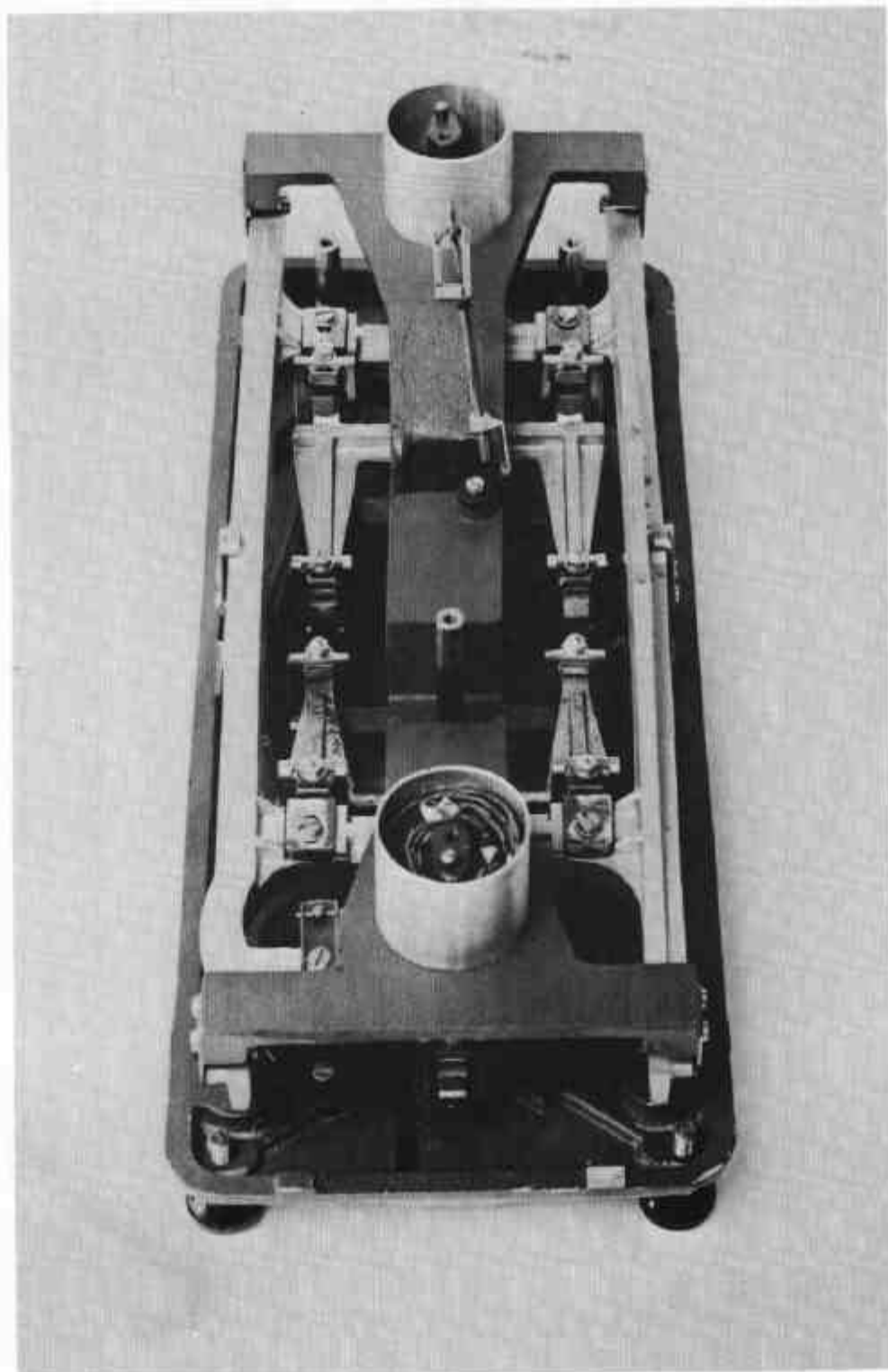
FIGURE 6/4A/5 - 3



Lever System

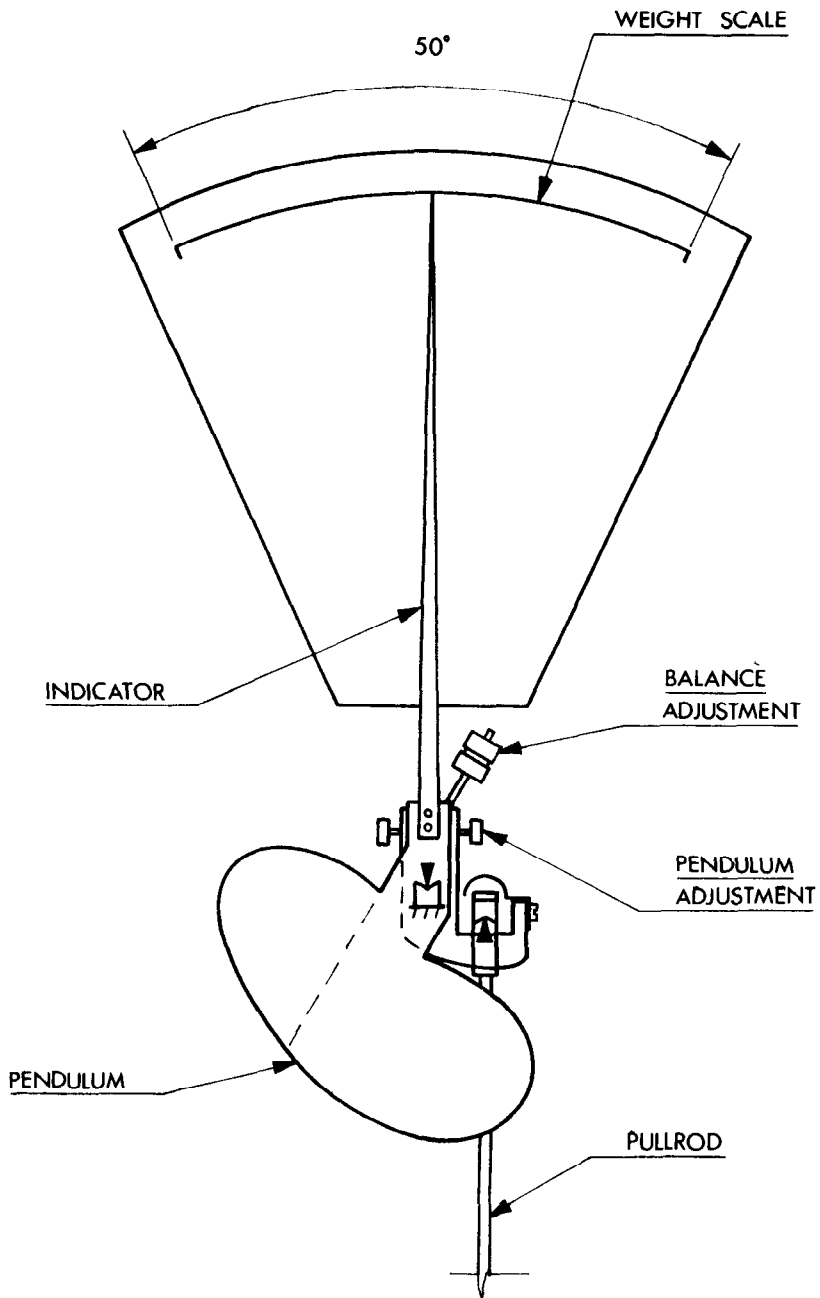
21/5/74

FIGURE 6/4A/5 - 4



Lever System

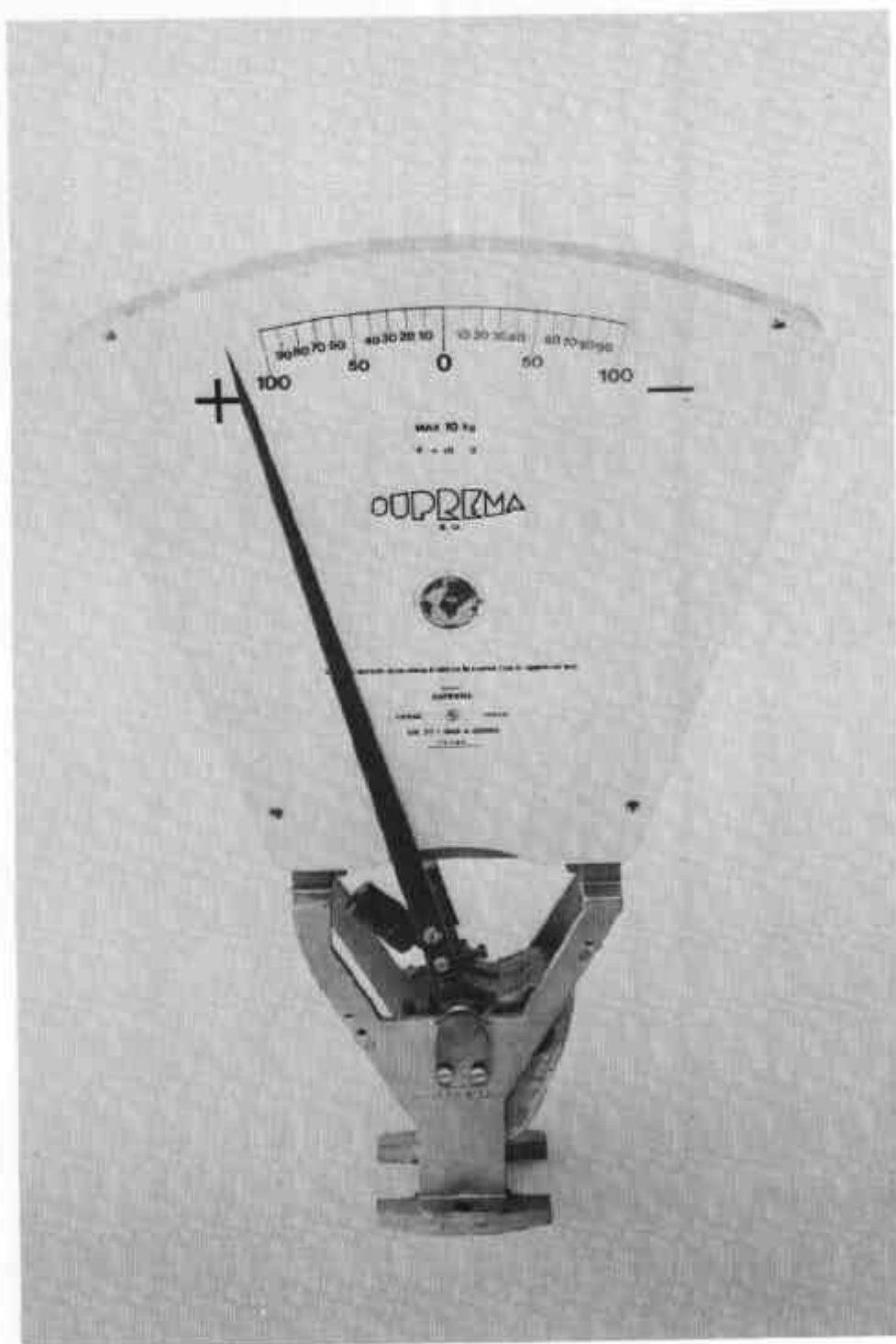
FIGURE 6/4A/5 - 5



Pendulum-resistant Mechanism — Schematic Diagram

21/5/74

FIGURE 6/4A/5 - 6



Pendulum-resistant Mechanism and Centre-zero Dial

21/5/74