



Weights and Measures
(National Standards)
Act 1960-1966

Weights and Measures
(Patterns of Instruments)
Regulations

COMMONWEALTH OF AUSTRALIA

NATIONAL STANDARDS COMMISSION

Certificate of Approval

CERTIFICATE NUMBER 8/25

This Certificate replaces Certificate No 8/25 dated 15 November 1972. *

In respect of the pattern of

Alfa-Laval Hamilton Farm Milk Tank and Variants.

Submitted and
manufactured by:

Alfa-Laval Hamilton Pty Ltd,
60-66 Keon Parade,
Keon Park,
Victoria. 3073.

This is to certify that the pattern and variants of the instrument illustrated and described in this Certificate have been examined by the National Standards Commission under the provisions of the abovementioned Regulations and have been approved as being suitable for use for trade.

The pattern and variants were approved on 8 November 1972. Approval for the pattern and variant 1 was withdrawn on 14 December 1973.

The pattern and variants are marked "NSC No 8/25", and comply with the General Specifications for Measuring Instruments to be Used for Trade, excluding, in the case of variant 2, the requirements relating to the sensitivity of the level indicator.

* NOTE: Figures 8/25 - 1 to 6 of the previous issue form part of this Certificate and must be retained.

9/1/74

Cont'd over

This Certificate comprises:

Pages 1 to 4 dated 9 January 1974.

Figures 8/25 - 1 to 6 dated 15 November 1972.

Date of issue 9 January 1974.

Signed

A handwritten signature in cursive script, appearing to read "Philip J. Hancock".

A person authorised by the Commission
to sign Certificates under the
abovementioned Regulations.

† DESCRIPTION OF PATTERN

The pattern (see Figures 1, 2 and 3) is of a refrigerated farm milk tank having a capacity of 1400 litres.

It consists of an enclosed horizontal tank of 18 SWG stainless steel, sheathed in a stainless steel casing having a shell and end thickness of not less than 18 SWG and 16 SWG respectively. The space between is filled with insulating material.

The refrigerated bottom which slopes to the outlet is of dimple plate, to which four adjustable legs are attached.

The maximum internal dimensions of the tank are 1370 mm wide and 1670 mm long.

To the top of the tank (see Figure 2) are fitted a dipstick socket, a spirit level, an agitator motor, a manhole, temperature-measuring equipment, a boss carrying the handle for operating the internal plug and a fitting for in-place-cleaning. Details of the dipstick boss and socket are shown in Figure 4.

DESCRIPTION OF VARIANTS

†1. In other capacities, as follow:

Capacity	Maximum width	Maximum length	No of legs
litres	mm	mm	
*1100 to 1400	1370	1670	4
1600 to 1800	1370	2250	6
2000 to 2300	1370	2900	6
2700 to 3000	1675	2900	6

* Includes the pattern

2. The pattern and variant 1 without a spirit level but with two dipstick

† Approval withdrawn on 14 December 1973.

sockets, either to suit the one dipstick, and a notice stating "level condition of the tank to be adjusted if dipstick readings from both sockets differ by more than 1 mm".

The dipstick sockets (detailed in Figure 4) are marked "A" and "B" respectively and are diagonally opposite as shown in Figure 5.

A plumb-bob level indicator (see Figure 6), for showing the transverse-level condition, is attached to the outer sheathing at the discharge end. If the plumb line does not touch the sides of the bottom slot, the transverse-level condition is correct.

The longitudinal level is determined by the dipstick.

Four level marks are applied to the outer casing (see Figure 3).

GENERAL NOTES

Approval of the pattern and variant 1 has been withdrawn because of the unreliability of spirit levels on these tanks.

8/25
7/9/84



NATIONAL STANDARDS COMMISSION

CANCELLATION CERTIFICATE FOR APPROVAL No 8/25

This is to advise that the approval of the

Alfa-Laval Hamilton Farm Milk Tank

submitted by Alfa-Laval Hamilton

62-66 Keon Parade

Keon Park Victoria 3073

expired in respect of new instruments on 24/8/84.

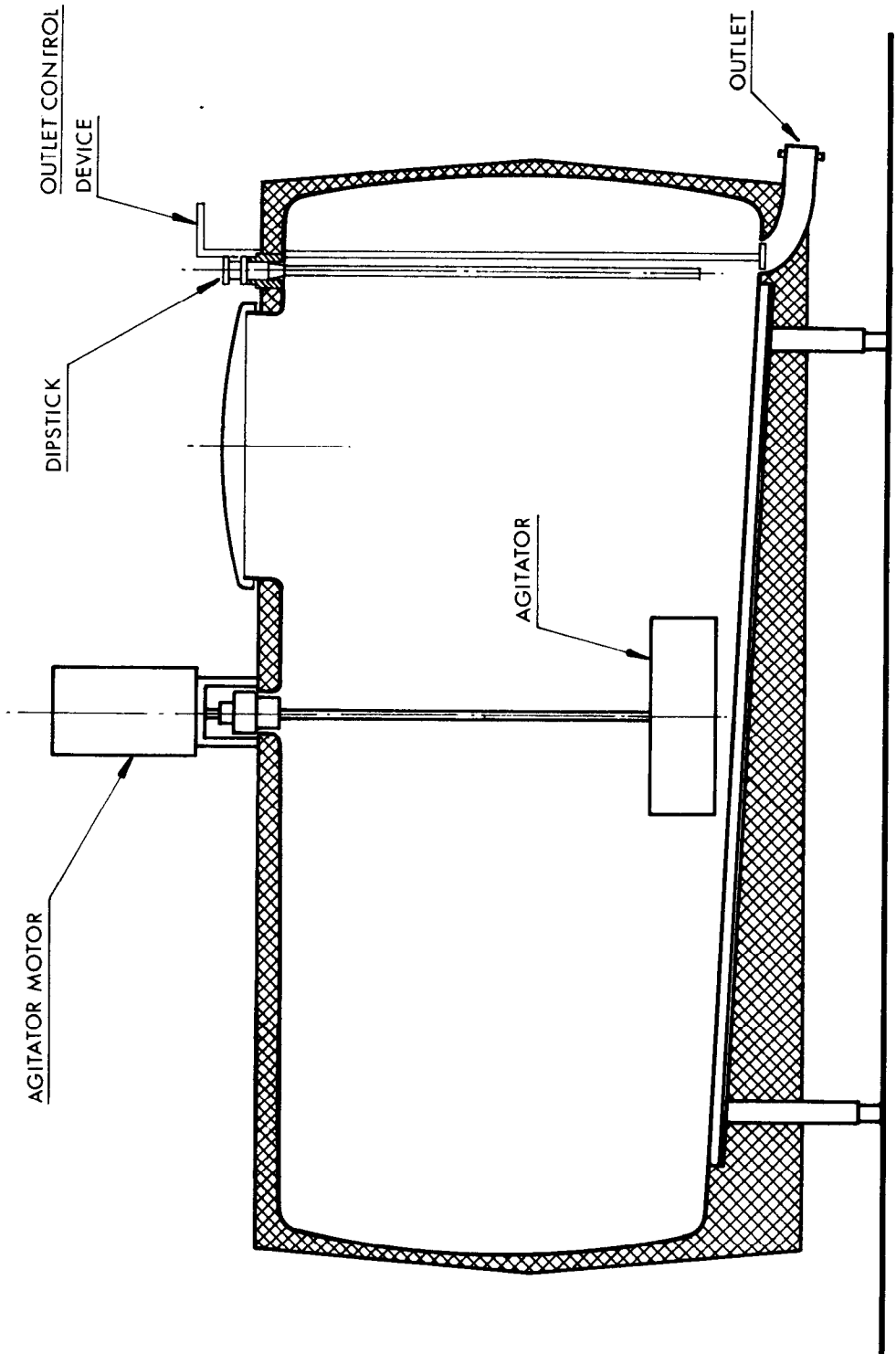
Instruments which were verified before that date may, with the concurrence of the relevant verifying authority, be submitted for reverification.

Signed

A handwritten signature in black ink, appearing to read 'J. Peim'. The signature is written in a cursive style with a large initial 'P'.

Executive Director

FIGURE 8/25 - 1



Cross-sectional Elevation — Side View

FIGURE 8/25 - 2

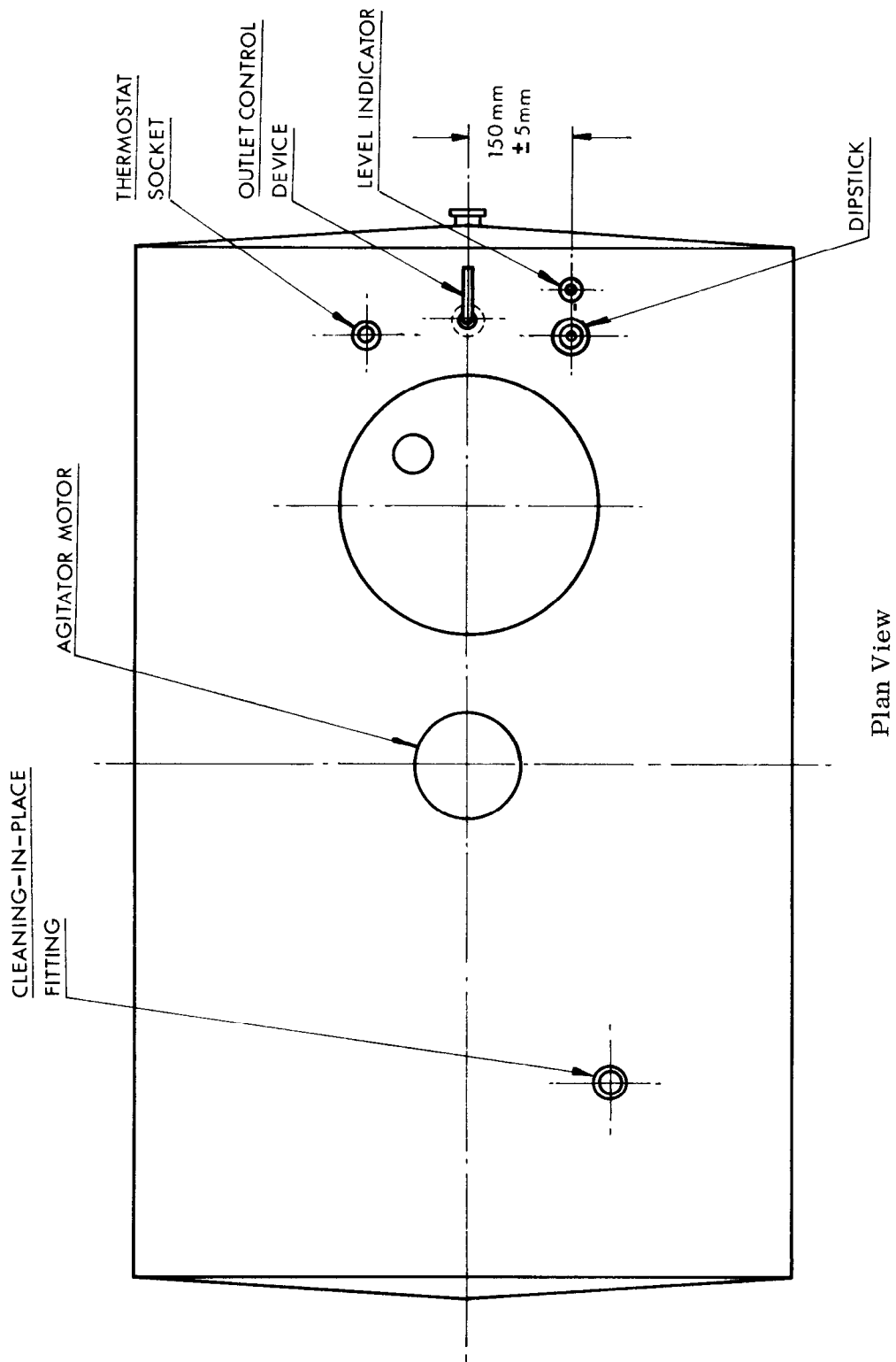
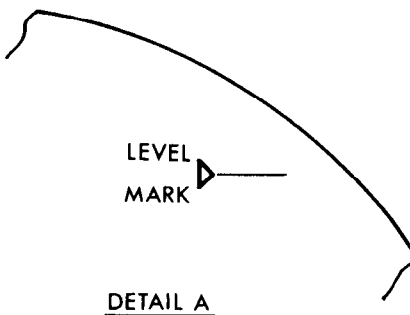
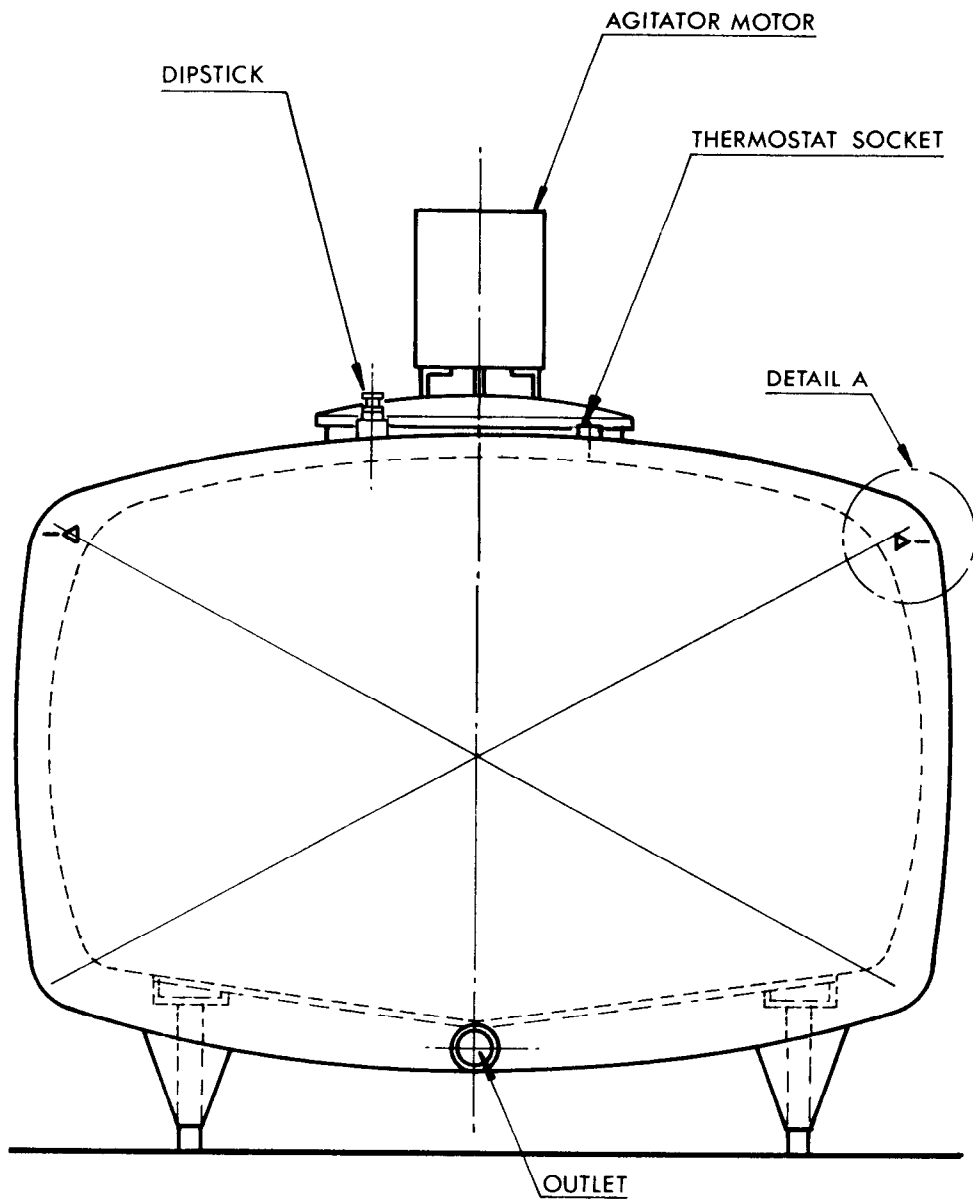


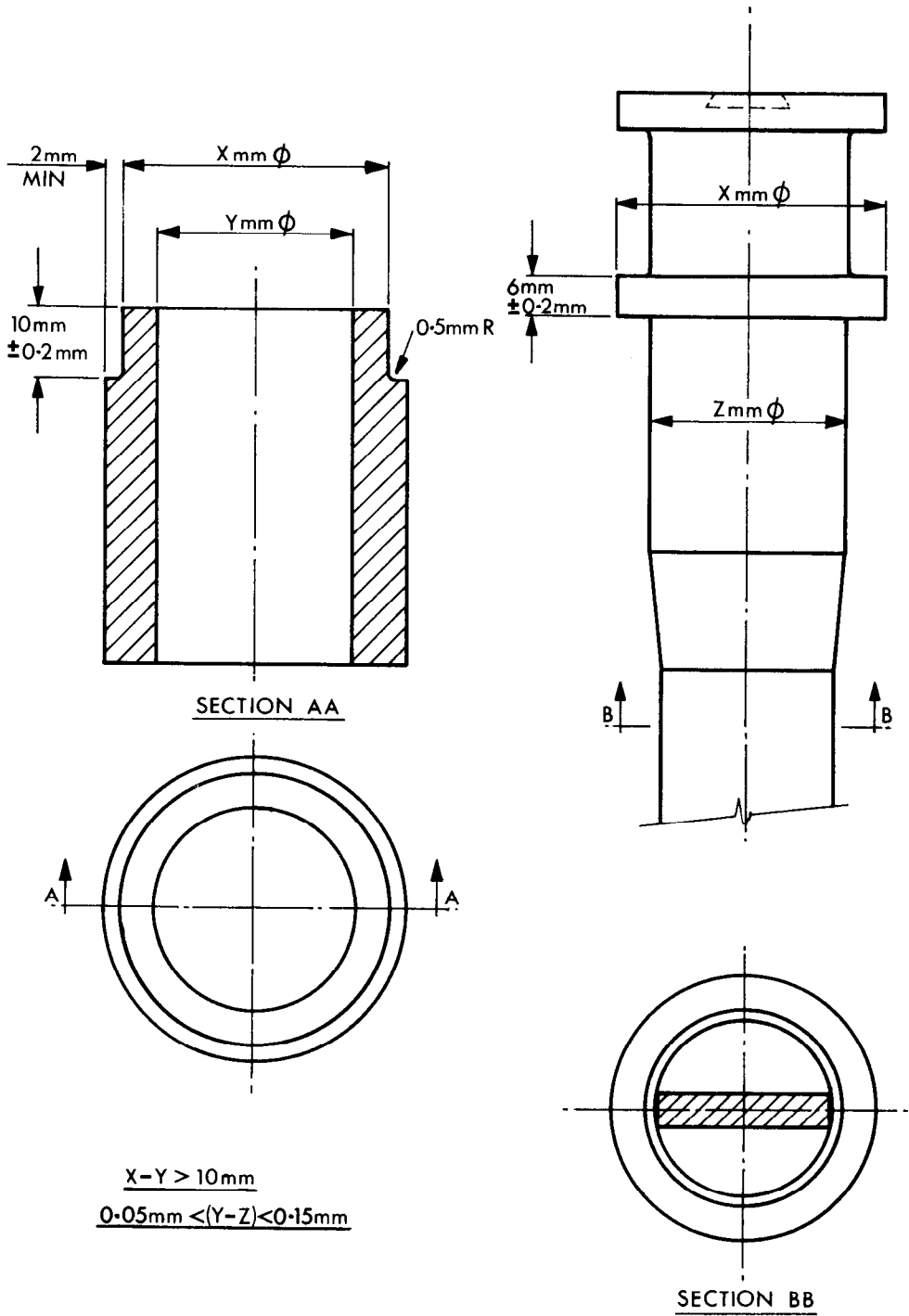
FIGURE 8/25 - 3



End Elevation

15/11/72

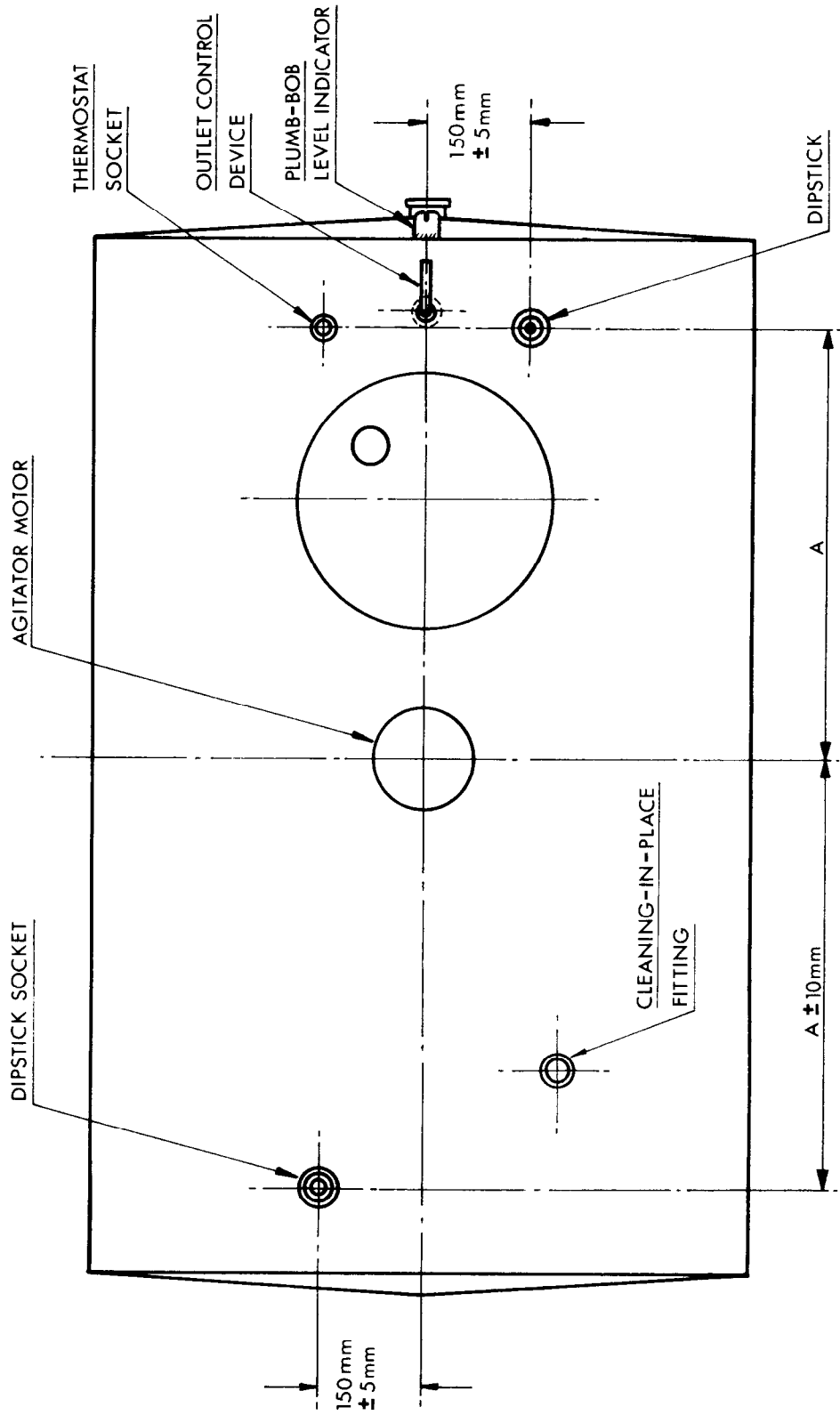
FIGURE 8/25 - 4



Detail of Socket and Boss for Dipstick

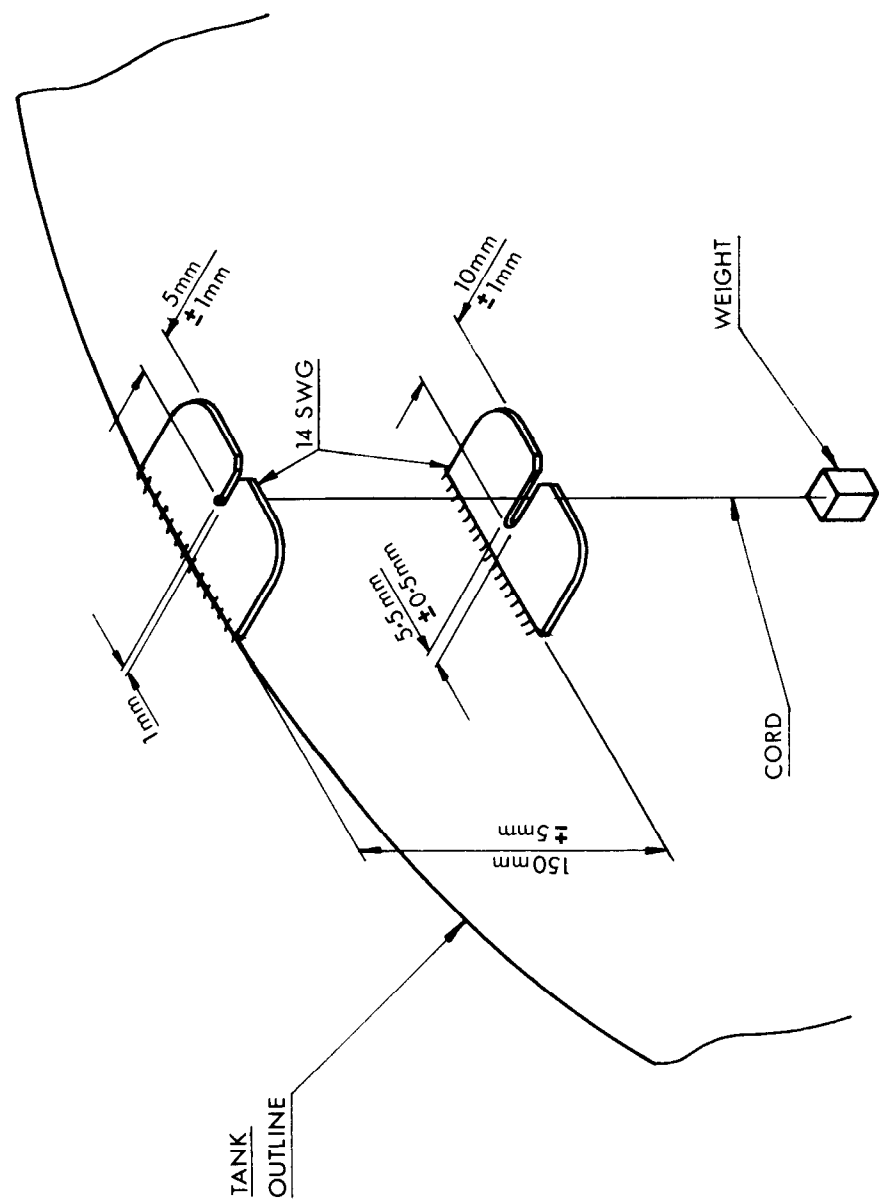
15/11/72

FIGURE 8/25 - 5



Two-socket Variant — Plan View

FIGURE 8/25 - 6



Plumb-bob Level Indicator