

National Standards Commission



Certificate of Approval

No 8/36

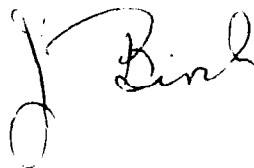
Issued under Regulation 9
of the
National Measurement (Patterns of Instruments) Regulations

This is to certify that an approval for use for trade has been granted in respect of the

Frigrite Model CP 13600 Farm Milk Tank

submitted by Frigrite Refrigeration
27 Grange Road
Cheltenham VIC 3192.

Signed and sealed by a person authorised under Regulation 9 of the National Measurement (Patterns of Instruments) Regulations to exercise the powers and functions of the Commission under this Regulation.



CONDITIONS OF APPROVAL

This approval is subject to review on or after 1/3/93.
This approval expires in respect of new instruments on ~~1/3/94~~.



Instruments purporting to comply with this approval shall be marked NSC No 8/36 and only by persons authorised by the submittor.

It is the submittor's responsibility to ensure that all instruments marked with this approval number are constructed as described in the drawings and specifications lodged with the Commission and with the relevant Certificate of Approval and Technical Schedule. Failure to comply with this Condition may attract penalty under Section 19B of the National Measurement Act and may result in cancellation or withdrawal of the approval, in accordance with the Commission's Document 106.

The Commission reserves the right to examine any instrument or component of an instrument purporting to comply with this approval.

Special:

Instruments purporting to comply with this approval shall conform with the relevant requirements of Australian Standard AS 1187-1988 for Refrigerated Farm Milk Tank-units.

DESCRIPTIVE ADVICE

Pattern: approved 12/2/88

- A Frigrite model CP 13600 refrigerated farm milk tank of 13 600 L capacity.

Variant: approved 12/2/88

1. In other capacities as listed in Table 1.

Technical Schedule No 8/36 describes the pattern and variant 1.

Variant: approved 9/11/90

2. In other capacities as listed in Table 2.

Technical Schedule No 8/36 Variation No 1 describes variant 2.

FILING ADVICE

Certificate of Approval No 8/36 dated 19/4/88 is superseded by this Certificate and may be destroyed. The documentation for this approval now comprises.

Certificate of Approval No 8/36 dated 18/2/91
Technical Schedule No 8/36 dated 19/4/88 (incl. Table 1)
Technical Schedule No 8/36 Variation No 1 dated 18/2/91 (incl. Table 2)
Test Procedure No 8/36 dated 19/4/88
Figures 1 to 4 dated 19/4/88



NATIONAL STANDARDS COMMISSION

TECHNICAL SCHEDULE No 8/36

Pattern: Frigrite Model CP 13600 Farm Milk Tank.

Submittor: Frigrite Refrigeration
27 Grange Road
Cheltenham Victoria 3192.

1. Description of Pattern

- (i) The pattern (Figure 1 and Table 1) is a dome top refrigerated farm milk tank of 13 600 L capacity incorporating a sight-gauge for indicating the volume.
- (ii) The tank is a vertical stainless steel cylinder sheathed in an outer casing of stainless steel; the cavity between is filled with insulating material. The bottom is in the form of an offset cone sloping to the outlet control valve with an interconnected 3-way valve for introducing milk into and draining milk from the sight-gauge, and to allow sampling of milk. The lower portion of the tank is refrigerated.

An optional milk-sampling valve may be fitted to the tank.

- (iii) A single sight-gauge mounted in a vertical position is located in the vicinity of the outlet valve and comprises a plastic sight-tube fitted in a rigid support channel fixed to the side of the tank adjacent to a stainless steel scale (Figures 2 and 3).

The transparent sight-tube, complying with Australian Standard AS 2070 for Plastics Materials for Food Contact Use, has a nominal internal diameter of 24 mm and a nominal thickness of 3 mm.

The stainless steel scale (Figure 3), having a width of 25 mm and thickness of 5 mm, is graduated in 20 L increments and has a scale spacing of not less than 3 mm.

- (vi) A Roman Level device (Figure 4), is permanently fixed to the tank for indicating the reference position of the tank and the sight-gauge. The Roman Level is in the form of a rigid "U" tube having an internal nominal diameter of 6 mm, with each end of the tube positioned adjacent to a datum level mark. One end of the Roman Level tube and the corresponding datum level mark are located not greater than 5 cm from the sight-tube and the other end is located on the opposite side of the tank. Levelling is effected by means of adjustable legs.
- (vii) The tank is fitted with a closed CIP (clean-in-place) system and with a side entry access hole.

1.1 Verification Provision

Provision is made for a verification mark to be applied.

1.2 Markings

The following is marked on a nameplate permanently attached to the instrument in a clearly visible location:

Manufacturer's name or mark	
Model number	
Serial number	
NSC approval number	NSC No 8/36
Maximum capacity L
Year of manufacture	

In addition, the volume corresponding to the datum level marks is permanently indicated.

2. Description of Variant 1

Similar to the pattern but in other capacities as listed in Table 1.

Note: Model CP 6600 has either a side entry access hole as per the pattern or a top entry access hole.

TABLE 1

Model	Capacity (litres)	Diameter (mm)	Height (mm)
CP 13600	13 600	2540	3607
CP 10600	10 600	2540	2946
CP 6600	6 600	2540	2032



NATIONAL STANDARDS COMMISSION

8/36
19/4/88

TEST PROCEDURE No 8/36

The following tests should be conducted in addition to any tests specified in the Inspector's Handbook.

The maximum permissible error for farm milk tanks incorporating a sight-gauge is ± 1 scale interval.

1. Level Position of The Tank

Using the permanently fixed Roman Level (*), the tank is in level position when the level of liquid in the Roman Level corresponds with the datum level marks on the tank.

(* Application of the Roman Level is given in NSC Document 115)

2. Tank Drainage

With the tank in its level position and containing a volume of 40 L, at least 39.8 L shall run out by gravity in 1 minute.

3. Calibrated Position of The Sight-gauge

Fill the tank to the datum level marks and check that the reading on the sight-gauge corresponds with the volume represented by the datum level marks.

4. Sight-gauge Accuracy

To determine the accuracy of the sight-gauge, deliver a measured quantity into the tank at the following volumes and compare with the sight-gauge reading;

- (i) The lowest scale mark;
- (ii) At least three, approximately evenly spaced, intermediate scale marks;
- (iii) The highest scale mark.



National Standards Commission

TECHNICAL SCHEDULE No 8/36

VARIATION No 1

Pattern: Frigrite Model CP 13600 Farm Milk Tank.

Submittor: Frigrite Refrigeration
27 Grange Road
Cheltenham VIC 3192.

1. Description of Variant 2

In certain capacities as listed in Table 2.

TABLE 2

Model	Capacity (litres)	Number of Legs	Diameter (mm)	Height (mm)
CP 13800	13 800	6	2 540	3 607
CP 11000	11 000	6	2 540	2 946
CP 7000	7 000	6	2 540	2 032

National Standards Commission



NOTIFICATION OF CHANGE

CERTIFICATE OF APPROVAL No 8/36

CHANGE No 1

The following change is made to the approval documentation for the

Frigrite Model CP 13600 Farm Milk Tank

submitted by Frigrite Refrigeration
27 Grange Road
Cheltenham VIC 3192.

In Technical Schedule No 8/36 Variation No 1 dated 18/2/91, Table 2 is replaced by the Table below, in which models CP 3800 and CP 4800 have been added.

TABLE 2

Model	Capacity (litres)	Number of Legs	Diameter (mm)	Height (mm)
CP 13800	13 800	6	2 540	3 607
CP 11000	11 000	6	2 540	2 946
CP 7000	7 000	6	2 540	2 032
CP 4800	4 800	6	2 083	2 032
CP 3800	3 800	4	2 083	1 727

Signed and sealed by a person authorised under Regulation 9 of the National Measurement (Patterns of Instruments) Regulations to exercise the powers and functions of the Commission under this Regulation.

A handwritten signature in black ink, appearing to be 'S. Day', written over a horizontal line.

National Standards Commission



NOTIFICATION OF CHANGE

CERTIFICATE OF APPROVAL No 8/36

CHANGE No 2

The following change is made to the approval documentation for the

Frigrite Model CP 13600 Milk Tank

submitted by Frigrite Refrigeration
27 Grange Road
Cheltenham VIC 3192.

In Certificate of Approval No 8/36 dated 18/2/91, the Condition of Approval referring to the expiry of the approval should be amended to now read:

"This approval expires in respect of new instruments on 1/9/94."

Signed and sealed by a person authorised under Regulation 9 of the National Measurement (Patterns of Measuring Instruments) Regulations to exercise the powers and functions of the Commission under this Regulation.

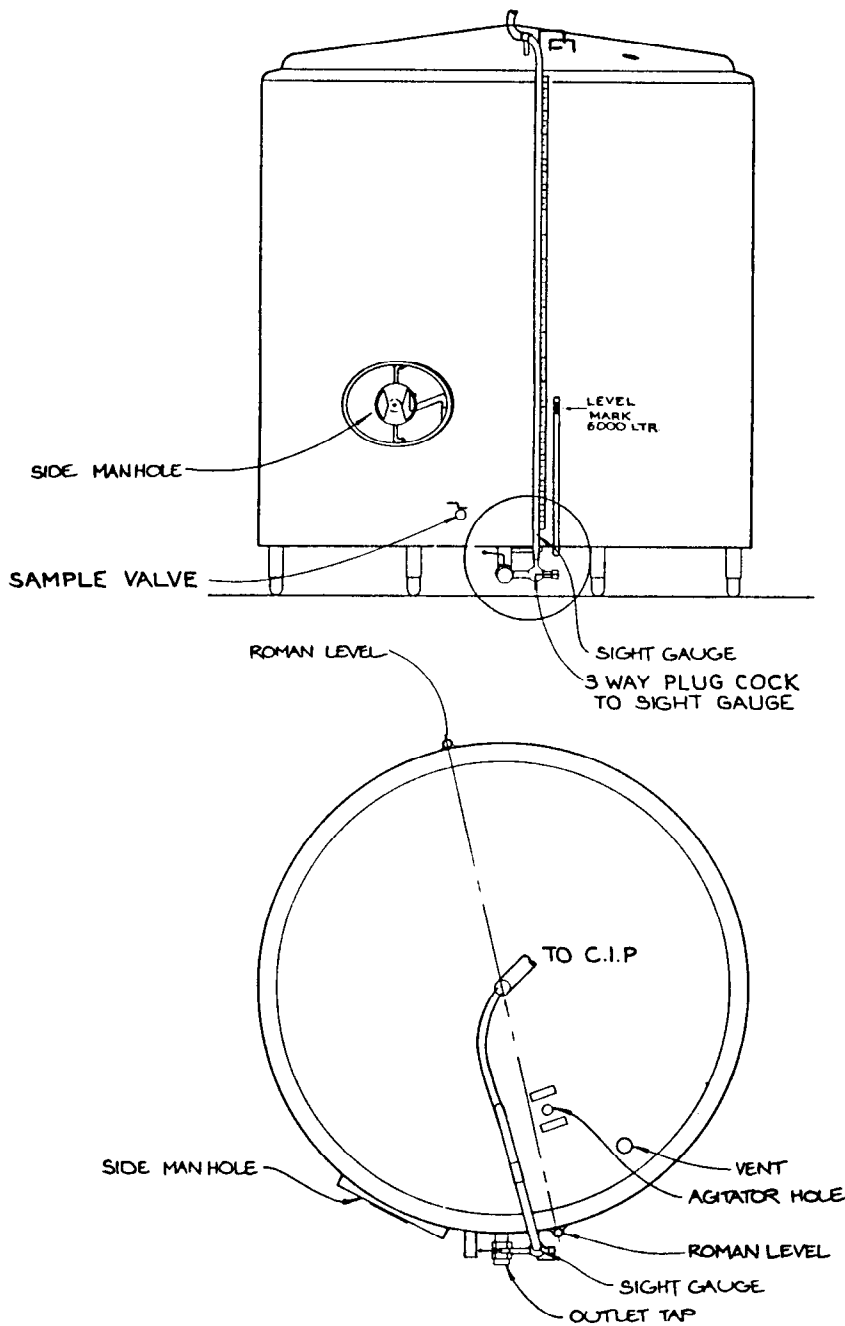
A handwritten signature in black ink, appearing to read 'J. Birch'. The signature is written in a cursive style with a large initial 'J'.

FIGURE 8/36 - 1



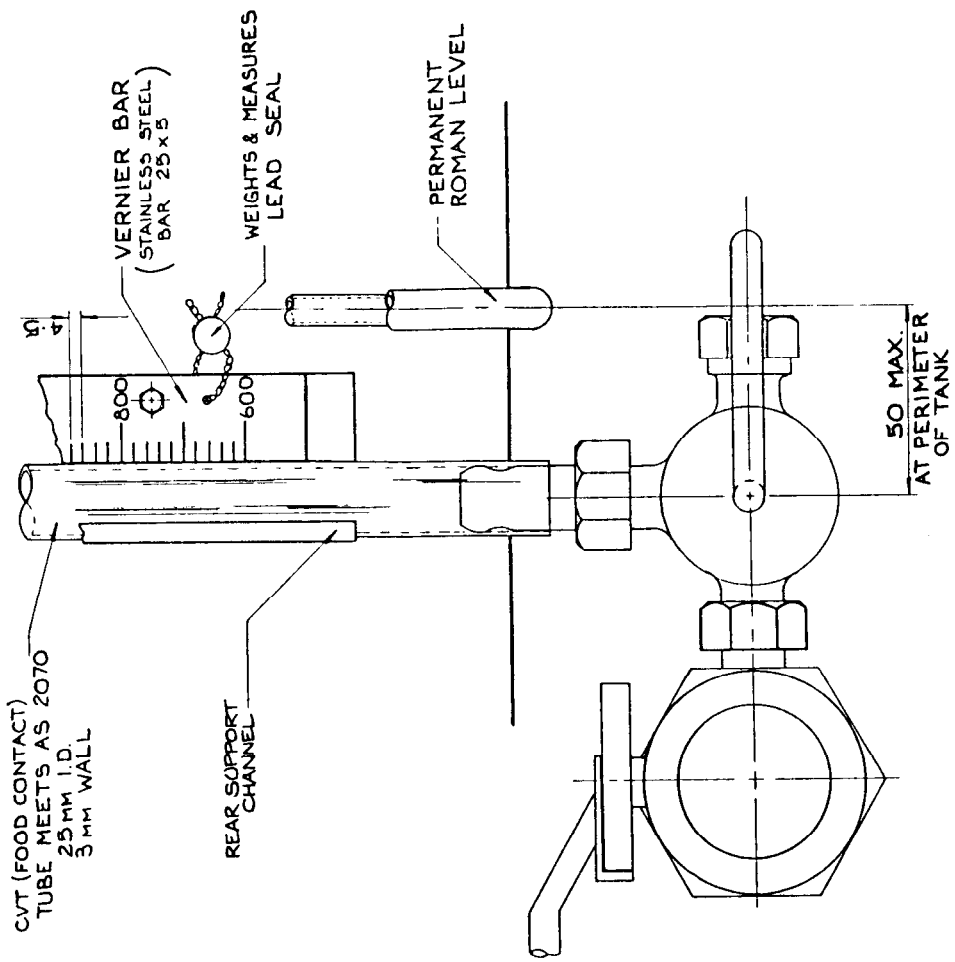
Frigrite Model CP 13600 Farm Milk Tank

FIGURE 8/36 - 2



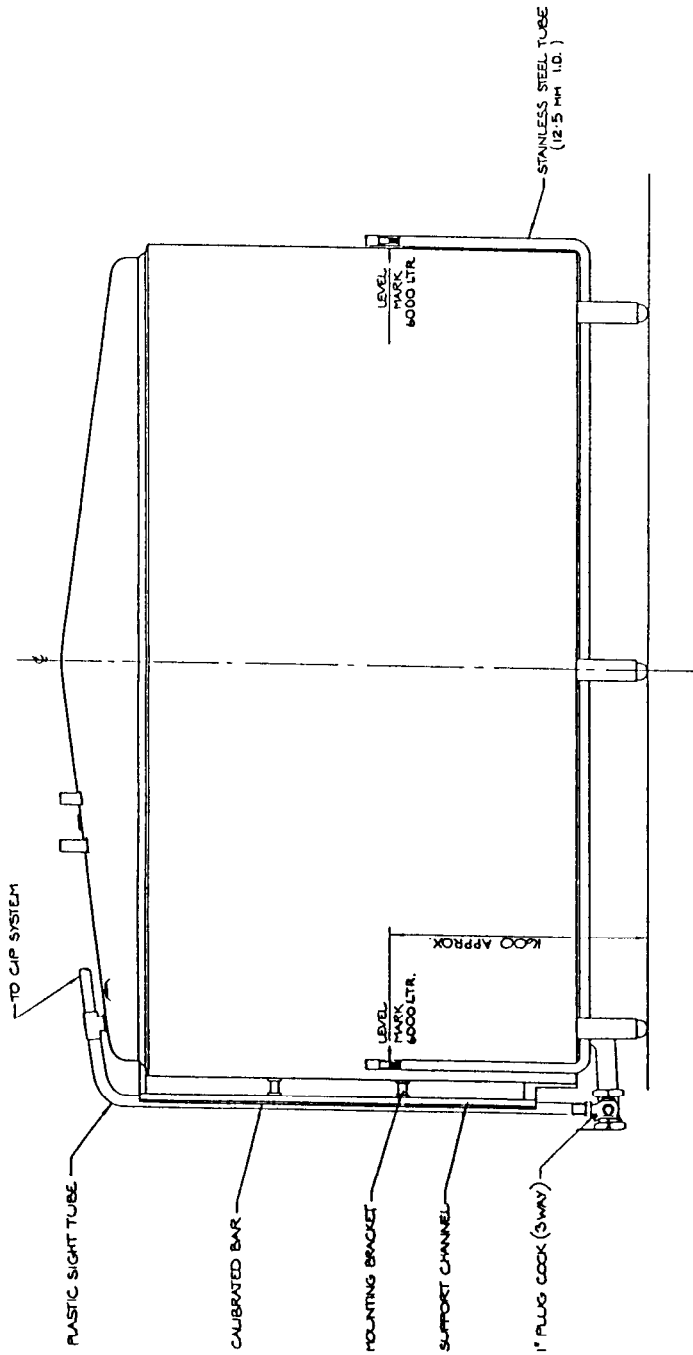
Typical Tank With Sight-gauge

FIGURE 8/36 - 3



Showing Sight-gauge And 3-way Valve

FIGURE 8/36 - 4



Showing Roman Level