

National Standards Commission



Certificate of Approval

No 8/64

Issued under Regulation 9
of the
National Measurement (Patterns of Measuring Instruments) Regulations

This is to certify that an approval for use for trade has been granted in respect of the

Furphy Model FHV 94/72 Milk Tank

submitted by J Furphy & Sons Pty Ltd
New Dookie Road
Shepparton VIC 3630.

NOTE: This Certificate relates to the suitability of the pattern of the instrument for use for trade only in respect of its metrological characteristics. This Certificate does not constitute or imply any guarantee of compliance by the manufacturer or any other person with any requirements regarding safety.

CONDITIONS OF APPROVAL

This approval is subject to review on or after 1 July 2000.
This approval expires in respect of new instruments on 1 July 2001.

Instruments purporting to comply with this approval shall be marked NSC No 8/64 and only by persons authorised by the submittor.

It is the submitter's responsibility to ensure that all instruments marked with this approval number are constructed as described in the documentation lodged with the Commission and with the relevant Certificate of Approval and Technical Schedule. Failure to comply with this Condition may attract penalties under Section 19B of the National Measurement Act and may result in cancellation or withdrawal of the approval, in accordance with the Commission's Document 106.

The Commission reserves the right to examine any instrument or component of an instrument purporting to comply with this approval.

DESCRIPTIVE ADVICE

Pattern: approved 21 June 1995

- A Furphy model FHV 94/72 horizontal milk tank of 7 200 L capacity incorporating a sight-gauge for the measurement of the volume.

Variant: approved 21 June 1995

1. Other models and in capacities as listed in Table 1.

Technical Schedule No 8/64 describes the pattern and variant 1.

FILING ADVICE

The documentation for this approval comprises:

- Certificate of Approval No 8/64 dated 25 October 1995
- Technical Schedule No 8/64 dated 25 October 1995 (incl. Table 1 and Test Procedure)
- Figures 1 to 3 dated 25 October 1995

Signed and sealed by a person authorised under Regulation 9 of the National Measurement (Patterns of Measuring Instruments) Regulations to exercise the powers and functions of the Commission under this Regulation.





National Standards Commission

TECHNICAL SCHEDULE No 8/64

Pattern: Furphy Model FHV 94/72 Milk Tank.

Submittor: J Furphy & Sons Pty Ltd
New Dookie Road
Shepparton VIC 3630.

1. Description of Pattern

A Furphy model FHV 94/72 horizontal cylindrical refrigerated milk tank of 7 200 L capacity (Figure 1 and Table 1) incorporating a sight-gauge for the measurement of the volume.

1.1 Details

- (i) The tank (Figures 1 and 2) is a horizontal stainless steel cylinder sheathed in an outer casing of stainless steel; the cavity between is filled with insulating material. An optional milk-sampling valve may be fitted to the tank.
- (ii) A single sight-gauge mounted in a vertical position is located in the vicinity of the outlet valve and comprises a transparent sight-tube fitted in a rigid stainless steel support channel fixed to the side of the tank adjacent to a stainless steel scale. The scale has provision for a lead or a lead and wire seal to be attached to the scale mounting assembly. The sight-tube is made of either glass or suitable plastic.

The scale is graduated in 20 L intervals.

The sight-gauge valve allows the milk to enter the sight-gauge and be isolated from the contents of the tank. An additional valve is located at the bottom of the sight-gauge which allows the milk in the sight-gauge and the interconnected pipe between the outlet valve and the sight-gauge to be drained without draining the contents of the tank (Figure 3).

- (iii) Levelling is effected by means of 4 adjustable legs with reference to the datum level marks permanently marked on the tank. The volume represented by the datum level marks is marked on the sight-gauge scale.

Each corner leg has provision for fixing the leg to the floor, and provision for sealing, after levelling.

- (iv) Provision is made for a CIP (clean-in-place) system for both the tank and the sight-gauge.

- (v) Access for inspection is provided by either a side entry opening or a top entry opening.

1.2 Verification/Certification Provision

Provision is made for a verification/certification mark to be applied.

1.3 Markings

The following is marked on a nameplate permanently attached to the instrument in a clearly visible location:

Manufacturer's name or mark	
Model number	
Serial number	
NSC approval number	NSC No 8/64
Maximum capacity L

In addition, the volume represented by the datum level marks is marked on the nameplate.

2. Description of Variant 1

Models and capacities as listed in Table 1.

TEST PROCEDURE

Instruments should be tested in conjunction with any relevant tests specified in the Inspector's Handbook.

Maximum Permissible Error at Verification/Certification

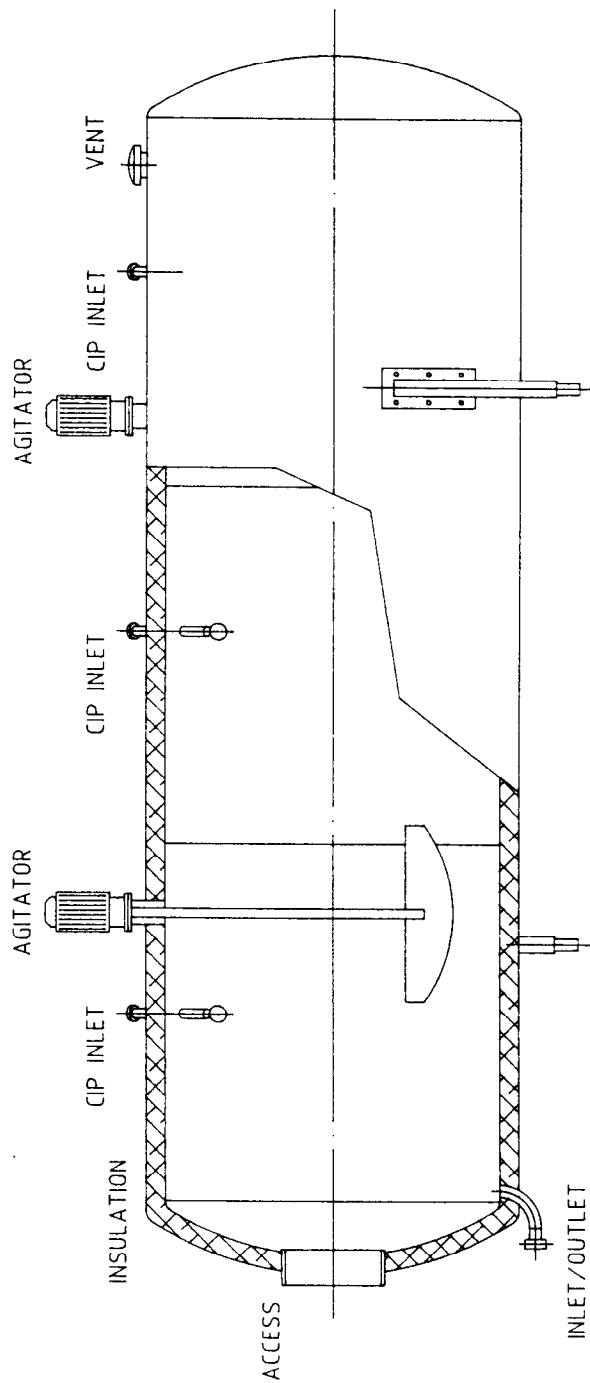
The maximum permissible error for farm milk tanks incorporating a sight-gauge is ± 1 scale interval.

TABLE 1

Model Number	Maximum Capacity (litres)	Number of legs	Scale Interval (litres)
FHV 94/55	5 500	4	20
FHV 94/65	6 500	4	20
FHV 94/72	7 200	4	20
FHV 94/82 (*)	8 000	4	20
FHV 94/83 (*)	8 000	4	20
FHV 94/100	10 000	4	20
FHV 94/121 (#)	12 000	4	50
FHV 94/122 (#)	12 000	4	50
FHV 94/125	12 500	6	50
FHV 94/145	14 500	6	50
FHV 94/150	15 000	6	50
FHV 94/155	15 500	6	50
FHV 94/195	19 500	8	50
FHV 94/240	24 000	8	50

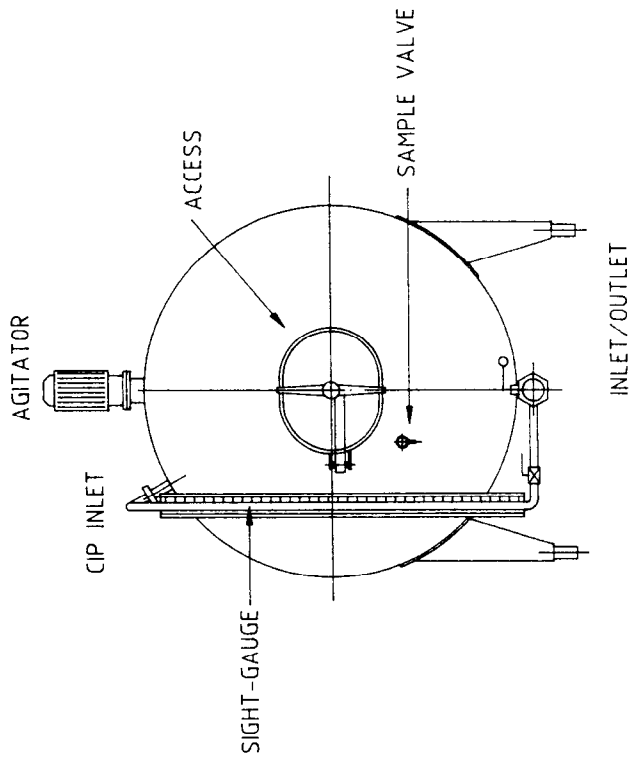
(*) (#) These models have different internal dimensions but the same capacity.

FIGURE 8/64 - 1



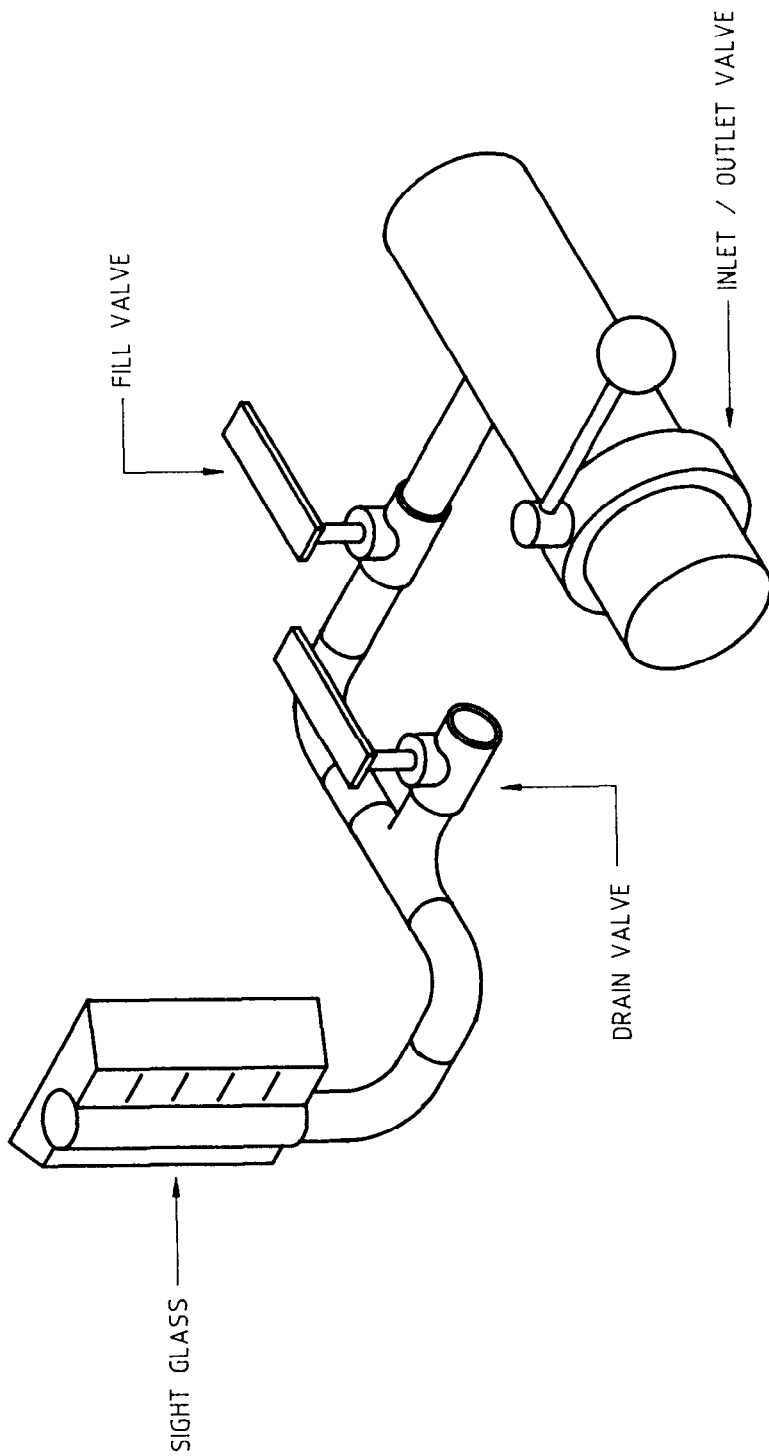
Furphy Model FHV 94/72 Milk Tank

FIGURE 8/64 - 2



Model FHV 94/72 - End View

FIGURE 8/64 - 3



Showing Valving Arrangement