



# NATIONAL STANDARDS COMMISSION

## SUPPLEMENTARY CERTIFICATE OF APPROVAL No S111

This is to certify that the pattern and variants of the  
Toledo Series 0721 Beam Load Cell of 22 kg Capacity  
submitted by Toledo-Berkel Pty Ltd,  
525 Graham Street,  
Port Melbourne, Victoria, 3207,

have been approved under the Weights and Measures (Patterns of Instruments) Regulations as being suitable for use for trade when used in a Commission-approved weighing instrument.

Pattern: approved 17/12/80

. Toledo Series 0721 Beam Load Cell of 22 kg capacity.

Variant: approved 17/12/80

. Of capacities 2 kg, 7 kg, 11 kg, 45 kg and 90 kg.

The pattern and variants are described in Technical Schedule No S111 issued on 27/1/81, and in drawings and specifications lodged with the Commission.

The pattern and variants are subject to review on or after 1/12/83.

### Condition of Approval

1. The number of scale intervals applicable to the whole instrument will be no greater than the number of verified scale intervals approved for the base-work, or the load cell, or the headwork, whichever is the smallest.
2. The load cells shall be subject to regular certification by the National Standards Commission.

All instruments modified in accordance with this Certificate shall be marked with the approval number "NSC No S111", in addition to the approval number of the unmodified pattern.

Signed

Executive Director



# NATIONAL STANDARDS COMMISSION

## TECHNICAL SCHEDULE No S111

Pattern: Toledo Series 0721 Beam Load Cell of 22 kg capacity

Submittor: Toledo-Berkel Pty Ltd,  
525 Graham Street,  
Port Melbourne, Victoria, 3207.

### 1. Description of Pattern

The pattern is a Toledo Series 0721 Beam Load Cell of 22 kg capacity (see Figure 1 and Table 1) assembled in a Commission-approved basework, with the load cell mounted only as below.

#### 1.1 Method of mounting

- (1) Mounting is to be as shown in Figure 2.
- (2) An inspection port is to be provided in proximity to the load cell mounting.

#### 1.2 Marking

The following is the minimum of data required to be permanently marked on the load cell:

Manufacturer's name	
Part number	
Serial number	
Output in the form	mV/V
Maximum rated capacity	

### 2. Description of Variants

#### 2.1 Variant 1

Of capacities 2 kg, 7 kg, 11 kg, 45 kg, and 90 kg(see Table 1).

TABLE 1

Capacity	2 kg	7 kg	11 kg	22 kg	45 kg	90 kg
Max. No. verification scale intervals	4000	4000	4000	4000	4000	4000
Min. dead load	0.1 kg	0.5 kg	1.0 kg	1.5 kg	1.5 kg	1.5 kg
Min. measuring range	0.7 kg	2.5 kg	4.0 kg	9.0 kg	17.0 kg	35.0 kg
Max. measuring range	2.0 kg	7.0 kg	11.0 kg	22.0 kg	45.0 kg	90.0 kg

Toledo Series 0721 Load Cell - approved capacities



NATIONAL STANDARDS COMMISSION

S111  
23/3/87

CANCELLATION CERTIFICATE OF APPROVAL No S111

This is to certify that the approval for use for trade granted in respect of the pattern and variant of the

Toledo Series 0721 Beam Load Cell of 22 kg Capacity

submitted by Toledo-Berkel Pty Ltd  
525 Graham Street  
Port Melbourne Vic 3207

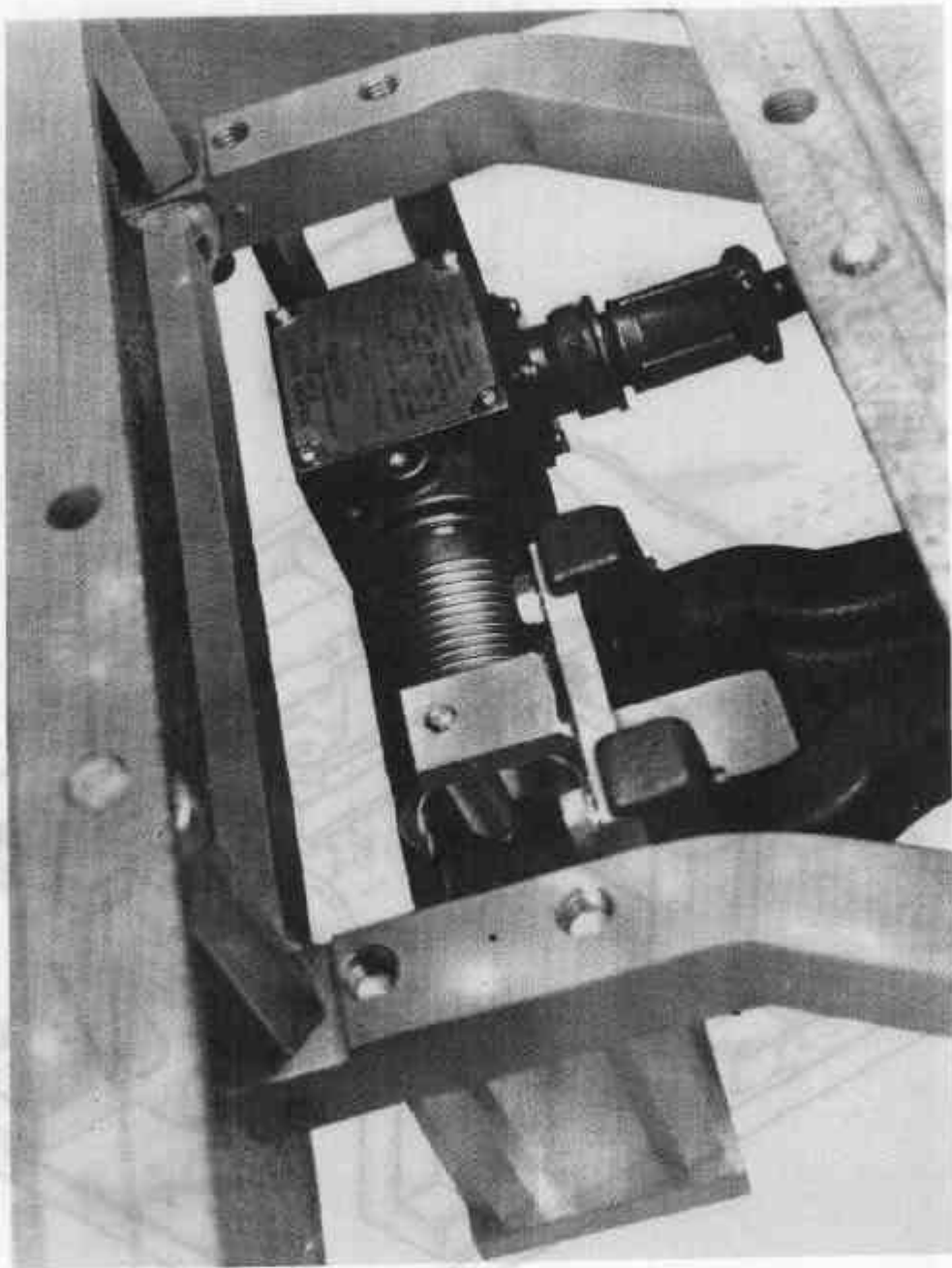
has been cancelled in respect of new instruments as from 1 March 1987.

Instruments which were verified before that date may, with the concurrence of the relevant verifying authority, be submitted for reverification.

Signed

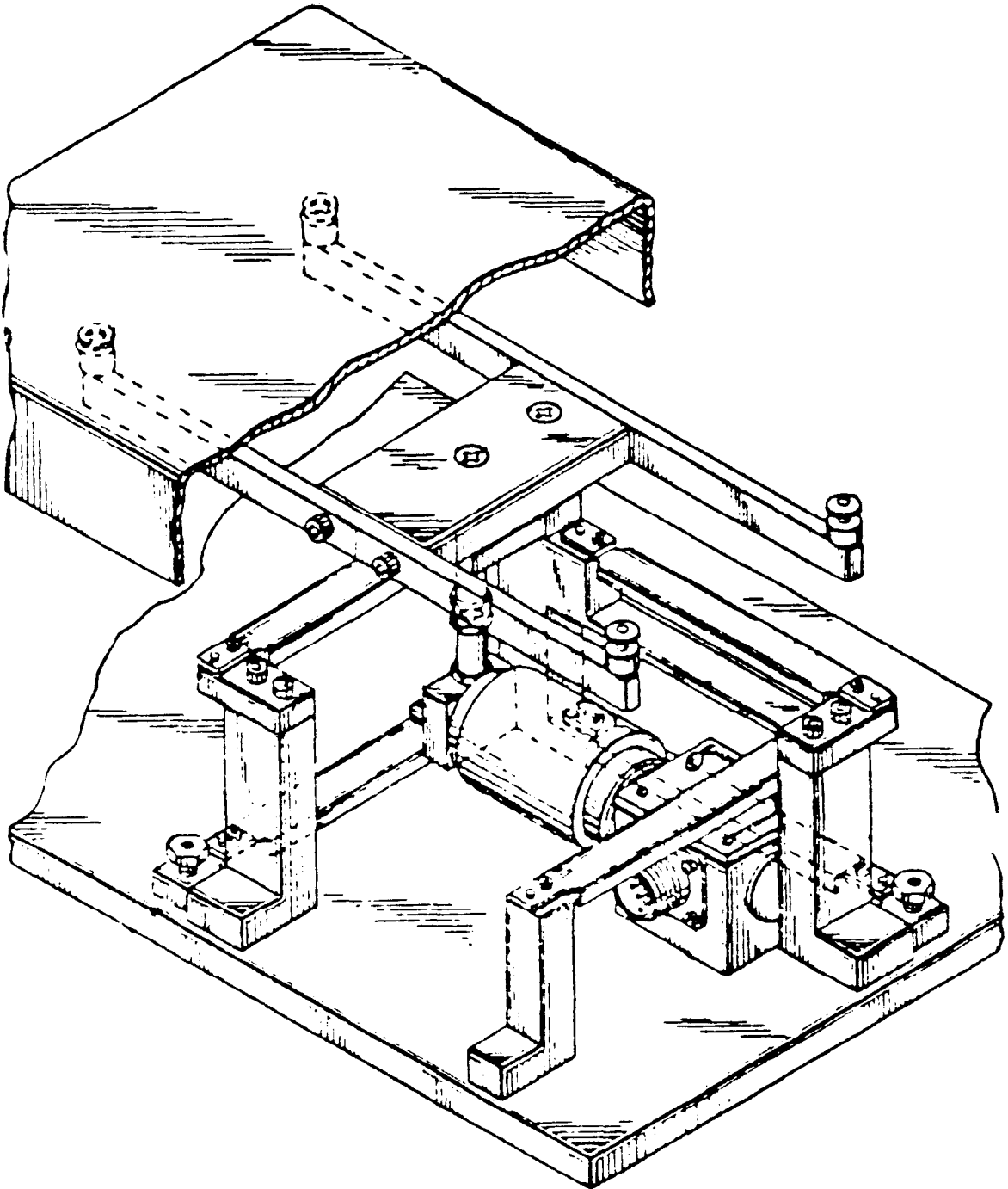
Executive Director

FIGURE S111 - 1



Load Cell in typical mounting

FIGURE S111 - 2



Load Cell mounting - Schematic Drawing

27/1/81