



NATIONAL STANDARDS COMMISSION

NATIONAL MEASUREMENT (PATTERNS OF INSTRUMENTS) REGULATIONS

REGULATION 9

SUPPLEMENTARY CERTIFICATE OF APPROVAL No S189

This is to certify that an approval has been granted that the pattern of the

Acme Model EPU 100 Flowmeter Pulse Generator

submitted by Acme Oil Equipment Services Pty Ltd
Greens Road
Dandenong Vic 3175

is suitable for use for trade.

CONDITIONS OF APPROVAL

General:

This approval is subject to review on or after 1/3/90.

Instruments purporting to comply with this approval shall be marked NSC No S189.

This approval may be withdrawn if instruments are constructed and used other than as described in the drawings and specifications lodged with the Commission.

Special:

Any additional auxiliary devices used with this instrument shall comply with the requirements of General Supplementary Certificate No S1/0.

Signed

Executive Director

Descriptive Advice

- Pattern: approved 1/3/85

- . An Acme model EPU 100 electronic pulse generator for use in a system incorporating a compatible Commission-approved flowmeter and indicator. The instrument is approved for use on mobile or fixed installations.

Technical Schedule No S189 describes the pattern.

Filing Advice

The documentation of this approval comprises:

Certificate of Approval No S189 dated 28/5/85
Technical Schedule No S189 dated 28/5/85
Test Procedure No S189 dated 28/5/85
Figures 1 and 2 dated 28/5/85



NATIONAL STANDARDS COMMISSION

TECHNICAL SCHEDULE No S189

Pattern: Acme Model EPU 100 Flowmeter Pulse Generator

Submittor: Acme Oil Equipment Services Pty Ltd
Greens Road
Dandenong Vic 3175

1. Description of Pattern

An Acme model EPU 100 electronic pulse generator (Figures 1 and 2). The instrument, when interfaced in a system incorporating a compatible Commission-approved flowmeter and indicator, will produce pulses proportional to volume.

1.1 Signal Interface

The interface between the proximity sensor of the EPU 100 pulse generator and the amplifier of a compatible indicator, shall be in accordance with the Circuit Recommendations DIN 19234 and NAMUR.

1.2 Installation

The instrument is mounted directly onto the flowmeter in either a mobile or fixed installation and may be connected to any Commission-approved compatible digital indicator.

Connections of auxiliary devices shall be routed to minimise stray pulse pickups.

1.3 Markings

The instrument is marked with the following data, together in one location:

Manufacturer's name or mark
Model number
Serial number
NSC approval number

NSC No S189

1.4 Verification Provision

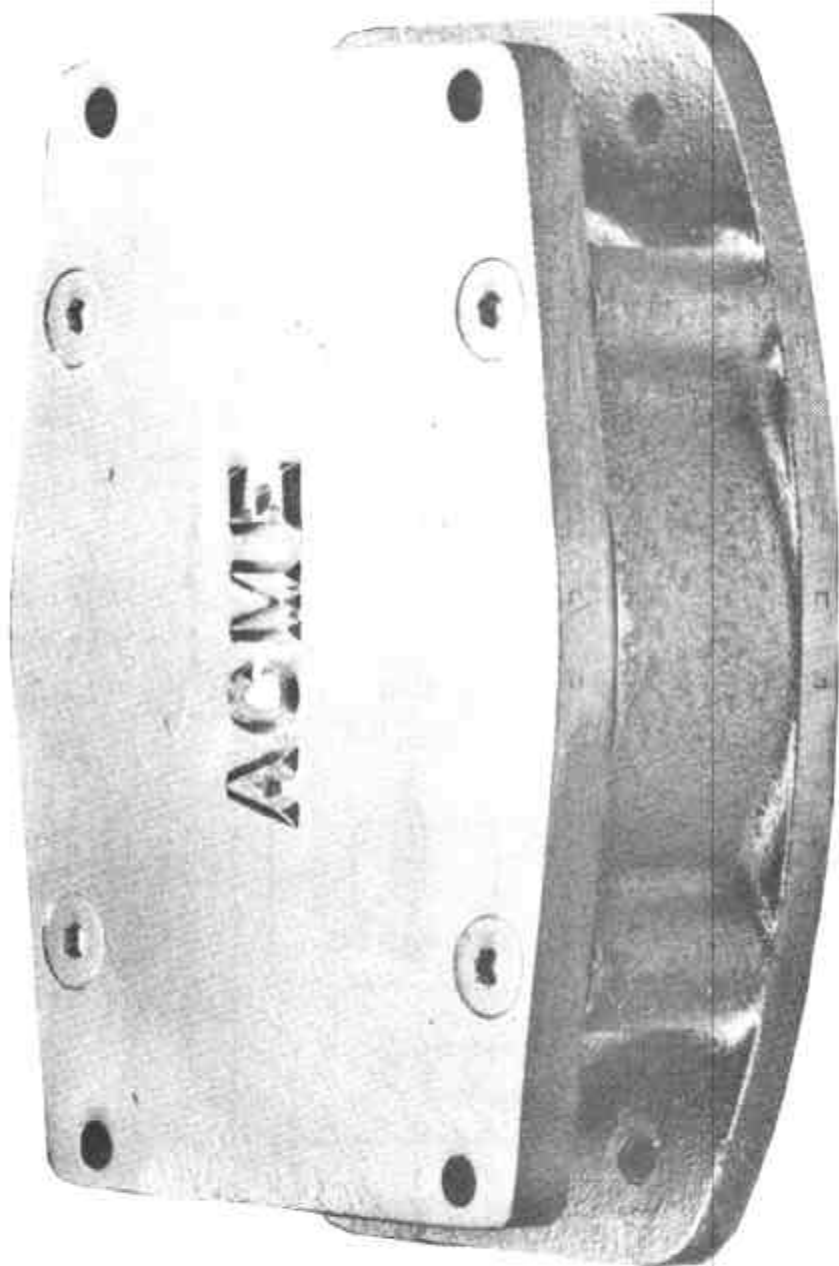
Provision is made for a verification mark to be applied.

TEST PROCEDURE No S189

The effect due to the pulses per revolution of the pulse generator and the flow rate range, shall be considered in conjunction with any tests specified in the approval documentation for the flowmeter to which this instrument is connected.

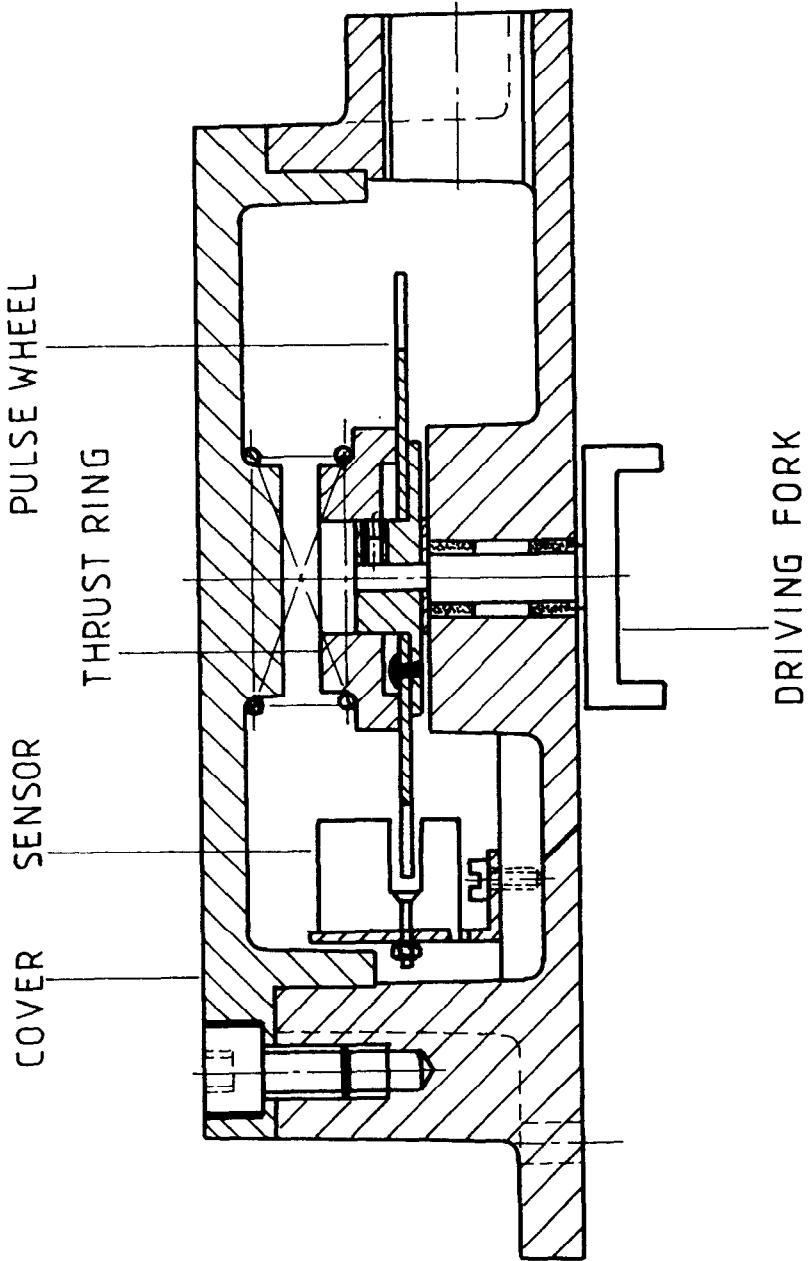
The results shall not exceed the maximum permissible errors specified in Document 118.

FIGURE S189 - 1



Acme EPU 100 Pulse Generator

FIGURE S189 - 2



Schematic of EPU 100 Pulse Generator