



National Standards Commission

12 Lyonpark Road, North Ryde NSW

Cancellation Supplementary Certificate of Approval No S189A

This is to certify that the approval for use for trade granted in respect of the

Acme Model EPU 100 Flowmeter Pulse Generator

submitted by Acme Fluid Handling Pty Ltd
 32 Greens Road
 Dandenong VIC 3175

has been cancelled in respect of new instruments as from 1 October 2000.

Instruments which were verified/certified before that date may, with the concurrence of the relevant verifying authority, be submitted for reverification.

Signed by a person authorised under Regulation 63 of the National Measurement Regulations 1999 to exercise the powers and functions of the Commission under this Regulation.

National Standards Commission



Supplementary Certificate of Approval

No S189A

Issued under Regulation 9
of the
National Measurement (Patterns of Instruments) Regulations

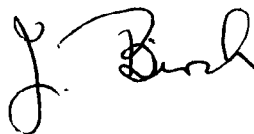
This is to certify that an approval for use for trade has been granted in respect of the

Acme Model EPU 100 Flowmeter Pulse Generator

submitted by Acme Fluid Handling Pty Ltd
Lot 1, Greens Road
Dandenong VIC 3175.

This Certificate is issued upon completion of a review of NSC approval No S189.

Signed and sealed by a person authorised under Regulation 9 of the National Measurement (Patterns of Instruments) Regulations to exercise the powers and functions of the Commission under this Regulation.



CONDITIONS OF APPROVAL

This approval is subject to review on or after 1/6/96.

This approval expires in respect of new instruments on 1/6/97.

Instruments purporting to comply with this approval shall be marked NSC No S189A and only by persons authorised by the submittor.

Instruments incorporating a component purporting to comply with this approval shall be marked NSC No S189A in addition to the approval number of the instrument.

It is the submittor's responsibility to ensure that all instruments marked with this approval number are constructed as described in the drawings and specifications lodged with the Commission and with the relevant Certificate of Approval and Technical Schedule. Failure to comply with this Condition may attract penalties under Section 19B of the National Measurement Act and may result in cancellation or withdrawal of the approval, in accordance with the Commission's Document 106.

Auxiliary devices used with this instrument shall comply with the requirements of General Supplementary Certificate No S1/0.

The Commission reserves the right to examine any instrument or component of an instrument purporting to comply with this approval.

DESCRIPTIVE ADVICE

Pattern: approved 30/5/91

. An Acme model EPU 100 electronic flowmeter pulse generator.

Technical Schedule No S189A describes the pattern.

FILING ADVICE

The documentation for this approval comprises:

Supplementary Certificate of Approval No S189A dated 10/7/91
Technical Schedule No S189A dated 10/7/91 (incl. Test Procedure)
Figures 1 and 2 dated 10/7/91



National Standards Commission

TECHNICAL SCHEDULE No S189A

Pattern: Acme Model EPU 100 Flowmeter Pulse Generator.

Submittor: Acme Fluid Handling Pty Ltd
Lot 1, Greens Road
Dandenong VIC 3175.

1. Description of Pattern

The pattern is an Acme model EPU 100 electronic pulse generator (Figures 1 and 2) which will produce pulses proportional to volume when interfaced with a compatible Commission-approved positive displacement flowmeter.

1.1 Signal Interface

The interface between the proximity sensor of the EPU 100 and the amplifier of a compatible indicator, shall be as per the manufacturer's instructions and in accordance with the Circuit Recommendations DIN 19234 and NAMUR.

The pulse generator output is 15 pulses/revolution.

1.2 Installation

Instruments are mounted on the output shaft of a positive displacement flowmeter.

Connections of auxiliary devices shall be routed to minimise stray pulse pickups.

1.3 Markings

Instruments are marked with the following data, together in one location:

Manufacturer's name or mark

Model number

Serial number

Approval number

NSC No S189A

1.4 Verification/Certification Provision

Provision is made for a verification/certification mark to be applied.

TEST PROCEDURE

Instruments shall be tested in conjunction with any tests specified in the approval documentation for the instrument to which the pattern is connected, as appropriate, and in accordance with any relevant tests specified in the Inspector's Handbook.

The maximum permissible errors applicable are those applicable to the system to which the instrument approved herein is fitted, as stated in the approval documentation for the system.

National Standards Commission



Notification of Change Supplementary Certificate of Approval No S189A Change No 1

The following change is made to the approval documentation for the

Acme Model EPU 100 Flowmeter Pulse Generator

submitted by Acme Fluid Handling Pty Ltd
 32 Greens Road
 Dandenong VIC 3175.

In Supplementary Certificate of Approval No S189A dated 10 July 1991, the Condition of Approval referring to the expiry of the approval should be amended to read:

“This approval expires in respect of new instruments on 1 June 1998.”

Signed and sealed by a person authorised under Regulation 9 of the National Measurement (Patterns of Measuring Instruments) Regulations to exercise the powers and functions of the Commission under this Regulation.



National Standards Commission
Notification of Change
Supplementary Certificate of Approval No S189A
Change No 2

The following change is made to the approval documentation for the

Acme Model EPU 100 Flowmeter Pulse Generator

submitted by Acme Fluid Handling Pty Ltd
32 Greens Road
Dandenong VIC 3175.

In Supplementary Certificate of Approval No S189A dated 10 July 1991, the Condition of Approval referring to the expiry of the approval (previously amended by Notification of Change No 1 dated 14 July 1997), should now be deleted.

Signed and sealed by a person authorised under Regulation 9 of the National Measurement (Patterns of Measuring Instruments) Regulations to exercise the powers and functions of the Commission under this Regulation.

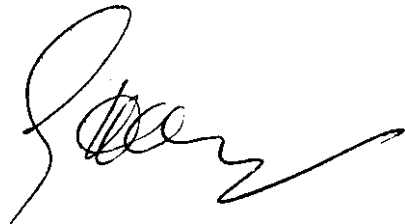
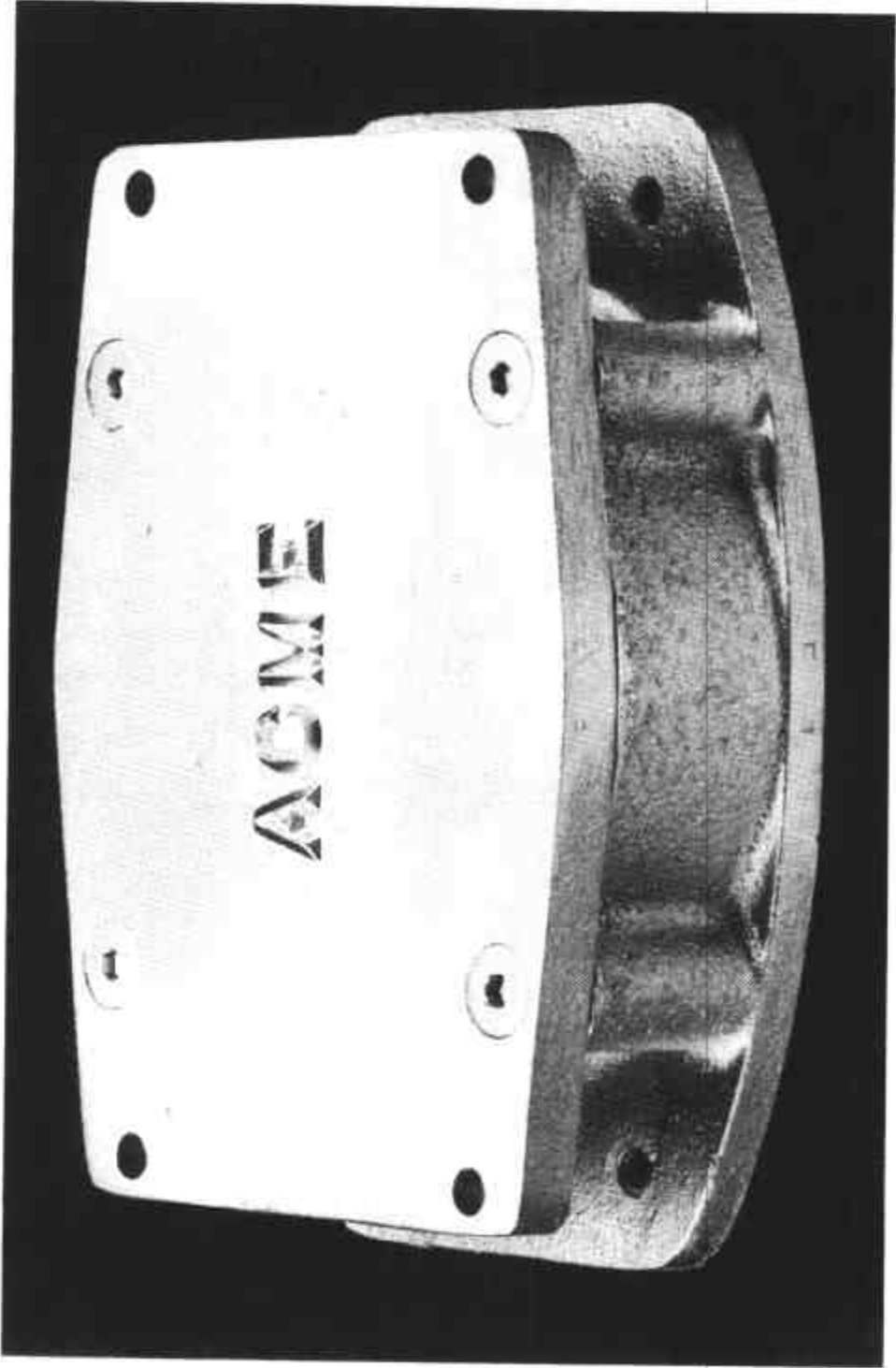
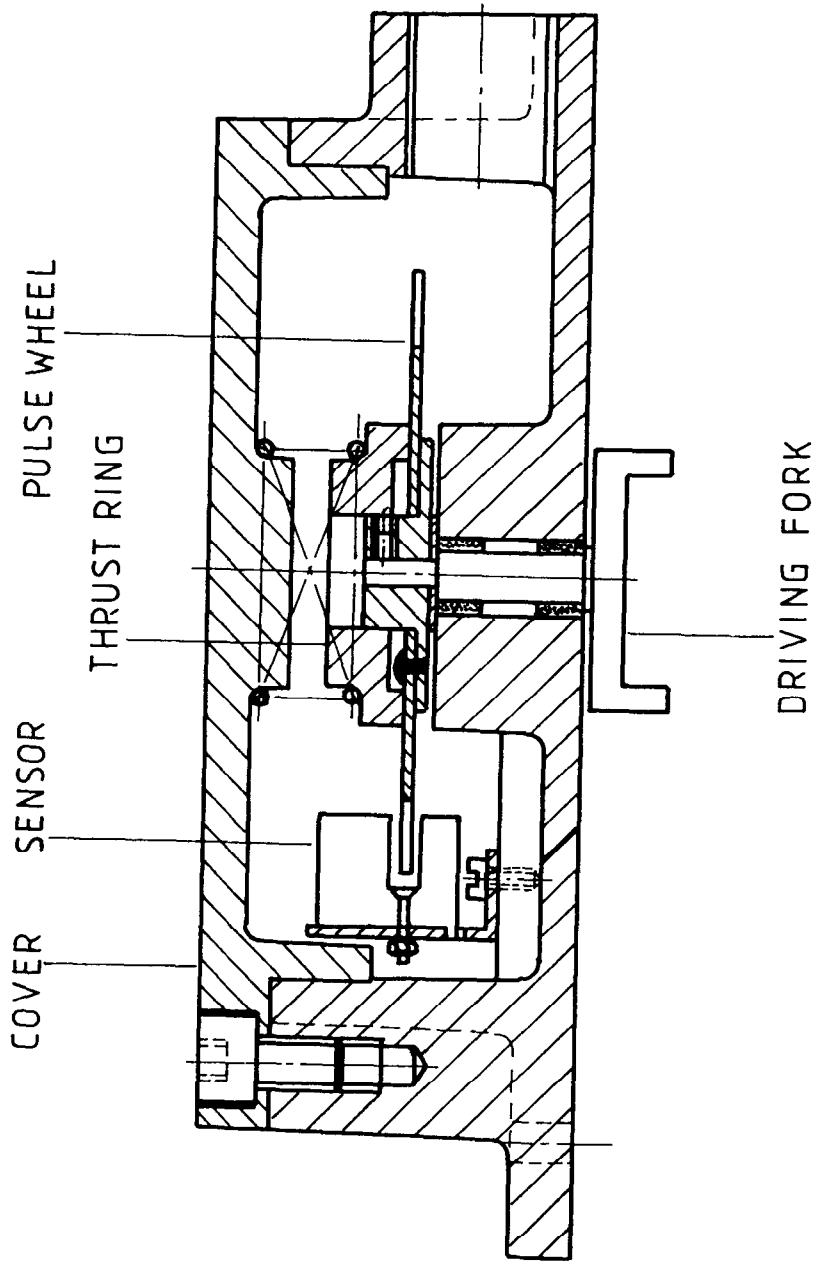


FIGURE S189A - 1



Acme Model EPU 100 Pulse Generator

FIGURE S189A - 2



Schematic of EPU 100 Pulse Generator