



NATIONAL STANDARDS COMMISSION

S198
6/3/89

NATIONAL MEASUREMENT (PATTERNS OF INSTRUMENTS) REGULATIONS

REGULATION 9

SUPPLEMENTARY CERTIFICATE OF APPROVAL No S198

This is to certify that an approval for use for trade has been granted in respect of the pattern and variants of the

Gilbarco Model Datapump Driveway Flowmeter Control System

submitted by Gilbarco Aust. Ltd
12-38 Talavera Road
North Ryde NSW 2113.

CONDITIONS OF APPROVAL

General:

This approval is subject to review on or after 1/8/90.
This approval expires in respect of new instruments on 1/8/91.

Instruments purporting to comply with this approval shall be marked NSC No S198.

This approval may be withdrawn if instruments are constructed other than as described in the drawings and specifications lodged with the Commission.

Auxiliary devices used with this instrument shall comply with the requirements of General Supplementary Certificates Nos S1/0 and/or S2/0, as appropriate.

Special:

Instruments are only approved for installations incorporating the Commission-approved driveway flowmeter systems described in this approval.

Signed

Executive Director

Descriptive Advice

Pattern: approved 18/7/85

- Gilbarco model Datapump card-operated driveway flowmeter control system.

Variants: approved 18/7/85

1. With a model T084F manually-operated card-acceptor terminal.
2. With a model T084M controller which may control up to 3 card-acceptor terminals.

...../2

Supplementary Certificate of Approval No S198 Page 2

Variant: approved 23/8/88

3. With a model T084T controller and one or more T084S card-acceptor terminals.

Technical Schedule No S198 describes the pattern and variants 1 to 3.

Variant: approved 12/1/89

4. With a model T084M or T084P controller and one or more T084B or T084F card-acceptor terminals.

Technical Schedule No S198 Variation No 1 describes variant 4.

Filing Advice

Supplementary Certificate of Approval No S198 dated 14/10/88 is superseded by this Certificate and may be destroyed.

Notification of Change

In Figure 4 dated 14/10/88 the caption referring to the number of flowmeters should be amended by removing "up to 4".

The documentation for this approval now comprises:

- Supplementary Certificate of Approval No S198 dated 6/3/89
- Technical Schedule No S198 dated 14/10/88
- Technical Schedule No S198 Variation No 1 dated 6/3/89
- Test Procedure No S198 dated 14/10/88
- Figures 1 to 7 dated 14/10/88
- Figure 8 dated 6/3/89



TECHNICAL SCHEDULE No S198

Pattern: Gilbarco Model Datapump Driveway Flowmeter Control System.

Submitter: Gilbarco Aust. Ltd
12-38 Talavera Road
North Ryde NSW 2113.

1. Description of Pattern

The pattern is a Gilbarco Datapump card-operated driveway flowmeter control system which allows account transactions to be made locally using authorised cards having controlled distribution i.e. cards issued to selected users.

The system comprises:

- (a) A Datapump T084B card-acceptor terminal (Island Card Reader or ICR).
- (b) A Datapump T084P controller.
- (c) Up to 4 compatible Commission-approved Gilbarco driveway flowmeters or compatible Commission-approved driveway flowmeters fitted with Commission-approved Calcopac indicators.
- (d) A communication interconnection box.

Figure 3 shows the interconnection of the major components for the pattern and variant 1.

1.1 Datapump Island Card Reader (ICR)

The model T084B ICR (Figure 1) has the following features:

- (a) An alphanumeric display used to generate prompts to guide the user through data entry functions.
- (b) A keyboard with 10 numeric keys and other special function keys e.g. CLEAR, CLEAR LAST ENTRY, ENTER, YES or NO.
- (c) A motorised card-acceptor into which the authorised card is inserted.
- (d) A ticket printer and internal journal printer.

Access to the managerial and service functions are available only to authorised personnel and are described in the manuals.

All transactions on the Datapump system are recorded internally.

All transaction data is recorded on the purchaser's receipt which is issued by re-inserting the card at the end of a delivery. Data for up to the last 8 receipts is stored within the system.

1.2 Datapump Controller

The model T084P unit (Figure 2) controls the system including the ICR and may be interfaced with up to 4 compatible Commission-approved Gilbarco driveway flowmeters or compatible Commission-approved driveway flowmeters fitted with Commission-approved Calcopac indicators. The controller may be located remotely or with the ICR.

1.3 Communication Interconnection Box

This allows the operator to disconnect any of the driveway flowmeters from the controller. The time of connection or disconnection is recorded on the journal roll.

1.4 Operating Procedure

- (a) Insert authorised card or cards into the ICR.
- (b) Enter personal identification number (PIN) (optional).
- (c) Enter the driveway flowmeter number.
- (d) The card is then returned and a delivery may be made.
- (e) After nozzle hang-up, the internal record is printed and a ticket is made available by re-inserting the card.

NOTE:

The authorised card(s) may contain restrictions and special conditions e.g. limits on the type and/or amount of fuel that a user may obtain, which may vary with the type of card and account transaction utilised.

1.5 Markings

The card terminal and the controller are marked with the following data:

| | |
|-----------------------------|-------------|
| Manufacturer's name or mark | |
| Serial number | |
| Model | |
| NSC approval number | NSC No S198 |
| Year of manufacture | |

In addition, the card terminal shall indicate to the user that it is necessary to re-insert the card, after nozzle hang-up, to obtain a ticket.

1.6 Verification Provision

Provision is made for a verification mark to be applied on the card terminal, and on the controller.

2. Description of Variants

2.1 Variant 1

With a manually-operated card-acceptor terminal in which case the ICR is known as a model T084F.

2.2 Variant 2

With a model T084M controller interfaced with up to 12 compatible Commission-approved Gilbarco driveway flowmeters or compatible Commission-approved driveway flowmeters fitted with Commission-approved Calcopac indicators.

The T084M controller may be used with up to 3 model T084B or T084F card-acceptor terminals.

Figure 4 shows the interconnection of the major components for this variant.

2.3 Variant 3

With a model T084T controller (similar to the unit shown in Figure 2) connected to one or more T084S card-acceptor terminals (Figure 7) with manually-operated swipe card reader, two alphanumeric keyboards and also with electronic funds transfer (EFT) facility.

Figures 5 and 6 show the interconnection of the major components for this variant.

This variant may be used with:

- (a) Compatible Commission-approved Gilbarco driveway flowmeters; or
- (b) Compatible Commission-approved driveway flowmeters fitted with Commission-approved Calcopac indicators; or
- (c) Any Commission-approved Gilbarco control console in a Commission-approved driveway flowmeter control system, in which case the instrument permits remote authorisation of any of the driveway flowmeters controlled by the console, with the number and type of driveway flowmeters limited by the capability of the console to which this variant is connected.



TEST PROCEDURE No S198

The following tests should be conducted in conjunction with any tests specified in the approval documentation for the driveway flowmeter systems to which this instrument is connected and in conjunction with any relevant tests in the Inspector's Handbook. The results shall not exceed the maximum permissible errors as specified in Document 118, Second Edition, October 1986.

1. Check that the allocated driveway flowmeters are only controlled by the Datapump card terminal and are identified.
2. Complete at least two deliveries and check that the vendors and the purchasers records of transaction are identical to that of the display on the driveway flowmeter.

NOTE: In the event of power failure, the details printed on the ticket may differ from those displayed on the driveway flowmeter and in addition, the ticket shall be printed with the following:

POWER FAILURE

RECEIPT IS CORRECT
RECORD OF TRANSACTION

3. For Variant 3;
 - (a) Turn the T084T controller's keyswitch to the MANAGER position.
 - (b) Select function '9' on the thumbwheel, and press the test button.
 - (c) Turn the keyswitch back to the NORMAL position.
 - (d) Swipe the RETAILER card through the ICR card reader.

NOTE: The card must be swiped within 60 seconds of pressing the test button and the ICR display showing PLEASE SWIPE YOUR CARD THROUGH READER, or the card will be rejected. If the time limit is exceeded, repeat steps (a) to (d).

- (e) Follow instructions on the ICR to make a delivery of fuel. Any personal identification number (PIN) or account type may be used.
- (f) Check that the vendors and the purchasers records of transaction are identical to that of the display on the driveway flowmeter.



TECHNICAL SCHEDULE No S198

VARIATION No 1

Pattern: Gilbarco Model Datapump Driveway Flowmeter Control System.

Submittor: Gilbarco Aust. Ltd
12-38 Talavera Road
North Ryde NSW 2113.

1. Description of Variant 4

With a model T084M or T084P controller connected to one or more T084B or T084F card-acceptor terminals (Figure 1) with any Commission-approved Gilbarco control console in a Commission-approved driveway flowmeter control system, in which case the instrument permits remote authorisation of any of the driveway flowmeters controlled by the console, with the number and type of driveway flowmeters limited by the capability of the console to which this variant is connected.

Figure 8 shows the interconnection of the major components for this variant.



NATIONAL STANDARDS COMMISSION

S198
7/11/86

NOTIFICATION OF CHANGE

SUPPLEMENTARY CERTIFICATE OF APPROVAL No S198

CHANGE No 1

The following changes are made to the approval documentation for the
Gilbarco Model Datapump Driveway Flowmeter Control System

submitted by Gilbarco Aust. Ltd
12-38 Talavera Road
North Ryde NSW 2113.

In Technical Schedule No S198 dated 20/11/85;

1. Amend clause 1. Description of Pattern item (c) to read:

"Up to 4 compatible Commission-approved Gilbarco driveway flowmeters or compatible Commission-approved driveway flowmeters fitted with Calcopac indicators."

2. Amend clause 1.2 Datapump Control Unit to read, in part:

"... interfaced with up to 4 compatible Commission-approved Gilbarco driveway flowmeters or compatible Commission-approved driveway flowmeters fitted with Calcopac indicators."

3. Amend clause 2.2 Variant 2 to read, in part:

"... controlling up to 4 compatible Commission-approved Gilbarco driveway flowmeters or compatible Commission-approved driveway flowmeters fitted with Calcopac indicators."

Signed

A handwritten signature in black ink, appearing to read 'J. Birch'.

Executive Director



NATIONAL STANDARDS COMMISSION

S198
27/4/87

NOTIFICATION OF CHANGE

SUPPLEMENTARY CERTIFICATE OF APPROVAL No S198

CHANGE No 2

The following changes are made to the approval documentation for the
Gilbarco Model Datapump Driveway Flowmeter Control System

submitted by Gilbarco Aust. Ltd
12-38 Talavera Road
North Ryde NSW 2113.

Note: This Notification of Change replaces Change No 1 dated 7/11/86.

In Technical Schedule No S198 dated 20/11/85;

1. Amend clause 1. Description of Pattern item (c) to read:

"Up to 4 compatible Commission-approved Gilbarco driveway flowmeters or compatible Commission-approved driveway flowmeters fitted with Commission-approved Calcopac indicators."

2. Amend clause 1.2 Datapump Control Unit to read, in part:

"... interfaced with up to 4 compatible Commission-approved Gilbarco driveway flowmeters or compatible Commission-approved driveway flowmeters fitted with Commission-approved Calcopac indicators."

3. Amend clause 2.2 Variant 2 to read:

"With a model T084M controller interfaced with up to 12 compatible Commission-approved Gilbarco driveway flowmeters or compatible Commission-approved driveway flowmeters fitted with Commission-approved Calcopac indicators.

The T084M controller may be used with up to 3 model T084B or T084F card readers."

Signed

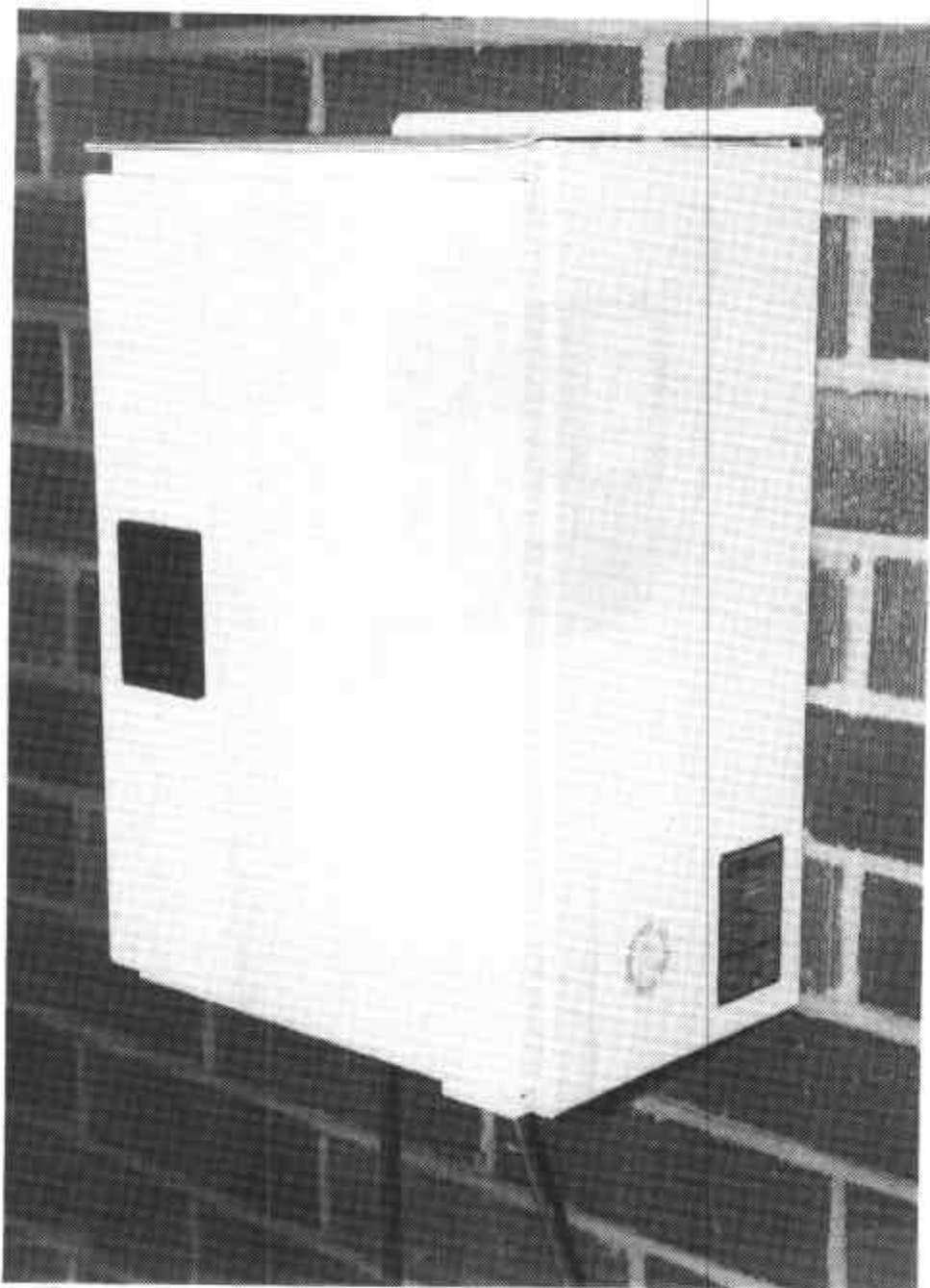
Executive Director

FIGURE S198 - 1



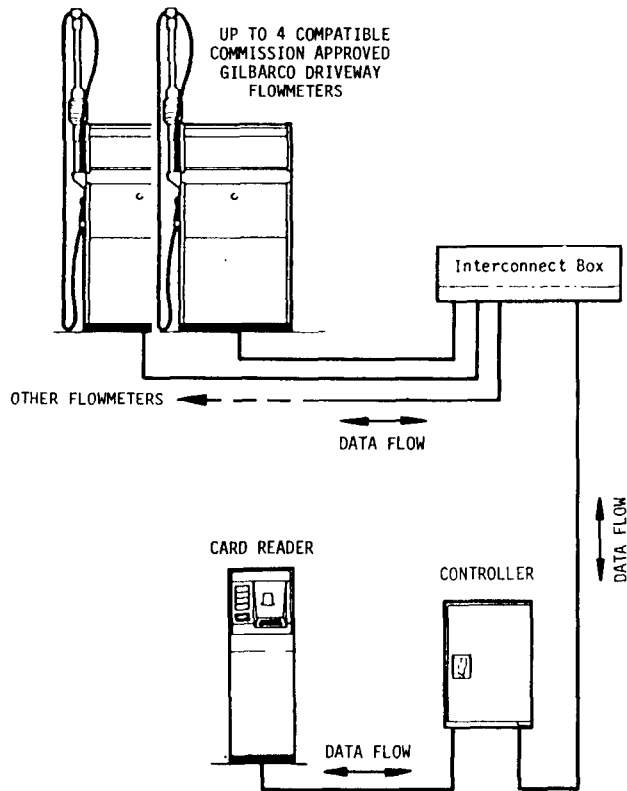
Gilbarco Datapump Card-acceptor Terminal

FIGURE S198 - 2



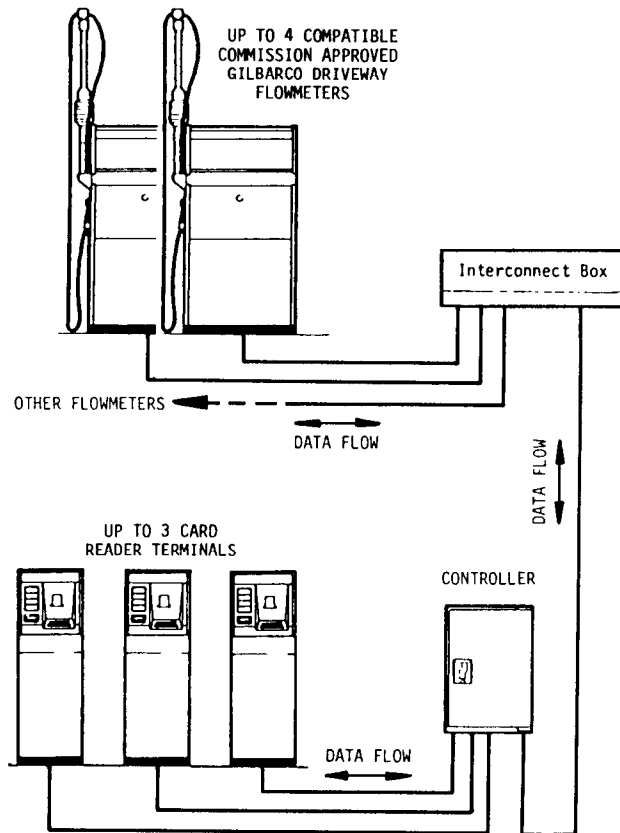
Datapump Controller

FIGURE S198 - 3



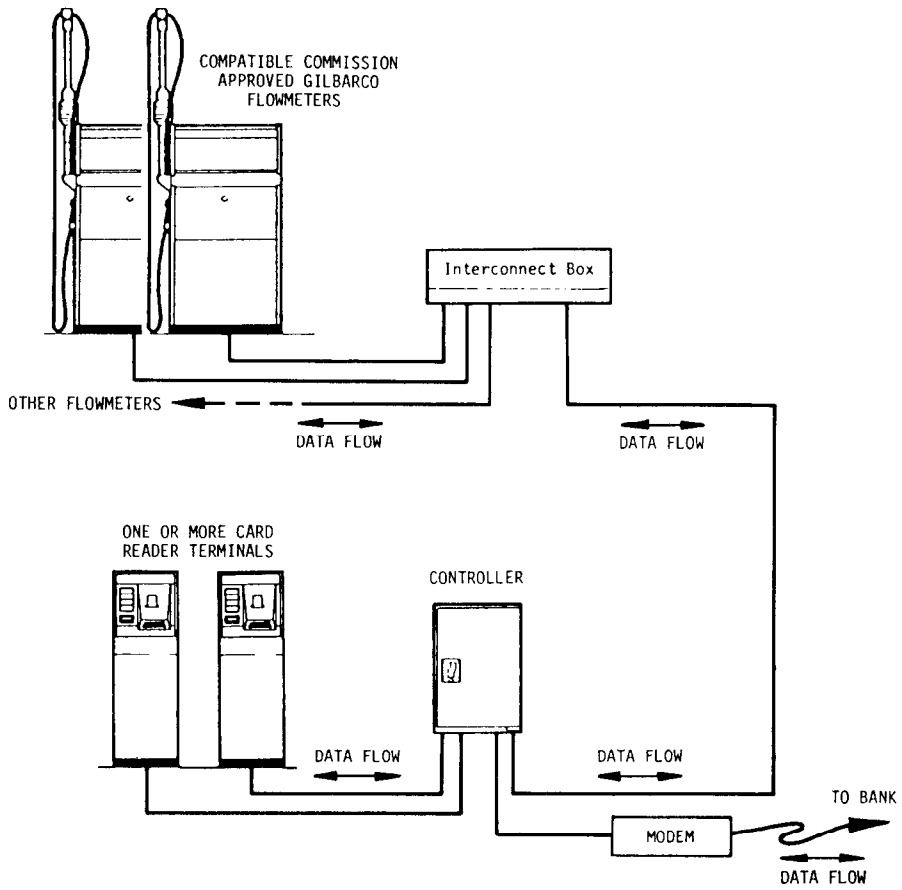
Schematic - Pattern And Variant 1

FIGURE S198 - 4



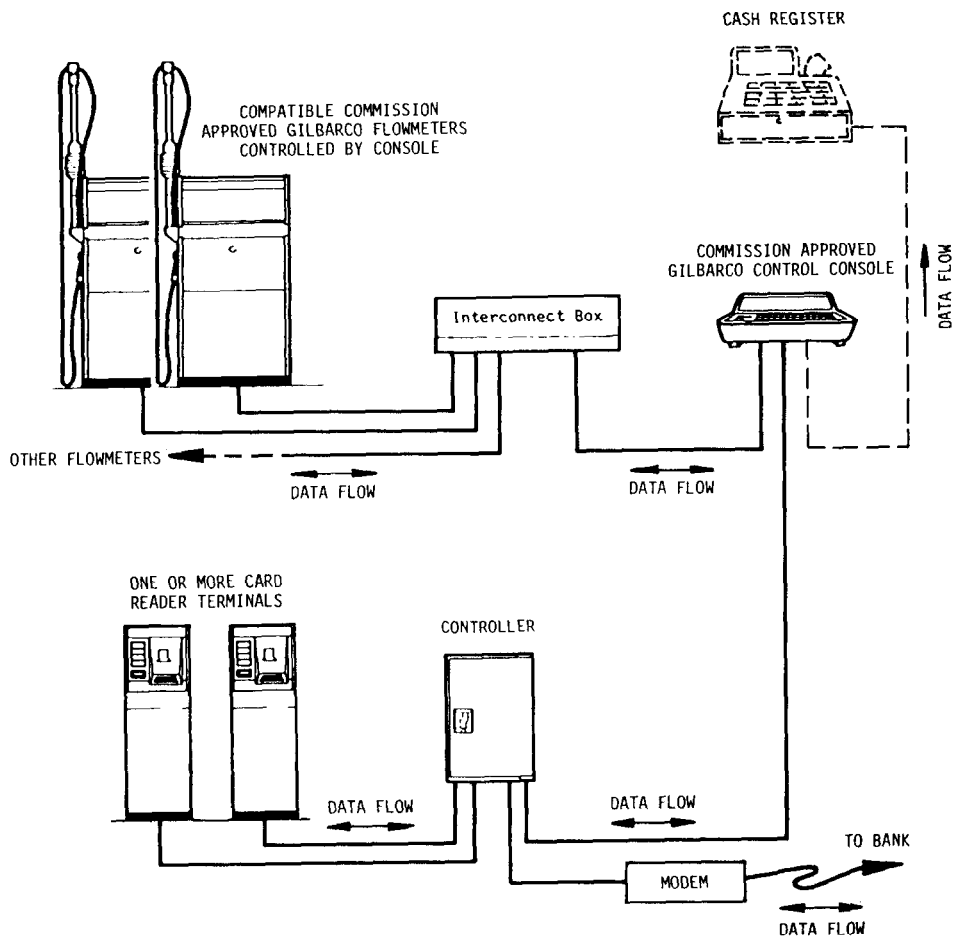
Schematic - Variant 2

FIGURE S198 - 5



Schematic - Variant 3 (Without Console)

FIGURE S198 - 6



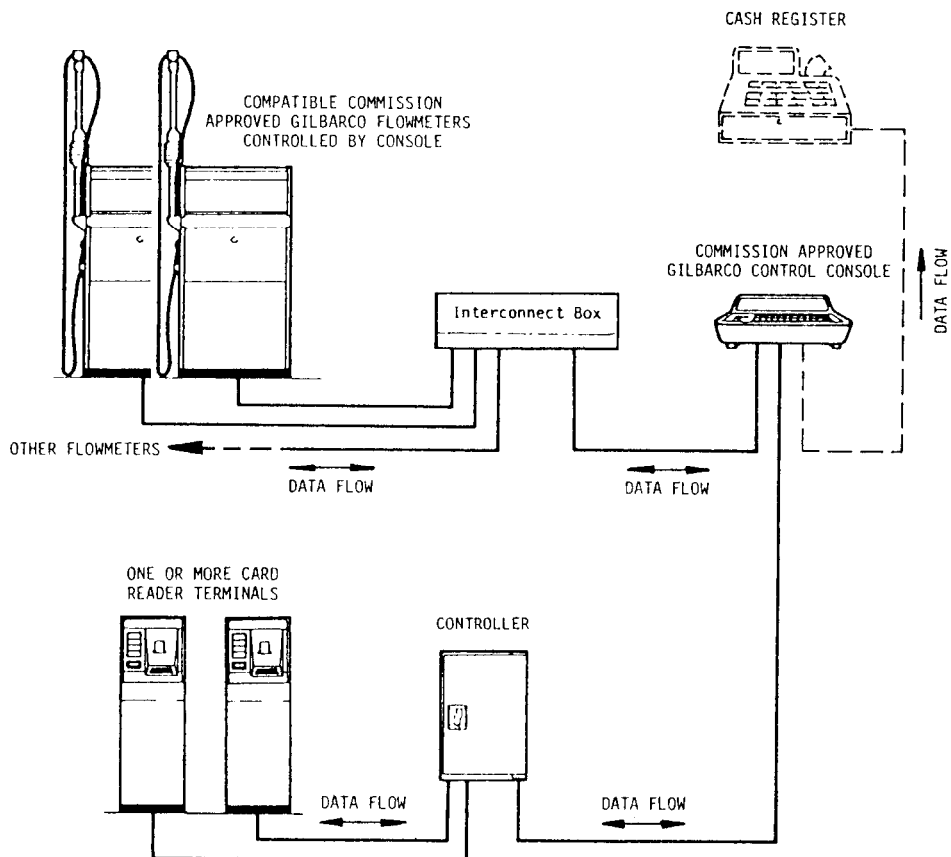
Schematic - Variant 3 (With Console)

FIGURE S198 - 7



Gilbarco T084S Card-acceptor Terminal

FIGURE S198 - 8



Schematic - Variant 4