



Australian Government

**National Measurement
Institute**

12 Lyonpark Road, North Ryde NSW 2113

Cancellation
Supplementary Certificate of Approval
No S252A

Issued by the Chief Metrologist under Regulation 60
of the
National Measurement Regulations 1999

This is to certify that the approval for use for trade granted in respect of the

Mettler Toledo Model 0760 Load Cells

submitted by Mettler Toledo Limited
now of 220 Turner Street
PORT MELBOURNE VIC 3207

has been cancelled in respect of new instruments as from 1 May 2006.

Signed by a person authorised by the Chief Metrologist
to exercise his powers under Regulation 60 of the
National Measurement Regulations 1999.

A handwritten signature in black ink, appearing to be 'J. G. T.', written in a cursive style.

National Standards Commission



Supplementary Certificate of Approval

No S252A

Issued under Regulation 9
of the
National Measurement (Patterns of Measuring Instruments) Regulations

This is to certify that an approval for use for trade has been granted in respect of the

Mettler Toledo Model 0760 Load Cell

submitted by Mettler Toledo Limited
 525 Graham Street
 Port Melbourne VIC 3207.

NOTE: This Certificate relates to the suitability of the pattern of the instrument for use for trade only in respect of its metrological characteristics. This Certificate does not constitute or imply any guarantee of compliance by the manufacturer or any other person with any requirements regarding safety.

CONDITIONS OF APPROVAL

This approval becomes subject to review on 1 December 1999, and then every 5 years thereafter.

Instruments purporting to comply with this approval shall be marked NSC No S252A and only by persons authorised by the submittor.

Instruments incorporating a component purporting to comply with this approval shall be marked NSC No S252A in addition to the approval number of the instrument.

It is the submitter's responsibility to ensure that all instruments marked with this approval number are constructed as described in the documentation lodged with the Commission and with the relevant Certificate of Approval and Technical Schedule. Failure to comply with this Condition may attract penalties under Section 19B of the National Measurement Act and may result in cancellation or withdrawal of the approval, in accordance with the Commission's Document 106.

The values of the performance criteria (maximum number of scale intervals etc.) applicable to an instrument incorporating the pattern approved herein shall be within the limits specified herein and in any approval documentation for the other components.

The Commission reserves the right to examine any instrument or component of an instrument purporting to comply with this approval.

Special:

These load cells shall only be used with a Mettler Toledo indicator which is Commission-approved for use with Mettler Toledo 'DigiTol' load cells.

DESCRIPTIVE ADVICE

Pattern: approved 18 November 1994

- A Mettler Toledo model 0760 load cell of 22 700 kg maximum capacity.

Technical Schedule No S252A describes the pattern.

Variant: approved 7 October 1996

1. Of 45 000 kg maximum capacity.

Technical Schedule No S252A Variation No 1 describes variant 1.

FILING ADVICE

Supplementary Certificate of Approval No S252A dated 21 June 1996 is superseded by this Certificate, and may be destroyed.

The documentation for this approval now comprises:

- Supplementary Certificate of Approval No S252A dated 30 December 1996
- Technical Schedule No S252A dated 21 June 1996 (incl. Table 1 & Test Procedure)
- Technical Schedule No S252A Variation No 1 (incl. Table 2) dated 30 December 1996
- Figures 1 and 2 dated 21 June 1996

Signed and sealed by a person authorised under Regulation 9 of the National Measurement (Patterns of Instruments) Regulations to exercise the powers and functions of the Commission under this Regulation.



National Standards Commission

TECHNICAL SCHEDULE No S252A

Pattern: Mettler Toledo Model 0760 ('DigiTol') Load Cell.

Submittor: Mettler Toledo Limited
525 Graham Street
Port Melbourne VIC 3207.

1. Description of Pattern

The pattern is a Mettler Toledo model 0760 ('Digitol') load cell of 22 700 kg maximum capacity (refer Figure 1 and Table 1).

These load cells shall only be used with a Mettler Toledo indicator which is Commission-approved for use with Mettler Toledo 'DigiTol' load cells.

1.1 Method of Mounting

Mounting is to be in accordance with the manufacturer's instructions and as shown in Figure 2.

1.2 Markings

The following is the minimum data required to be marked on the load cells:

Manufacturer's name or mark	
Model number	
Serial number	
NSC approval number	NSC No S252A
Maximum rated capacity	

TABLE 1

Type: Mettler Toledo 0760

Part number	14002400A	14002300A
Maximum capacity	22 700 kg	22 700 kg
Maximum number of verification scale intervals	4000	3000
Minimum value of verification scale interval	2.5 kg	3.045 kg
Minimum dead load output return for multi-range instruments (DR)	1.3 kg	1.3 kg

National Standards Commission

TECHNICAL SCHEDULE No S252A VARIATION No 1

Pattern: Mettler Toledo Model 0760 Load Cell.

Submittor: Mettler Toledo Limited
525 Graham Street
Port Melbourne VIC 3207.

1. Description of Variant 1

A Mettler Toledo model 0760 load cell of 45 000 kg maximum capacity (refer Table 2).

TABLE 2

Type:	Mettler Toledo Model 0760	
Maximum capacity		45 000 kg
Maximum number of verification scale intervals		3000
Minimum value of verification scale interval		5.72 kg
Minimum deadload output return for multi-range instruments (DR)		3.75 kg



National Standards Commission

12 Lyonpark Road, North Ryde NSW

Notification of Change

Certificate of Approval No S252A

Change No 1

The following changes are made to the approval documentation for the

Mettler Toledo Model 0760 Load Cells

submitted by Mettler Toledo Limited
525 Graham Street
Port Melbourne VIC 3207.

In Certificate of Approval No S252A dated 30 December 1996;

1. The Condition of Approval referring to the review of the approval should be amended to read:
"This approval becomes subject to review on 1 December 2005, and then every 5 years thereafter."
2. The FILING ADVICE should be amended by removing the inclusion of a Test Procedure in the reference to Technical Schedule No S252A dated 21 June 1996.

Signed by a person authorised under Regulation 63 of the National Measurement Regulations 1999 to exercise the powers and functions of the Commission under this Regulation.

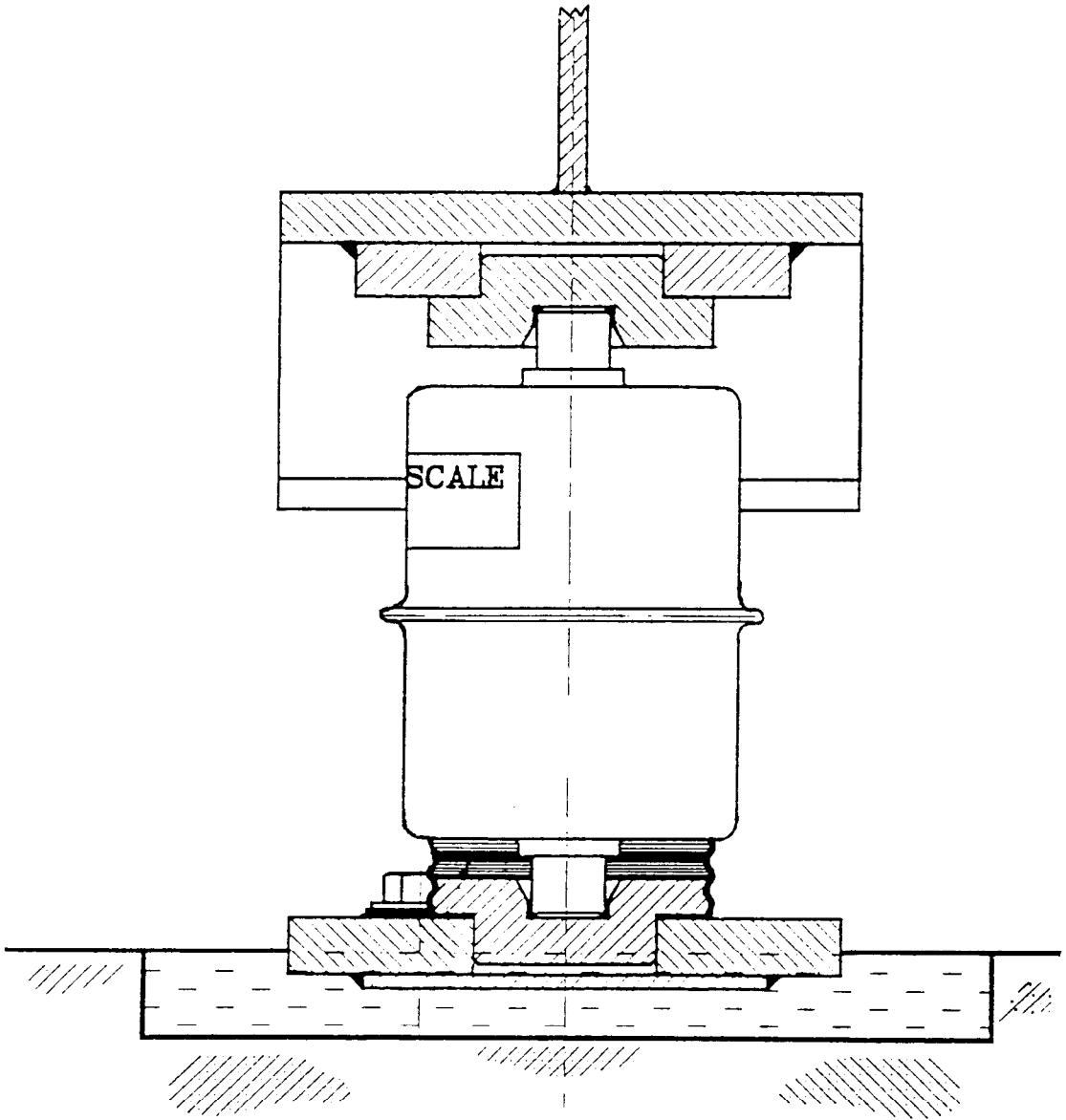
A handwritten signature in black ink, appearing to read 'Jim Bennett'.

FIGURE S252A - 1



Mettler Toledo Model 0760 Load Cell

FIGURE S252A - 2



Typical Mounting Method