

National Standards Commission



Supplementary Certificate of Approval No S258

Issued under Regulation 9
of the
National Measurement (Patterns of Instruments) Regulations

This is to certify that an approval for use for trade has been granted in respect of the

Revere Model CSP-M-40t-C3-SC Load Cell

submitted by Revere Transducers Europe
Schapenweide 50
NL-4824 HX Breda
Holland.

Signed and sealed by a person authorised under Regulation 9 of the National Measurement (Patterns of Instruments) Regulations to exercise the powers and functions of the Commission under this Regulation.



CONDITIONS OF APPROVAL

This approval is subject to review on or after 1/10/94.
This approval expires in respect of new instruments on 1/10/95.

Instruments purporting to comply with this approval shall be marked NSC No S258 and only by persons authorised by the submitter. Instruments incorporating a load cell purporting to comply with this approval shall be marked NSC No S258 in addition to the approval number of the instrument.

This approval may be withdrawn if load cells are constructed other than in accordance with the drawings and specifications lodged with the Commission and/or perform other than in accordance with these approval documents.

The values of the performance criteria (maximum number of scale intervals etc.) applicable to an instrument incorporating these load cells shall be within the limits specified in this approval and in any approval documentation for the other components, excepting any limitations imposed by mechanical indicators on mechanical baseworks in such documentation.

The Commission reserves the right to examine any instrument or component of an instrument purporting to comply with this approval.

DESCRIPTIVE ADVICE

Pattern: approved 29/9/89

- Revere model CSP-M-40t-C3-SC load cell of 40 000 kg capacity.

Technical Schedule No S258 describes the pattern.

FILING ADVICE

The documentation for this approval comprises:

Supplementary Certificate of Approval No S258 dated 30/3/90
Technical Schedule No S258 dated 30/3/90 (Incl. Table 1)
Figures 1 to 4 dated 30/3/90



National Standards Commission

TECHNICAL SCHEDULE No S258

Pattern: Revere Model CSP-M-40t-C3-SC Load Cell.

Submittor: Revere Transducers Europe
Schapenweide 50
NL-4824 HX Breda
Holland.

1. Description of Pattern

The pattern is a Revere model CSP-M-40t-C3-SC load cell of 40 000 kg capacity (refer Figure 1 and Table 1).

The load cell is approved for use with a maximum of either 1500 or 3000 verification scale intervals; in the latter case, the load cell must be used with an indicator which is Commission-approved with a linearisation facility having at least 3 intermediate programmable points.

1.1 Method of Mounting

Mounting is to be in accordance with the manufacturer's instructions and in accordance with one of the methods shown in Figures 2 to 4.

1.3 Markings

The following is the minimum data required to be marked on the load cells:

Manufacturer's name or mark	
Model number	
Serial number	
NSC approval number	NSC No S258
Maximum rated capacity	

TABLE 1

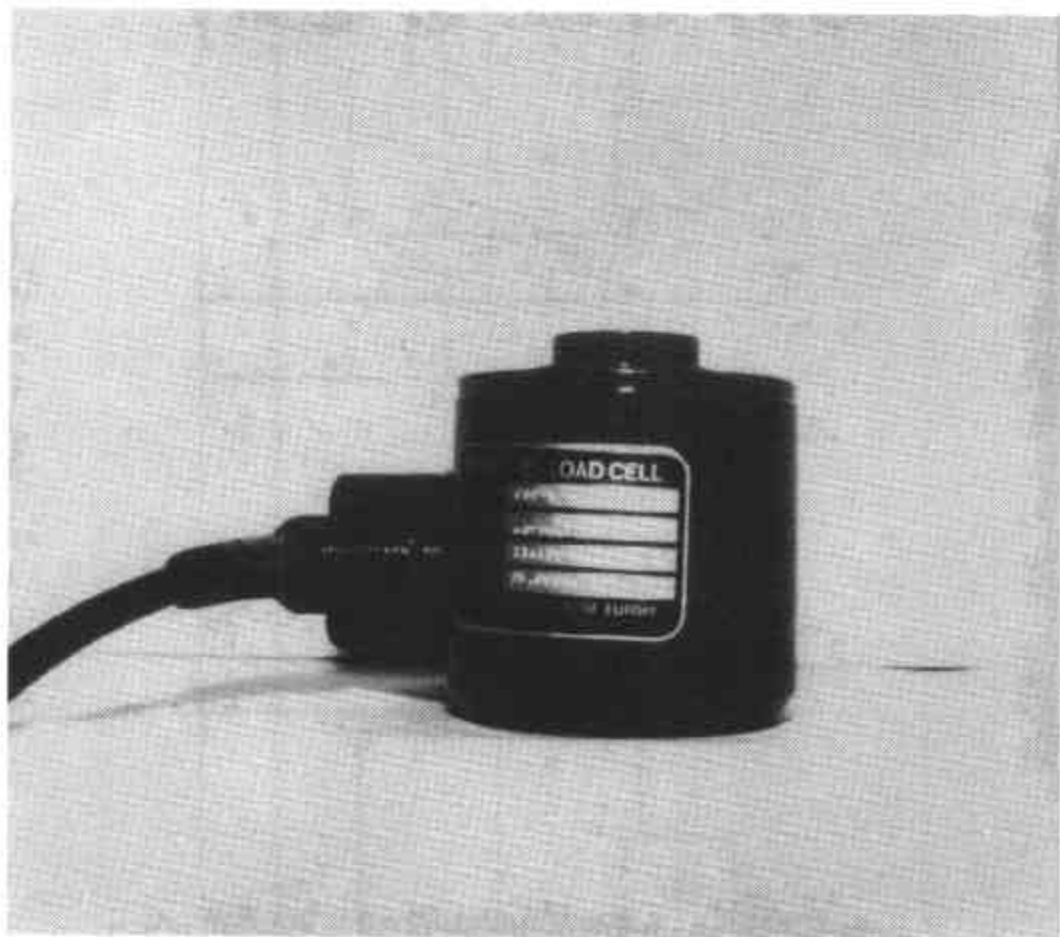
Type:	Revere model CSP-M-40t-C3-SC
Maximum capacity	40 000 kg
Maximum number of verification scale intervals	(a) 1500 (3000 - #) (b) 1500 (3000 - #)
Minimum value of verification scale interval	(a) 1.60 kg (b) 4.00 kg
Output rating (nominal)	2.0 mV/V
Input impedance (nominal)	450 ohms
Supply voltage (AC or DC)	5-20 V
Cable length (\pm 0.1 m)	19.5 m
Number of leads (plus shield)	4

(a) Instruments with automatic zero track.

(b) Instruments without automatic zero track.

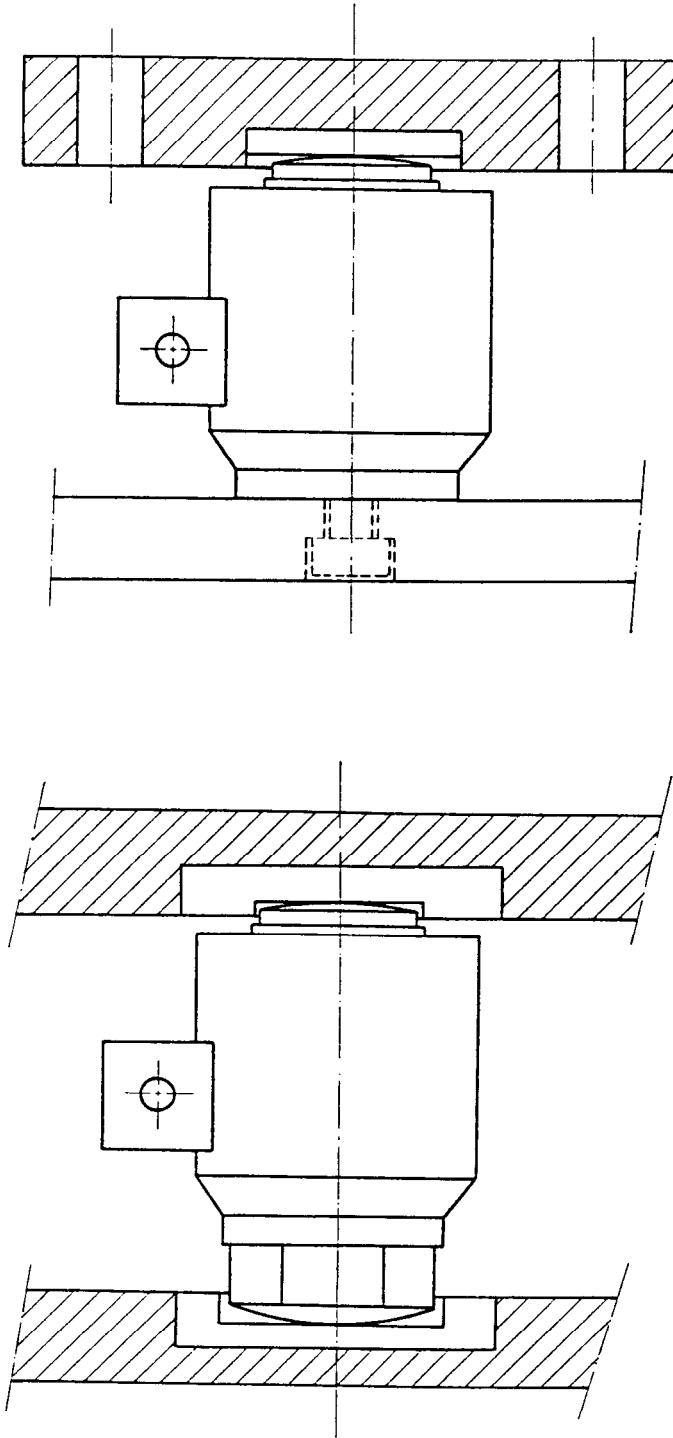
(#) When used with an indicator which is Commission-approved with a linearisation facility having up to 3 programmable points.

Figure S258 - 1



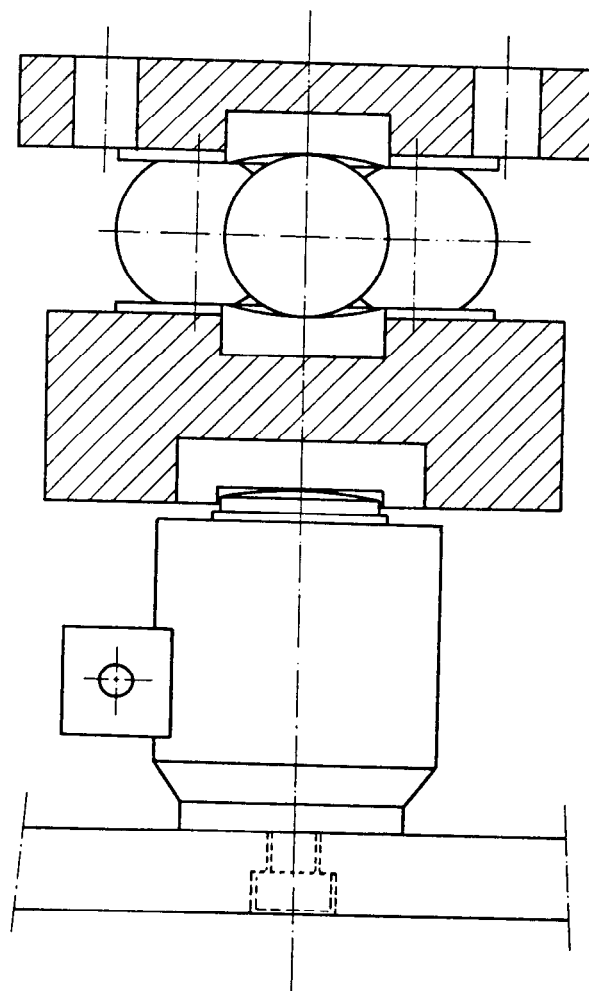
Revere Model CSP Load Cell

Figure S258 - 2



Alternative Mounting Methods

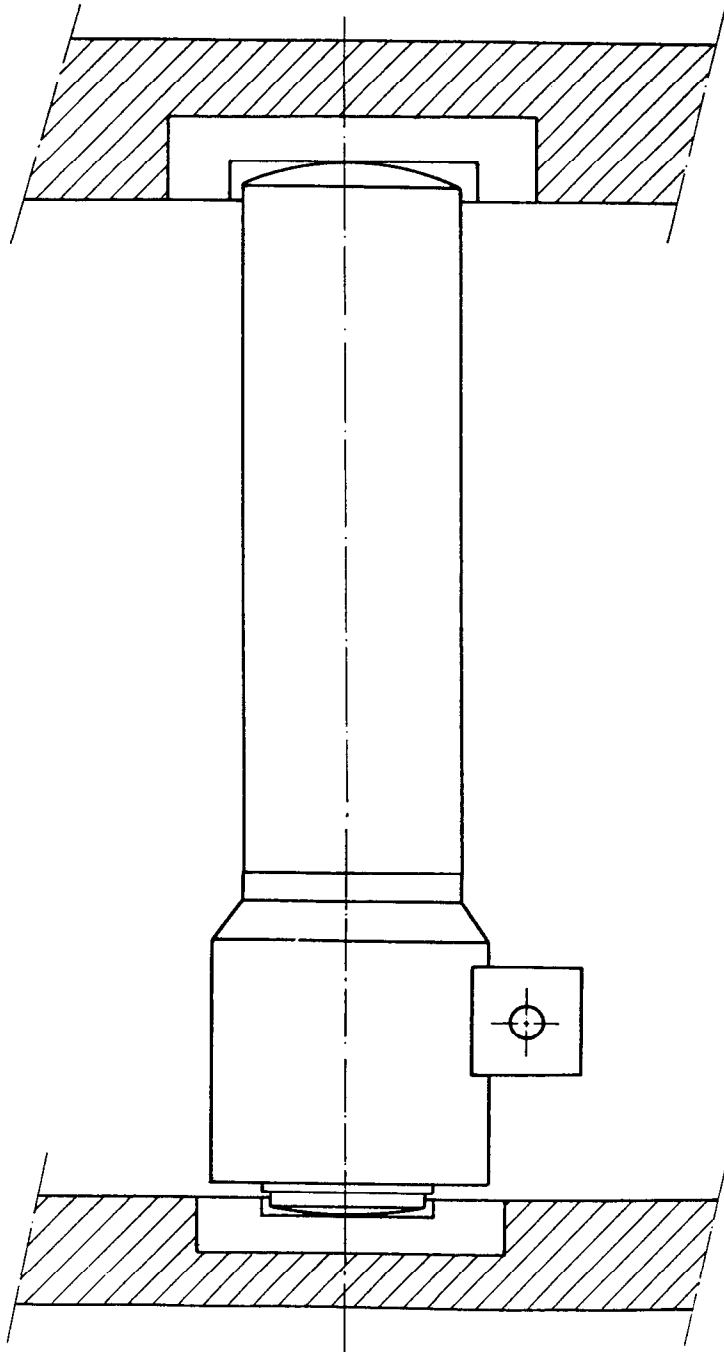
Figure S258 - 3



Alternative Mounting Method

S258
30/3/90

Figure S258 - 4



Alternative Mounting Method