

National Standards Commission



Supplementary Certificate of Approval

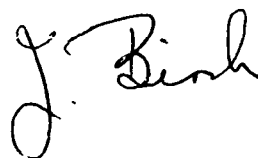
No S264

Issued under Regulation 9
of the
National Measurement (Patterns of Instruments) Regulations

This is to certify that an approval for use for trade has been granted in respect of the

Toledo Model 0752 Load Cell

submitted by Toledo Scale (Australia) Ltd
525 Graham Street
Port Melbourne VIC 3207.



Signed and sealed by a person authorised under Regulation 9 of the National Measurement (Patterns of Instruments) Regulations to exercise the powers and functions of the Commission under this Regulation.

CONDITIONS OF APPROVAL

This approval is subject to review on or after 1/3/95.

This approval expires in respect of new instruments on 1/3/96.

Instruments purporting to comply with this approval shall be marked NSC No S264 and only by persons authorised by the submitter. Instruments incorporating a load cell purporting to comply with this approval shall be marked NSC No S264 in addition to the approval number of the instrument.

Instruments currently marked PS264 may be remarked S264 at their next verification/certification.

This approval may be withdrawn if load cells are constructed other than in accordance with the drawings and specifications lodged with the Commission and/or perform other than in accordance with these approval documents.

The values of the performance criteria (maximum number of scale intervals etc.) applicable to an instrument incorporating these load cells shall be within the limits specified in this approval and in any approval documentation for the other components, excepting any limitations imposed by mechanical indicators on mechanical baseworks in such documentation.

The Commission reserves the right to examine any instrument or component of an instrument purporting to comply with this approval.

Special:

Load cells purporting to comply with this approval may be used to replace load cells of the same model and capacity in existing instruments but shall not be used in new instruments.

The submitter shall notify the Commission of the serial numbers of all load cells installed as replacements as described above, in accordance with the requirements of the Commission's Circular No 320.

DESCRIPTIVE ADVICE

Pattern: provisionally approved 14/2/90 - approved 17/5/91

. A Toledo model 0752 load cell of 22.7 t maximum capacity.

Technical Schedule No S264 describes the pattern.

FILING ADVICE

Provisional Supplementary Certificate of Approval No PS264 is superseded by this Certificate and may be destroyed. The documentation for this approval now comprises:

Supplementary Certificate of Approval No S264 dated 24/5/91
Technical Schedule No S264 dated 11/5/90 (incl. Table 1)
Figures 1 and 2 dated 11/5/90



National Standards Commission

TECHNICAL SCHEDULE No S264

Pattern: Toledo Model 0752 Load Cell.

Submittor: Toledo Scale (Australia) Ltd
525 Graham Street
Port Melbourne VIC 3027.

1. Description of Pattern

The pattern is a Toledo model 0752 load cell of 22.7 t capacity (refer Figure 1 and Table 1) approved for use with a maximum of 3000 verification scale intervals.

1.1 Method of Mounting

Mounting is to be in accordance with the manufacturer's instructions and using the method shown in Figure 2.

1.3 Markings

The following is the minimum data required to be marked on the load cells:

Manufacturer's name or mark	
Model number	
Serial number	
NSC approval number	NSC No PS264
Maximum rated capacity	

TABLE 1

Type: Toledo model 0752		
Maximum capacity		22.7 t
Maximum number of verification scale intervals	(a)	3000
	(b)	3000
Minimum value of verification scale interval	(a)	1.50 kg
	(b)	2.60 kg
Output rating (nominal)		2.0 mV/V
Input impedance (nominal)		825 ohms
Supply voltage (AC or DC)		10–15 V
Number of leads (plus shield)		6
Cable length (± 0.1 m)		12.2 m

(a) Instruments with automatic zero track.

(b) Instruments without automatic zero track.

National Standards Commission



NOTIFICATION OF CHANGE

VARIOUS CERTIFICATES OF APPROVAL

The following changes are made to the approval documentation for various approvals

submitted by Toledo Scale (Australia) Ltd
525 Graham Street
Port Melbourne VIC 3207.

In the Certificates and Technical Schedules listed overleaf, the following changes should be made: (Note: Only current approvals are listed.)

1. The submittor should be changed to read;

Mettler Toledo Limited

(the address remains unchanged)
2. All references to 'Toledo' instruments or components should be amended to read 'Toledo (or Mettler or Mettler Toledo)'.

NOTE: Any 'Toledo' instrument or component described in the approval documentation may now also be known as 'Mettler or Mettler Toledo'.

APPROVAL NUMBER	PATTERN
6/4C/65	8214 Weighing Instrument
6/4C/68	8215 Weighing Instrument
6/4D/242	8421 Weighing Instrument
6/9C/2A	2191 Weighing Instrument
6/9C/24A	2503 Weighing Instrument
6/9C/28	2020 Weighing Instrument
6/9C/24A 44A	2985 Weighing Instrument
6/9C/76	2295 Weighing Instrument
6/9C/87	2375 Weighing Instrument
6/9C/97	2155 Weighing Instrument
6/9C/98	9118 Weighing Instrument
6/9C/206	6303 Weighing Instrument
6/9C/231	1938 Weighing Instrument
6/10B/46A	7560 Weighing Instrument
6/14B/9A	2352 Hopper Weighing Instrument
6/18/21	2299 Overhead Weighing Instrument
S253	8530 Digital Indicator
S266	8520 Digital Indicator
S283	8510 Digital Indicator
S111A	0721 Load Cell
S112A	0723 Load Cell
S143	0752 Load Cell
S172	0725 Load Cell
S211	0742 Load Cell
S252	0760 Load Cell
S264	0752 Load Cell
S268	RLC 5000 Load Cell

Signed and sealed by a person authorised under Regulation 9 of the National Measurement (Patterns of Measuring Instruments) Regulations to exercise the powers and functions of the Commission under this Regulation.

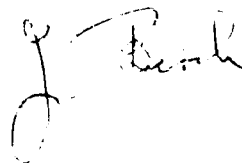


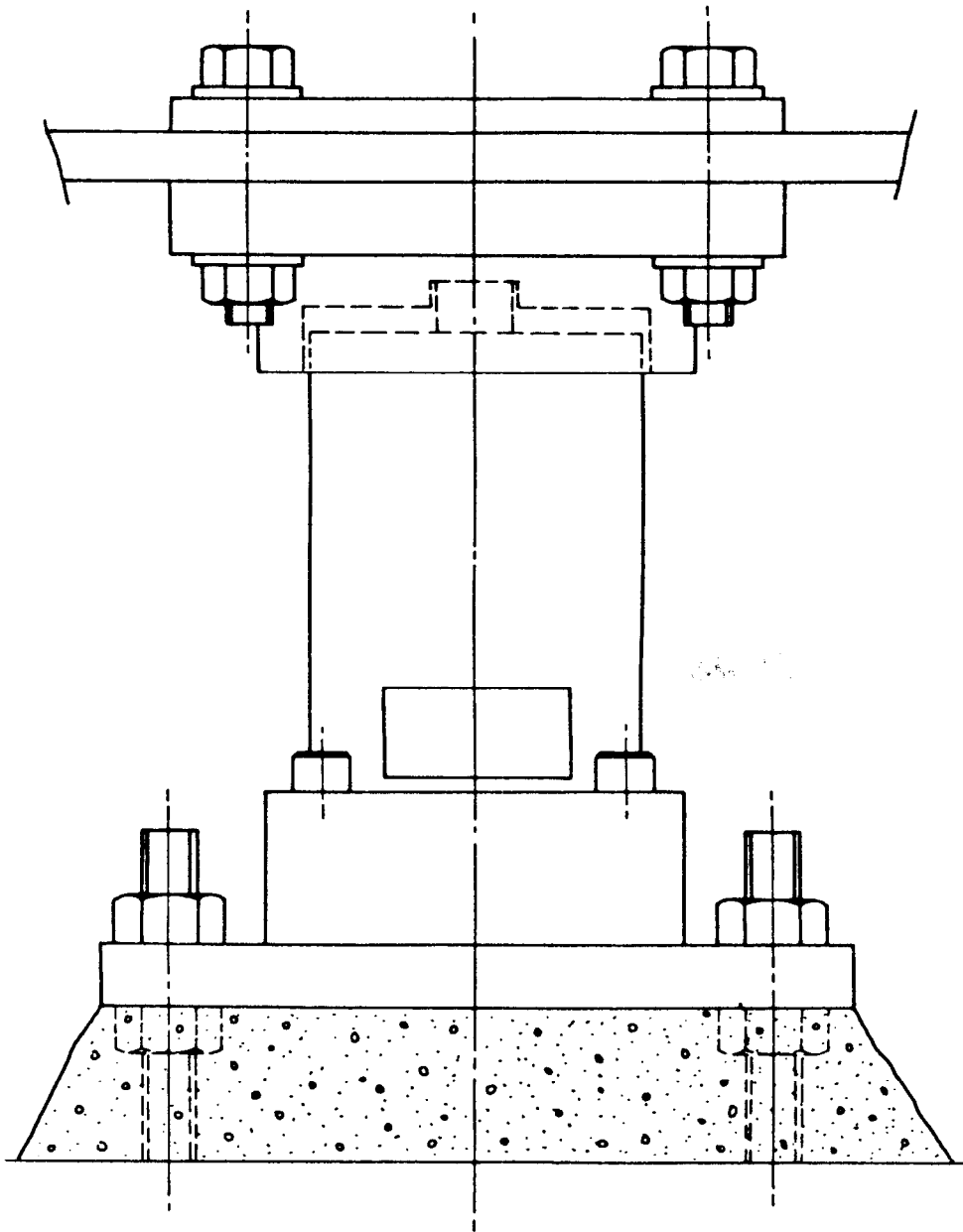
Figure S264 - 1



Toledo Model 0752 Load Cell

S264
11/5/90

Figure S264 - 2



Schematic of Typical Load Cell Mounting