

National Standards Commission

12 Lyonpark Road, North Ryde NSW

Cancellation

Supplementary Certificate of Approval

No S269A

Issued under Regulation 60
of the
National Measurement Regulations 1999

This is to certify that the approval for use for trade granted in respect of the

Precision Transducers Model ST 5T Load Cell

submitted by Precision Transducers Ltd
7 Marken Place
Glenfield Auckland
NEW ZEALAND

has been cancelled in respect of new instruments as from 1 January 2003.

Signed by a person authorised under Regulation 60
of the National Measurement Regulations 1999 to
exercise the powers and functions of the Commission
under this Regulation.



National Standards Commission



Supplementary Certificate of Approval

No S269A

Issued under Regulation 9
of the
National Measurement (Patterns of Measuring Instruments) Regulations

This is to certify that an approval for use for trade has been granted in respect of the

Precision Transducers Model ST 5T Load Cell

submitted by Precision Transducers Ltd
 7 Marken Place
 Glenfield Auckland
 NEW ZEALAND

NOTE: This Certificate relates to the suitability of the pattern of the instrument for use for trade only in respect of its metrological characteristics. This Certificate does not constitute or imply any guarantee of compliance by the manufacturer or any other person with any requirements regarding safety.

This Certificate is issued upon completion of a review of NSC approval No S269.

CONDITIONS OF APPROVAL

This approval is subject to review on 1 January 2002, and then every 5 years thereafter.

Instruments purporting to comply with this approval shall be marked NSC No S269A and only by persons authorised by the submitter.

It is the submitter's responsibility to ensure that all instruments marked with this approval number are constructed as described in the documentation lodged with the Commission and with the relevant Certificate of Approval and Technical Schedule. Failure to comply with this Condition may attract penalties under Section 19B of the National Measurement Act and may result in cancellation or withdrawal of the approval, in accordance with the Commission's Document 106.

The Commission reserves the right to examine any instrument or component of an instrument purporting to comply with this approval.

DESCRIPTIVE ADVICE

Pattern: approved 4 December 1996

- A Precision Transducers model ST 5T load cell of 5000kg maximum capacity.

Technical Schedule No S269A describes the pattern.

FILING ADVICE

The documentation for this approval comprises:

Supplementary Certificate of Approval No S269A dated 16 May 1997
Technical Schedule No S269A dated 16 May 1997 (incl. Table 1)
Figures 1 and 2 dated 16 May 1997

Signed and sealed by a person authorised under Regulation 9 of the National Measurement (Patterns of Measuring Instruments) Regulations to exercise the powers and functions of the Commission under this Regulation.

National Standards Commission

TECHNICAL SCHEDULE No S269A

Pattern: Precision Transducers Model ST 5T Load Cell.

Submitter: Precision Transducers Ltd
7 Marken Place
Glenfield Auckland NEW ZEALAND

1. Description of Pattern

A Precision Transducers model ST 5T load cell of 5 000 kg maximum capacity (Figure 1 and Table 1) approved for use with up to 2000 verification scale intervals.

1.1 Method of Mounting

Mounting is to be in accordance with the manufacturer's instructions and as shown in Figure 2.

1.2 Markings

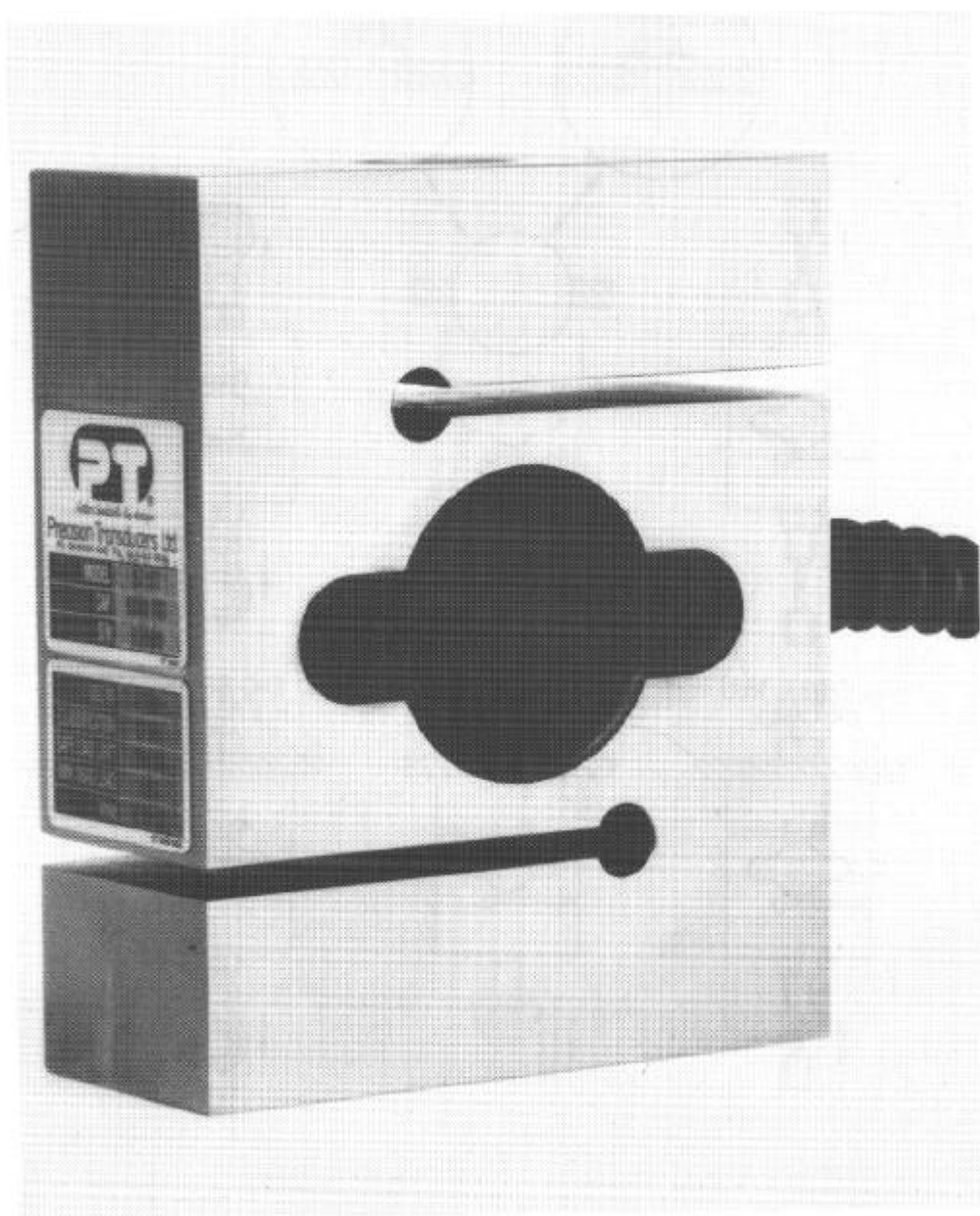
Each load cell shall carry the following markings, in the form shown at right:

Manufacturer's mark, or name written in full	
Model number	
Serial number	
Pattern approval mark	NSC No S269A
Maximum rated capacity	Max kg

TABLE 1

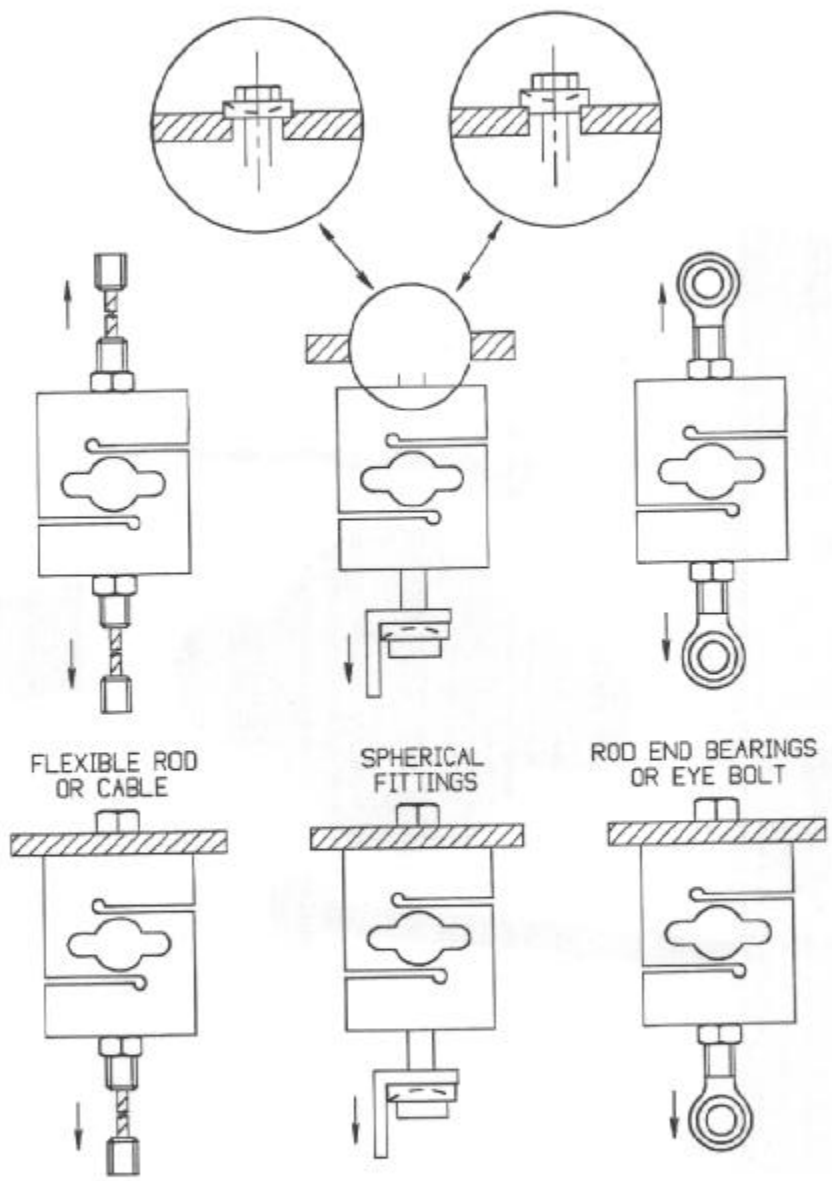
Type:	ST 5T	
Maximum capacity	5 000	kg
Maximum number of verification scale intervals	2 000	
Minimum value of verification scale interval	0.783	kg
Minimum dead load output return for multiple-range instruments (DR)	1.225	kg
Output rating (nominal)	2.0	$\mu\text{V/V}$
Input impedance (nominal)	410	Ω
Supply voltage (AC or DC)	5-15	V
Cable length (± 0.1 m)	0.5-20	m
Number of leads (plus shield)	6	

FIGURE S269A - 1



Precision Transducers Model ST 5T Load Cell

FIGURE S269A - 2



Approved Mounting Methods - ST 5T Load Cell