

## National Standards Commission



### Supplementary Certificate of Approval

#### No S303

Issued under Regulation 9  
of the  
National Measurement (Patterns of Measuring Instruments) Regulations

This is to certify that an approval for use for trade has been granted in respect of the

Mettler Toledo Model 0744 Load Cell

submitted by Mettler Toledo Limited  
525 Graham Street  
Port Melbourne VIC 3027.

**NOTE:** This Certificate relates to the suitability of the pattern of the instrument for use for trade only in respect of its metrological characteristics. This Certificate does not constitute or imply any guarantee of compliance by the manufacturer or any other person with any requirements regarding safety.

#### CONDITIONS OF APPROVAL

This approval is subject to review on or after 1/9/98.  
This approval expires in respect of new instruments on 1/9/99.

Instruments purporting to comply with this approval shall be marked NSC No S303 and only by persons authorised by the submittor.

Instruments incorporating a component purporting to comply with this approval shall be marked NSC No S303 in addition to the approval number of the instrument.

It is the submitter's responsibility to ensure that all instruments marked with this approval number are constructed as described in the documentation lodged with the Commission and with the relevant Certificate of Approval and Technical Schedule. Failure to comply with this Condition may attract penalties under Section 19B of the National Measurement Act and may result in cancellation or withdrawal of the approval, in accordance with the Commission's Document 106.

The values of the performance criteria (maximum number of scale intervals etc.) applicable to an instrument incorporating the pattern approved herein shall be within the limits specified herein and in any approval documentation for the other components.

The Commission reserves the right to examine any instrument or component of an instrument purporting to comply with this approval.

#### DESCRIPTIVE ADVICE

**Pattern:** approved 27/8/93

- A Mettler Toledo model 0744 load cell of 1100 kg capacity approved for use with a maximum of 3000 verification scale intervals.

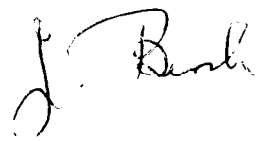
Technical Schedule No S303 describes the pattern.

#### FILING ADVICE

The documentation for this approval comprises:

Supplementary Certificate of Approval No S303 dated 22/11/93  
Technical Schedule No S303 dated 22/11/93 (incl. Table 1)  
Figure 1 dated 22/11/93

Signed and sealed by a person authorised under Regulation 9 of the National Measurement (Patterns of Measuring Instruments) Regulations to exercise the powers and functions of the Commission under this Regulation.





## National Standards Commission

### TECHNICAL SCHEDULE No S303

**Pattern:** Mettler Toledo Model 0744 Load Cell.

**Submittor:** Mettler Toledo Limited  
525 Graham Street  
Port Melbourne VIC 3027.

#### 1. Description of Pattern

A Mettler Toledo model 0744 load cell of 1100 kg capacity (refer Figure 1 and Table 1) approved for use with a maximum of 3000 verification scale intervals.

##### 1.1 Method of Mounting

Mounting is to be in accordance with the manufacturer's instructions and as shown in Figure 1.

##### 1.2 Markings

The following is the minimum data required to be marked on the load cells:

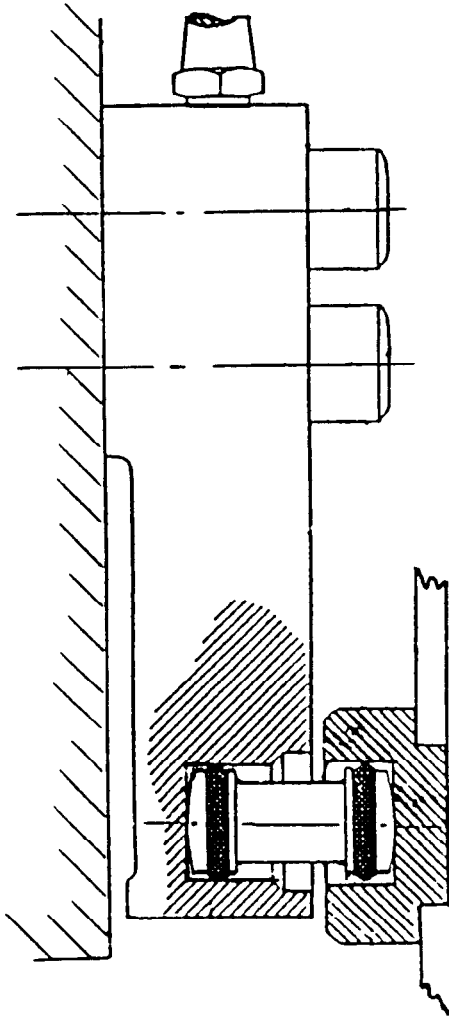
Manufacturer's name or mark	
Model number	
Serial number	
NSC approval number	NSC No S303
Maximum rated capacity	

TABLE 1

Type: Mettler Toledo 0744

Maximum capacity	1100 kg
Maximum number of verification scale intervals	3000
Minimum value of verification scale interval	0.100 kg
Minimum dead load output return for multi-range instruments (DR)	0.088 kg
Output rating (nominal)	1.94 (mV/V)
Input impedance (nominal)	385 (ohms)
Supply voltage (AC or DC)	6 to 15 (V)
Cable length ( $\pm 0.1$ m)	2.3, 4.6 or 9.2 (m)
Number of leads (plus shield)	4

FIGURE S303 - 1



Mettler Toledo Model 0744 Load Cell  
(may be mounted as shown or inverted)