



Australian Government
Department of Industry,
Innovation and Science

National Measurement Institute

Supplementary Certificate of Approval NMI S578

Issued by the Chief Metrologist under Regulation 60
of the
National Measurement Regulations 1999

This is to certify that an approval for use for trade has been granted in respect of the instruments herein described.

NCR Model 7350 Point of Sale (POS) System

submitted by NCR Corporation
2651 Satellite Blvd
Duluth Georgia 30096
USA

NOTE: This Certificate relates to the suitability of the pattern of the instrument for use for trade only in respect of its metrological characteristics. This Certificate does not constitute or imply any guarantee of compliance by the manufacturer or any other person with any requirements regarding safety.

This approval has been granted with reference to document NMI M7, *Pattern Approval Specifications for Point of Sale Systems*, dated June 2012.

This approval becomes subject to review on **1/09/21**, and then every 5 years thereafter.

DOCUMENT HISTORY

Rev	Reason/Details	Date
0	Pattern provisionally approved – interim certificate issued	2/08/12
1	Pattern amended (validity date) – interim certificate issued	15/11/12
2	Pattern & variant 1 approved – certificate issued	13/12/12
3	Pattern amended (remote verification & location of descriptive markings) – certificate issued	20/12/13
4	Pattern amended (remote verification) – certificate issued	24/02/14
5	Pattern amended (software versions) – certificate issued	19/10/15
6	Variant 2 approved – interim certificate issued	22/12/15
7	Variant 2 amended (model number) – interim certificate issued	14/01/16

Document History (cont...)

Rev	Reason/Details	Date
8	Pattern & variants 1 & 2 amended (validity date) – interim certificate issued	17/08/16
9	Pattern & variants 1 to 3 approved – certificate issued	25/08/16
10	Pattern & variant amended (software check method) – Pattern amended (Figure 2 replaced) – Variant 2 amended (Figure 6 added) – Variant 4 approved – certificate issued	10/04/17

CONDITIONS OF APPROVAL

General

Instruments purporting to comply with this approval shall be marked with pattern approval number 'NMI S578' and only by persons authorised by the submittor.

Instruments purporting to comply with this approval and currently marked 'NMI PS578' may be re-marked 'NMI S578' but only by persons authorised by the submittor.

It is the submittor's responsibility to ensure that all instruments marked with this approval number are constructed as described in the documentation lodged with the National Measurement Institute (NMI) and with the relevant Certificate of Approval and Technical Schedule. Failure to comply with this Condition may attract penalties under Section 19B of the National Measurement Act and may result in cancellation or withdrawal of the approval, in accordance with document NMI P 106.

Special

Certain aspects of this instrument (in particular transaction record printing formats) are able to be configured by the user. Whilst NMI believes that acceptable formats can be achieved for typical basic sales modes, it is also possible for the instrument to be configured to produce unacceptable formats, and use of some formats may be inappropriate for different sales modes. It is the responsibility of the user to ensure that acceptable and appropriate formats are used in any particular situation.

Signed by a person authorised by the Chief Metrologist to exercise their powers under Regulation 60 of the *National Measurement Regulations 1999*.



Dr A Rawlinson

TECHNICAL SCHEDULE No S578

1. Description of Pattern **provisionally approved on 2/08/12**
approved on 13/12/12

An NCR model 7350 (**) system to provide self check out facility for compatible (#) NMI-approved point of sale systems granted with reference to document NMI M7.

(**) This is the basic model number which may have suffixes, in the form 7350-xxxx-xxxx, where x may be any digit 0–9 representing non-metrological features.

1.1 Key Features

- The system provides a self check out facility for point of sale arrangements for a compatible NMI approved point of sale (POS) systems.
 - The system includes an inbuilt NCR model 7878-2001-9090 self-indicating non-automatic weighing instrument (approval NMI 6/4C/251) or other compatible (#) NMI-approved measuring instruments.
- (#) ‘Compatible’ is defined to mean that no additions/changes to the hardware/software specified in this approval are required for satisfactory operation of the system.

1.2 System Description

The NCR model 7350 self check out system (Figure 1) comprises:

(i) POS Controller

The NCR model 7350 or equivalent (*) PC-based device operates a Microsoft Windows operating system running NCR SelfServ Checkout (aka ‘Application’) versions 4.x, 5.x or 6.x software (where ‘x’ represents a number of numeric suffixes).

The software version number is displayed by pressing the ‘Supervisory’ button (as shown in Figure 2), entering a password (available from store manager), selecting ‘Terminal Information’ from the utility menu and scrolling down to ‘Software Version’ under ‘NCR SelfServ Checkout Information’ (refer to the Test Procedure). This software works in conjunction with other NMI approved POS systems. The details of the NMI approved POS system are also displayed on the screen ‘terminal Information’ screen as ‘POS Vendor’, ‘POS Name’ and ‘POS Version’ - the relevant NMI approval number for this POS system will be the same as the non-self check out lanes at the same site.

Note: The software version number may alternatively be displayed by following the procedure described in Test Procedure S578 part D.

(ii) Electronic Indications

Indications shall satisfy the requirements of document NMI M7, *Pattern Approval Specifications for Point of Sale Systems*. The POS Controller has an inbuilt touch sensitive computer monitor to provide an indication for the customer (Figure 3).

(iii) Printing Devices

Transaction records shall satisfy the requirements of document NMI M7, *Pattern Approval Specifications for Point of Sale Systems*.

An NCR model 7350-F309 printer or equivalent (*) is connected to the controller to provide transaction record printing facility. A typical record is shown in Figure 4.

- (*) 'Equivalent' is defined to mean other proprietary equipment of the same or better specifications requiring no changes to the software specified in this approval for satisfactory operation of the system.

(iv) Additional System Facilities

In addition, the system may include other facilities including point of sale cash (change) dispenser, magnetic card and/or barcode reader and electronic funds transfer (EFT). The facilities shall not interact with the system in a way that would cause an incorrect indication of the measured quantity or price.

1.3 Verification Provision

Provision is made for the application of a verification mark, applied either locally or remotely for certain systems only.

The procedure on how to access the remote verification mark is included in section C of the Test Procedure.

1.4 Descriptive Markings

The pattern is marked in a clear and permanent manner, in one location (##), with the following information:

Submittor's name or mark	NCR
Serial number or other unique identifier
Pattern approval number	NMI S578

- (##) Suitable locations are either on the POS controller, or on the fascia above the 'Supervisory' button (located as shown in Figure 2) or behind the unlocked access door (which may be located under the counter).

1.5 Family of Devices

The NCR model 7351 (**) device is similar to the pattern, in various configurations of the features outlined in clause **1.2 (iv) Additional System Facilities**.

- (**) This is the basic model number which may have suffixes, in the form 7351-xxxx-xxxx, where x may be any digit 0–9 representing non-metrological features.

2. Description of Variant 1 approved on 13/12/12

The NCR model 735x (**) Hybrid system fitted with a separate customer display, now used as an attendant-operated check out facility (Figure 5).

- (**) This is the basic model number which may have suffixes, in the form 735x-xxxx-xx-xx, where x may be any digit 0 – 9 representing non-metrological features.

3. Description of Variant 2 approved on 21/12/15

An NCR model 7709 (**) system which has the same features, and uses the same software, as the pattern but is in different hardware (Figure 6). May also be known as a model SS90 system.

- (**) This is the basic model number which may have suffixes, in the form 7709-xxxx, where x may be any digit 0–9 representing non-metrological features.

4. Description of Variant 3 **approved on 25/08/16**

With the NCR SelfServ software described in clause **1.2 System Description** replaced by the R10 Store Suite software.

Systems marked with this approval number may also be verified using the remote verification procedures described in certificate NMI **S577**

Note: The software version number may alternatively be displayed by following the procedure described in certificate NMI **S577** Test Procedure S577 part C or part D.

5. Description of Variant 4 **approved on 10/04/17**

An NCR model 7360 (**) system which has the same features, and uses the same software, as the pattern but is in different hardware (Figure 7).

The 7360 includes an additional customer display and can be used as an attendant-operated check out facility.

(**) This is the basic model number which may have suffixes, in the form 7360-xxxx, where x may be any digit 0–9 representing non-metrological features.

TEST PROCEDURE No S578

The POS system shall be tested in addition to any tests specified in the approval documentation for the instruments to which the POS system is connected, as appropriate

The POS system shall be tested in the normal operational mode or in 'training mode' (#) of the instrument and device, but not in any other management mode.

(#) 'Training mode' allows normal operation except that payments do not have to be executed (completed).

The POS system may be tested using the tests below, either:

- A. Local Verification** (in which case a physical verification label shall be applied to the instrument) or
- B. Remote Verification** (in which case the physical verification label is not permitted). Note that remote verification has only been approved for use at the certain stores, namely Coles, Bi-Lo and Woolworths Supermarkets.
- C. Confirmation of Remote Verification** for Coles and Bilo stores
- D. Confirmation of Remote Verification** for Woolworths and Thomas Dux.

Maximum Permissible Error

The maximum permissible error for price computation is ± 0.5 cent.

TESTS

A. Local Verification – the following shall be carried out on each POS system at the location where it is being used with the public

- A1. Check the software version number/s.
- A2. Check that the POS system faithfully reproduces the measurement data in the same units and scale interval as the connected approved measuring instrument, e.g. test by using a PLU without a stored tare.
- A3. Check that the system performs correct price computation, and computes and indicates a correct unrounded subtotal. For cash payment methods, check that any rounding calculation is correct.
- A4. Ensure that electronic indications and printed information are in accordance with document NMI M7.

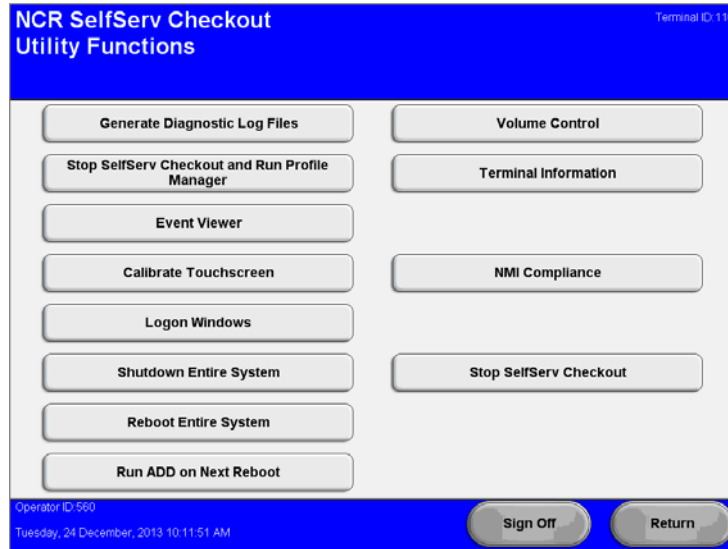
B. Performing a Remote Verification – the following shall be carried out at the location where remote verifications are performed, for representative hardware configurations, and on a 'live' pilot site.

- B1. Check the software version number/s.
- B2. Check that the POS system faithfully reproduces the measurement data in the same units and scale interval as the connected approved measuring instrument, e.g. test by using a PLU without a stored tare.
- B3. Check that the system performs correct price computation, and computes and indicates a correct unrounded subtotal. For cash payment methods, check that any rounding calculation is correct.
- B4. Ensure that electronic indications and printed information are in accordance with document NMI M7.
- B5. Upload verification information to the software and check using the procedure in section C or D below.

- C. **Confirming That a Remote Verification has Been Performed Coles and Bilo stores**
- C1. Accesses Software Version Checking mode on SCO lane by pressing the **'Supervisory Button'** (refer to Figure 2)
- C2. A store manager will log into the SCO lane for the Trade Measurement Officer



C3. At the Utility Functions menu select **<Terminal Information>** button

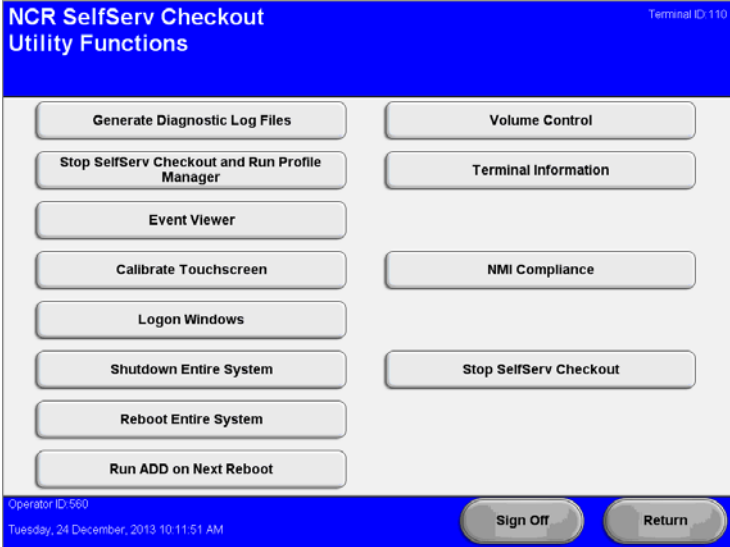


C4. The current SCO software version, POS Vendor, POS Name, and POS Version information will be displayed on the same page.



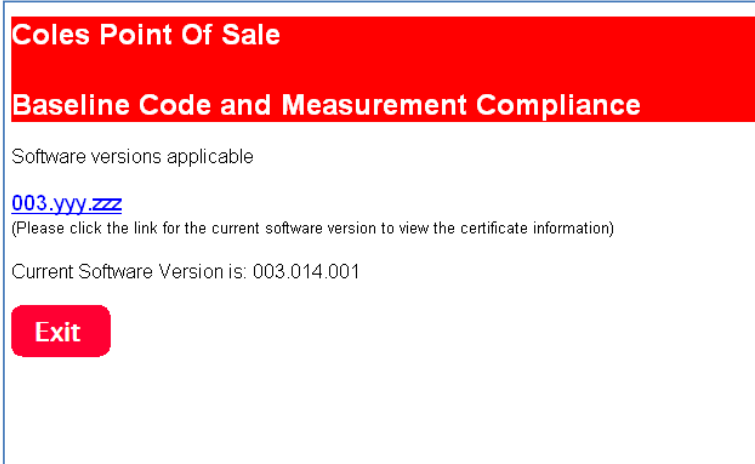
C5. Once the SCO software version, POS Vendor, POS Name, and POS Version information has been confirmed select **<OK>** button to go back to the Utility Functions menu

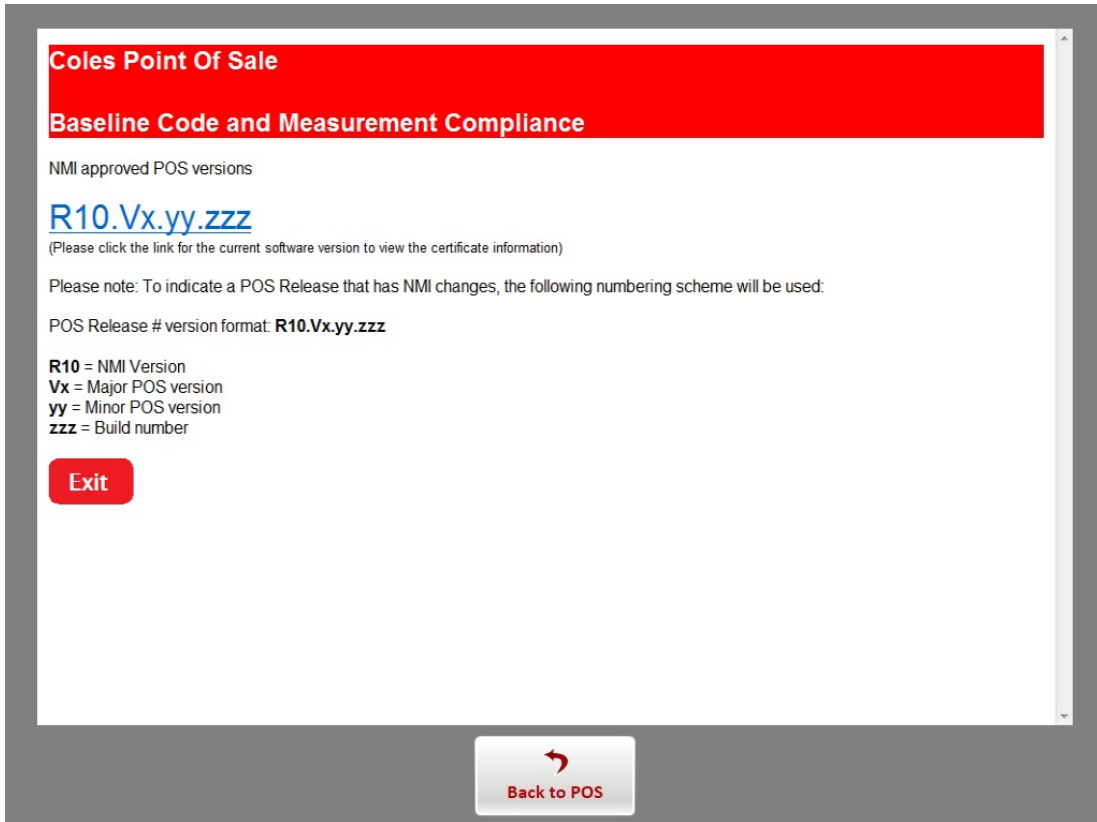
C6. At the Utility Functions menu select **<NMI Compliance>** button



This button will open a browser window pointing to a website on a centrally-located Coles server.

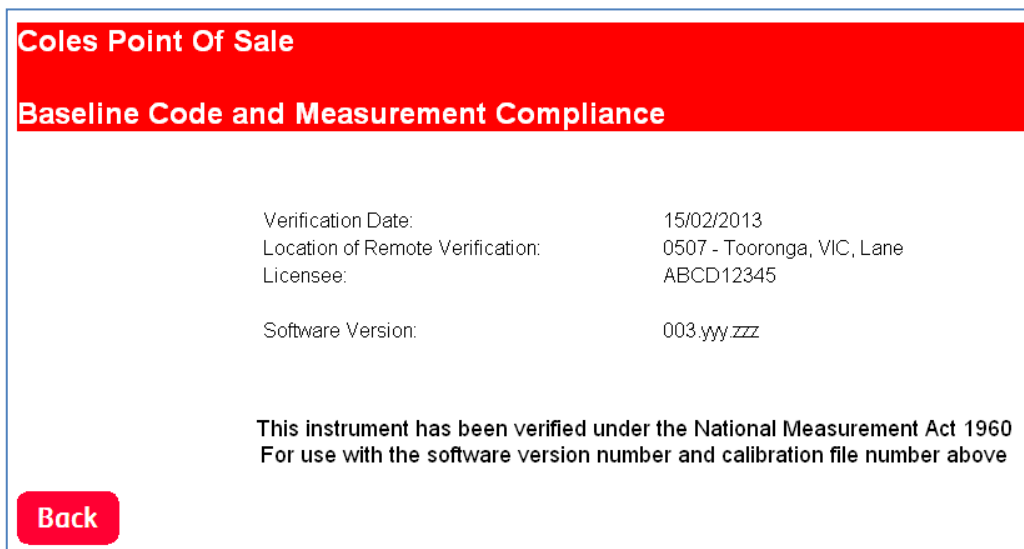
This website will display the following screen which lists the approved NMI versions available in production and also shows the current version of the NCR SCO software.

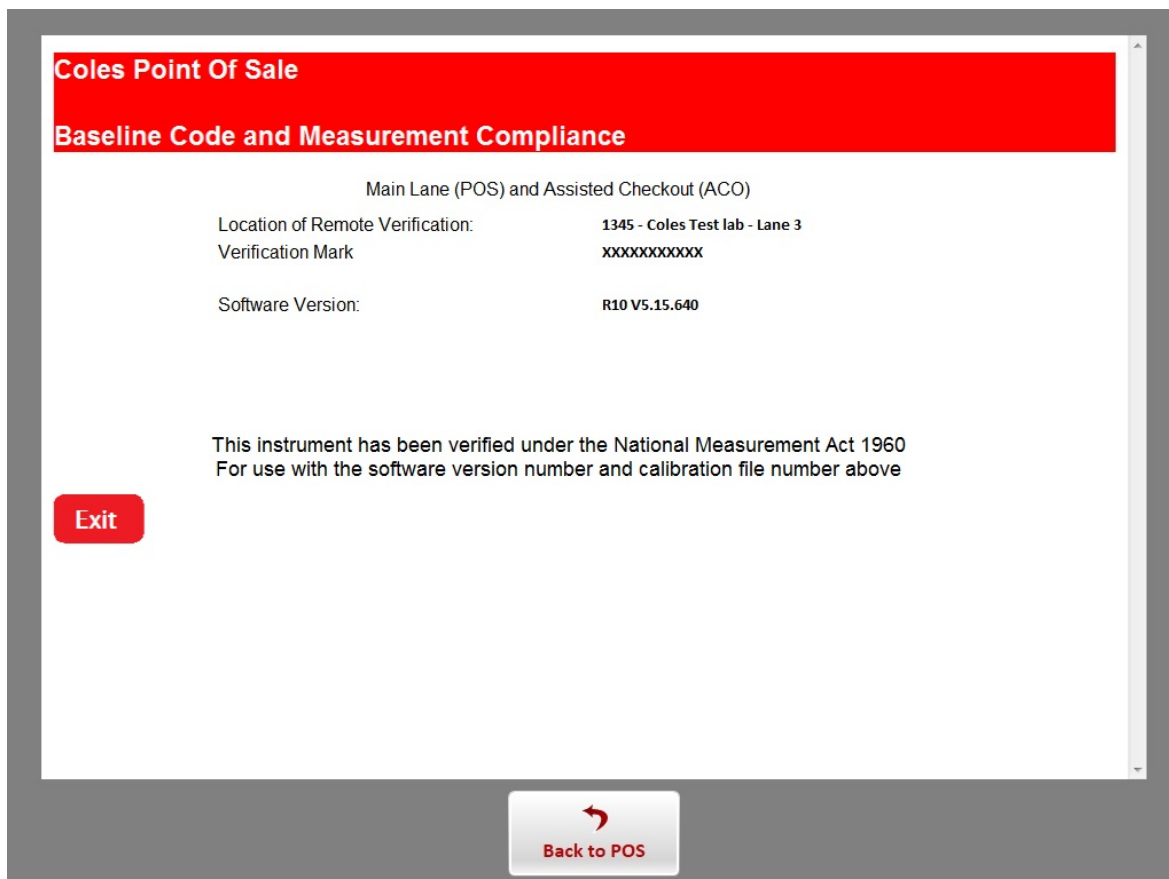




MR Note: Above image is new version

- C7. Clicking on the appropriate NMI version (003.yyy.zzz, 004.yyy.zzz, etc.) for the current software will display the verification information screen (see alternative versions below)

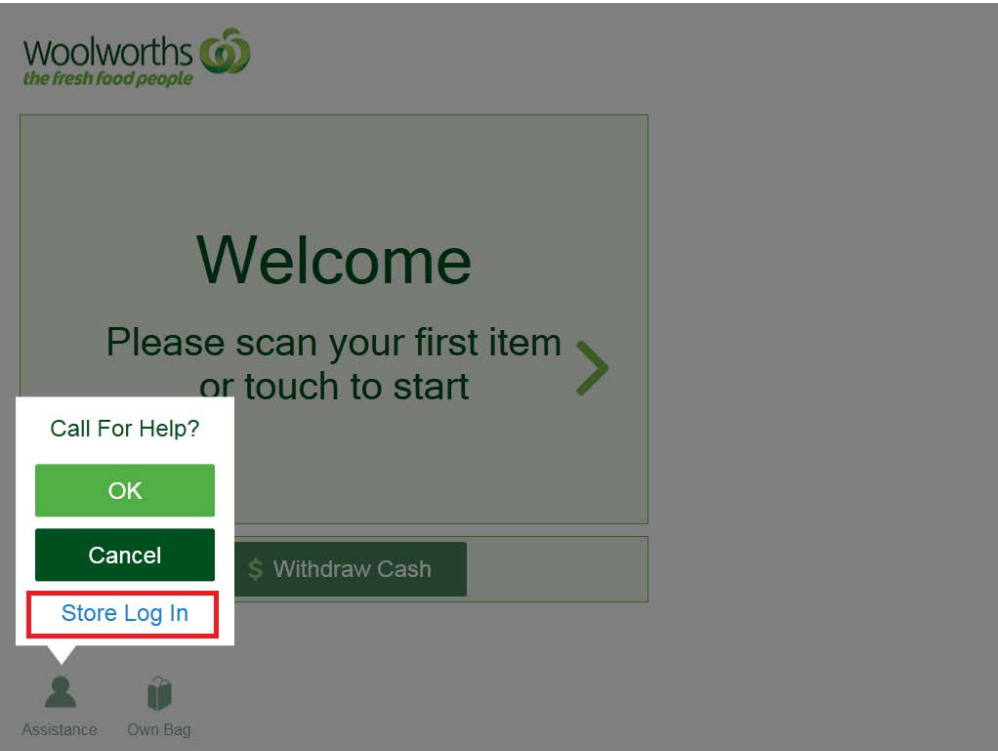
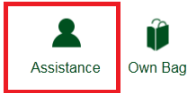
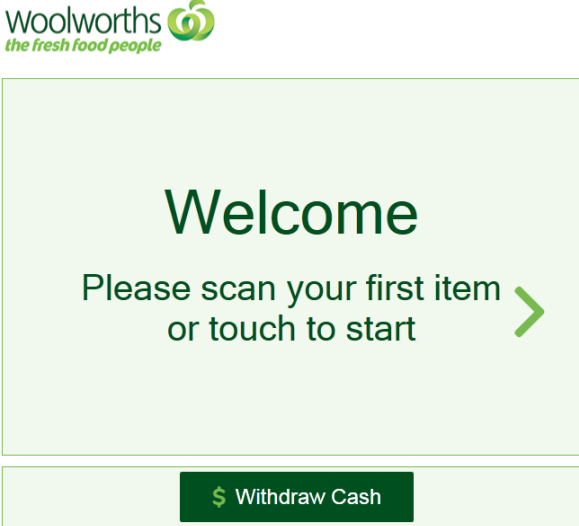




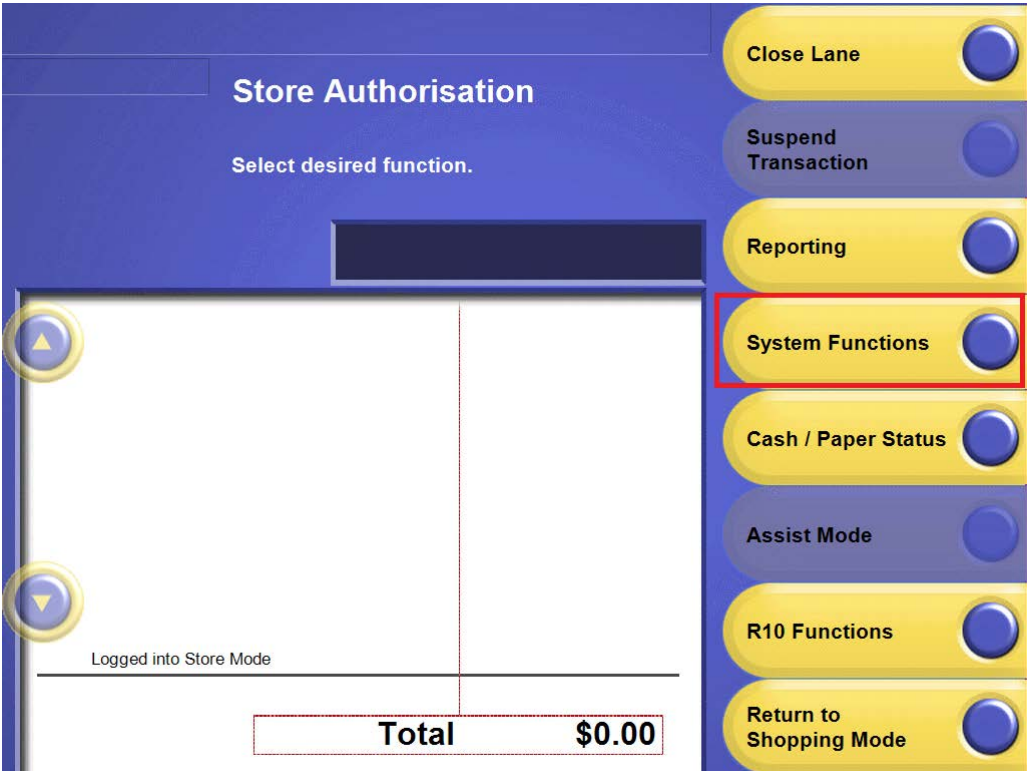
- C8. Once the Coles Point Of Sale software version has been verified, select the **<Back>** button to exit.
- C9. Then select the **<Exit>** button to return to the Utility Function menu.

D. Confirming That a Remote Verification has Been Performed Woolworths and Thomas Dux stores

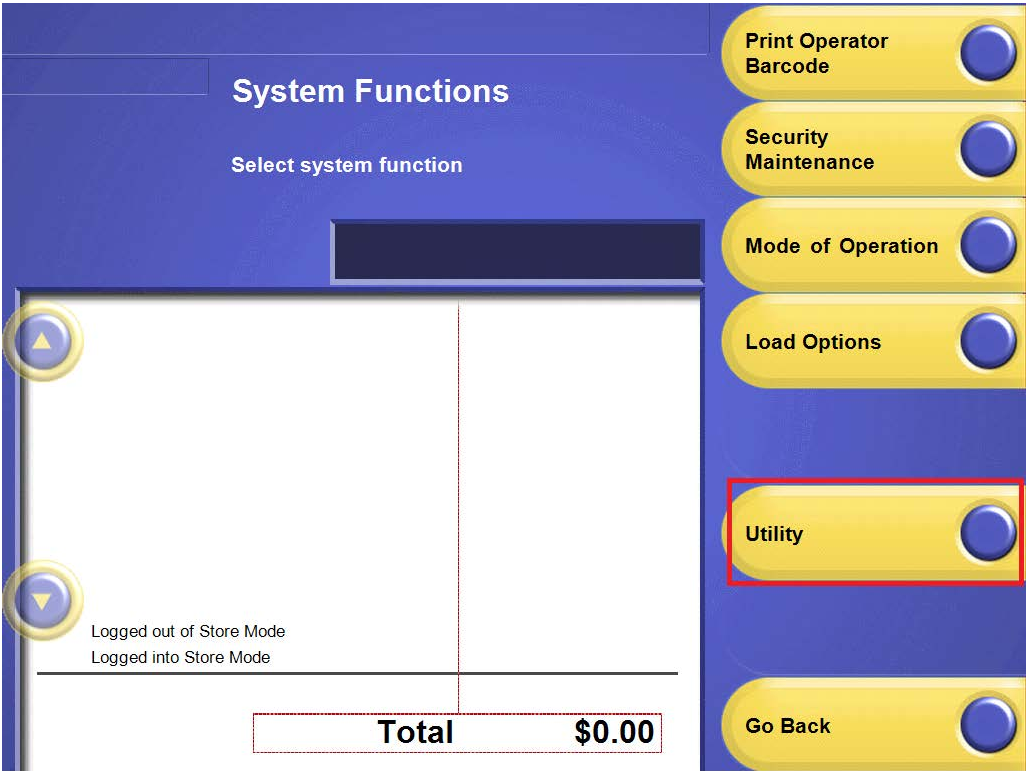
D1. A store manager will log into the POS instrument for the verification person..



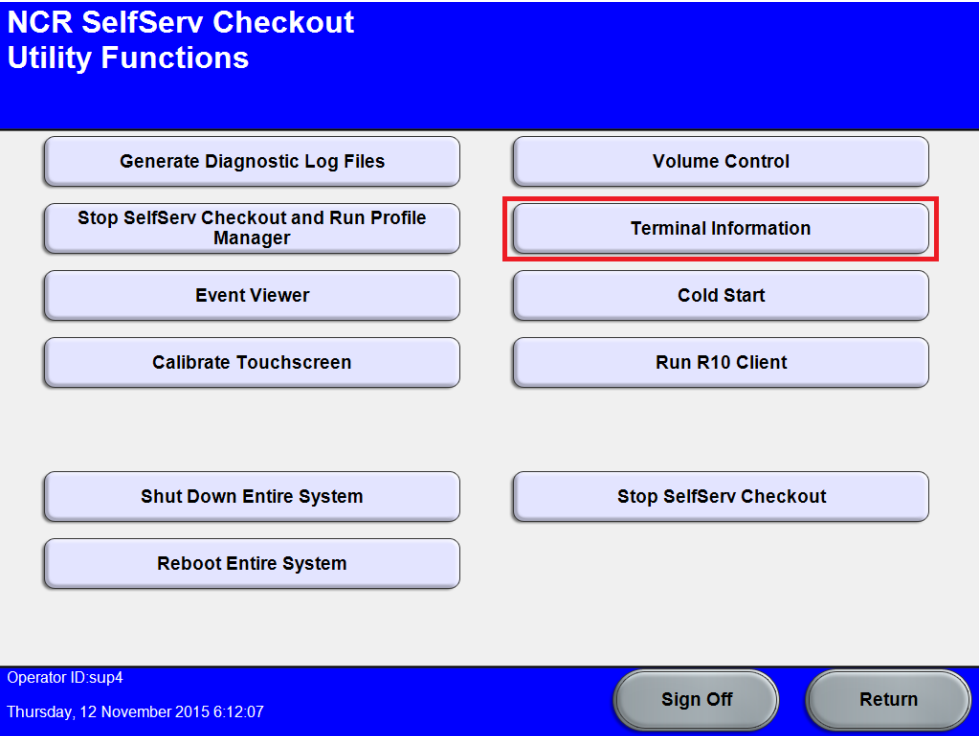
D2. Select System Functions



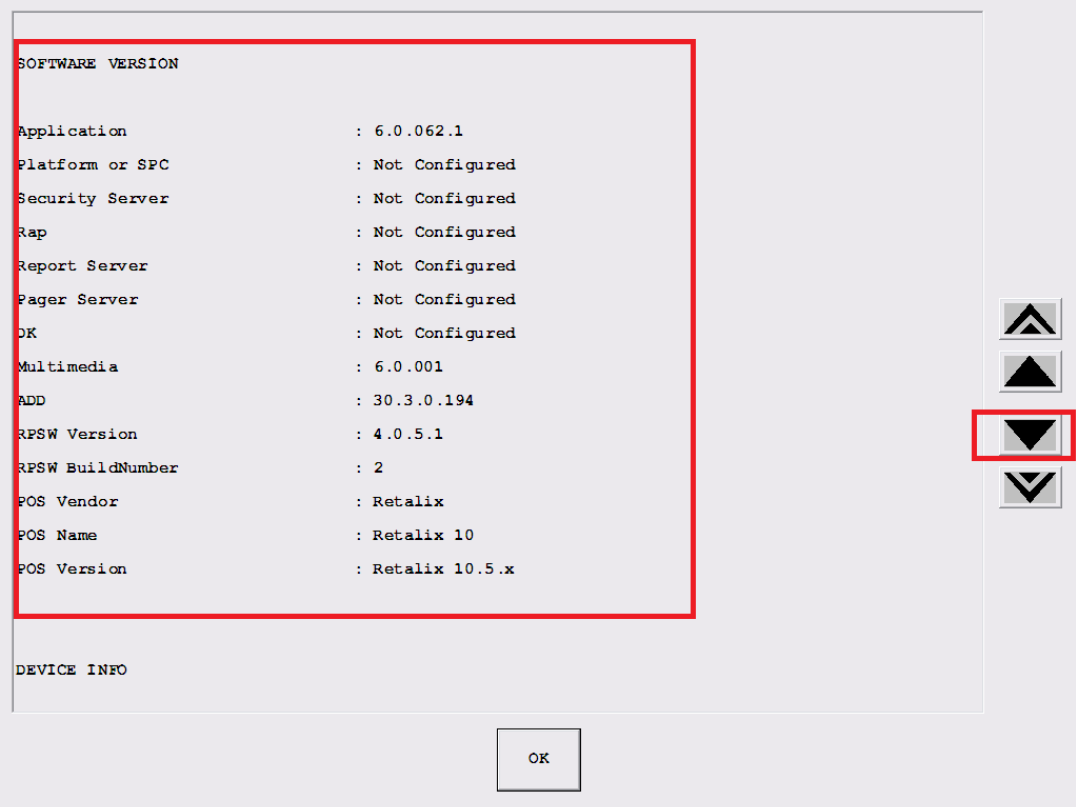
D3. Select Utility.



D4. Select Terminal information

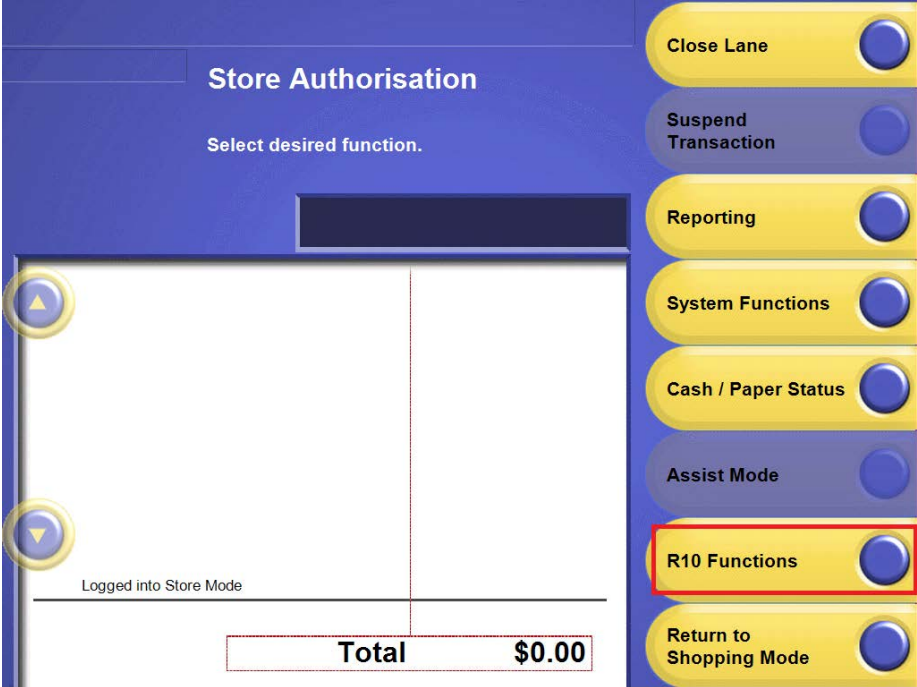


D5. The current SCO software version, POS Vendor, POS Name, and POS Version information will be displayed on the same page.

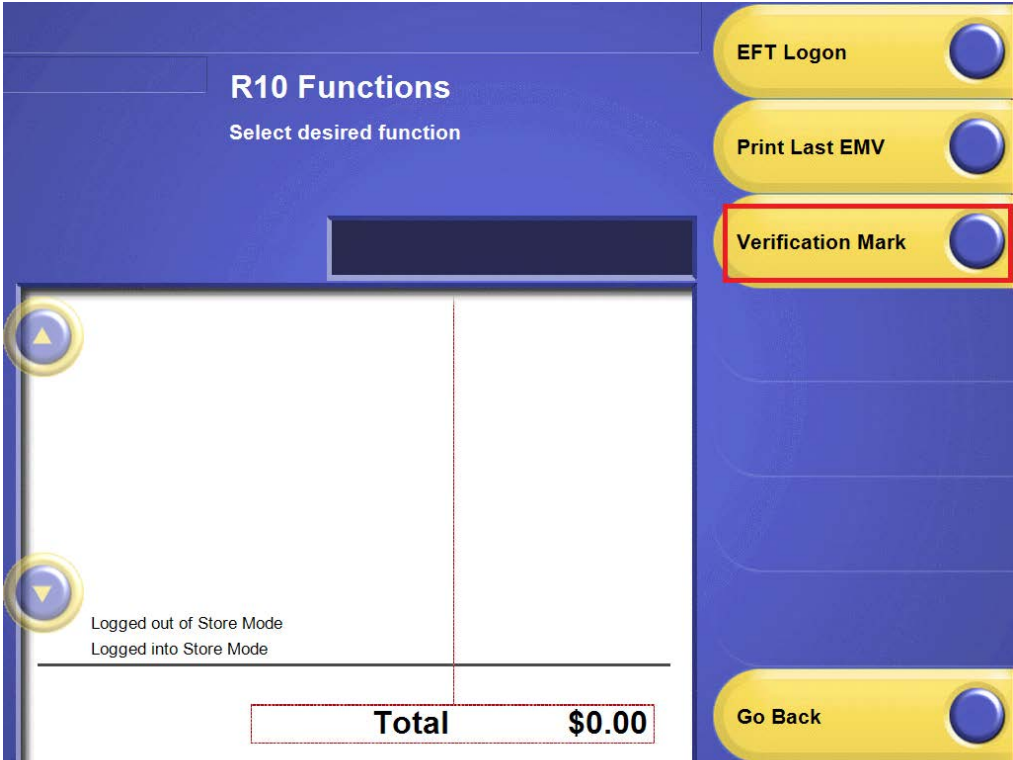


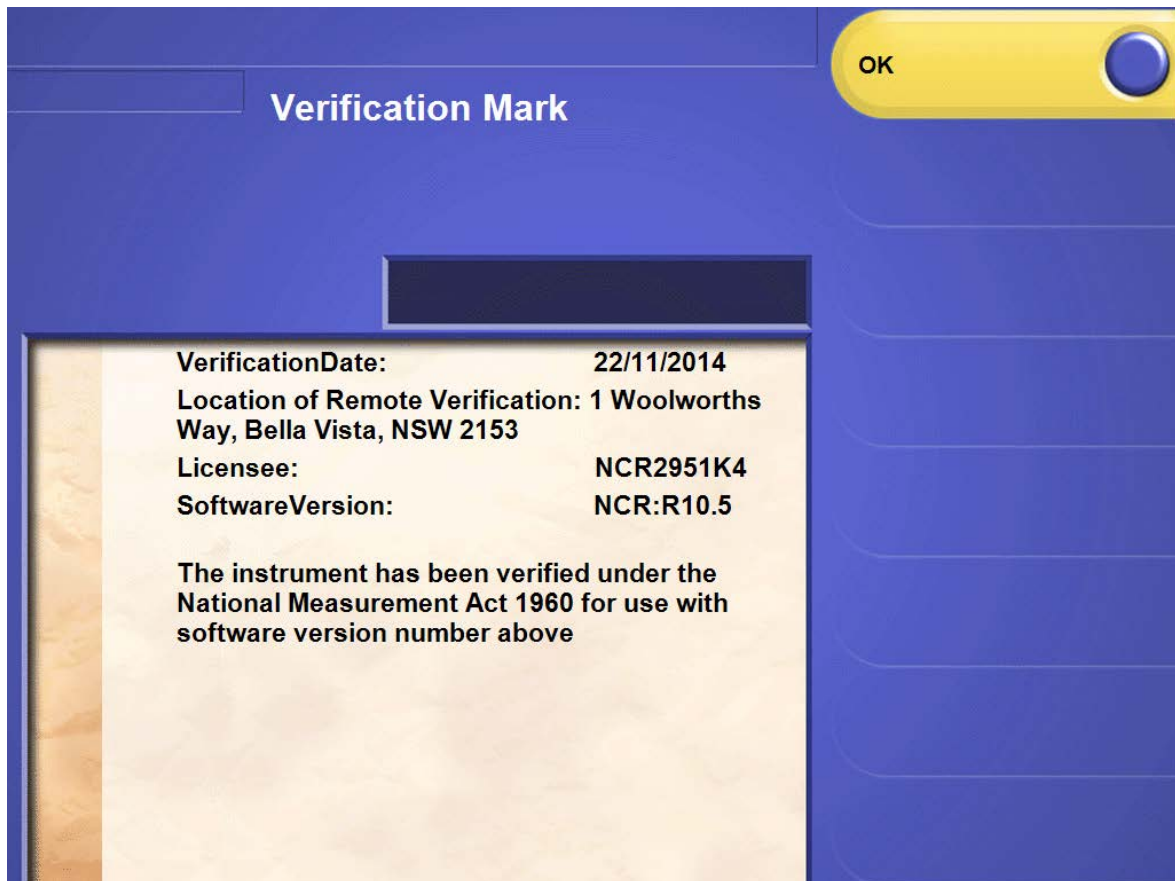
D6. Once the SCO software version, POS Vendor, POS Name, and POS Version information has been confirmed select **<OK>** button to go back to the Utility Functions menu

D7. Select R10 Functions



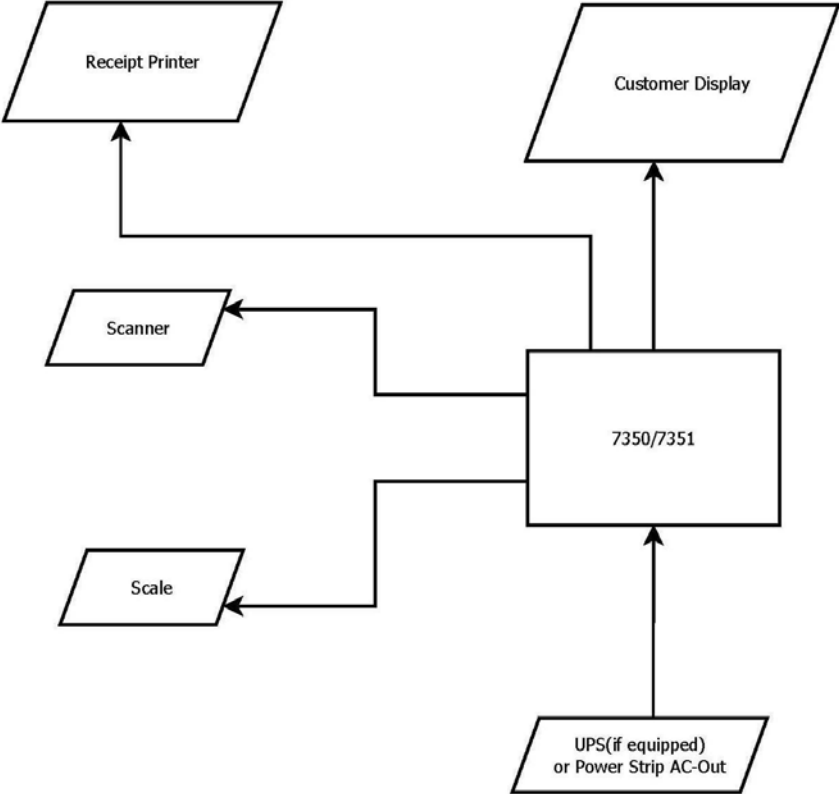
D8. Select Verification Mark





- D9. Once the Coles Point of Sale software version has been verified, select the **<OK>** button to exit.
- D10. Then select the **<Exit>** button to return to the Utility Function menu.

FIGURE S578 – 1



NCR Model 7350 Point of Sale (POS) System (The Pattern)

FIGURE S578 – 2



Accessing Supervisory Button for Software Version Checking

FIGURE S578 – 3



Typical Customer (Self-serve) Display

FIGURE S578 – 4

```

Coles Supermarkets Australia Pty Ltd
Tax Invoice ABN: 45 004 189 708

Coles QA Test Lab                Store: 8432
7 days a week
7 days a week
Phone: (03) 963-54088             Receipt: 7255
Date: 01-Dec-2012                Time: 00:35
Reg 110 Served By: Self Checkout - 560

HASS AVOCADO 1EACH                $
Quantity: 3 @ $1.95 each         5.85
MUSHROOMS PERKG                   6.43
0.644 kg NET @ $9.98/kg
BROWN ONIONS PERKG                3.19
1.067 kg NET @ $2.99/kg
ICEBERG LETTUCE 1EACH             3.38
Quantity: 2 @ $1.69 each
NATURAL ALMOND:PER K PERKG        7.16
0.377 kg NET @ $18.98/kg

Total for 8 items                 $26.01
EFTPOS                            26.01
GST INCLUDED IN TOTAL             $0.00

Supermarkets
Atlanta                           GA US
01/12/12                           00:35
84328432                           NY42B0
***** 4104                         VISA
ANZSmartPay                        AID A0000000031010
APSN 0000                           CHEQUE ACCOUNT

PURCHASE                            AUD$ 26.01
RRN 001100725502                   (00)APPROVED

% = Taxable items

```

A Typical Transaction Record

FIGURE S578 – 5



A typical NCR model 735x (**) Hybrid system (variant 1)

FIGURE S578 – 6



A typical NCR model 7709 system (variant 2)

FIGURE S578 – 7



A typical NCR model 7360 system (variant 4)

~ End of Document ~