



Australian Government

Department of Industry,  
Science and Resources

**National  
Measurement  
Institute**

36 Bradfield Road, West Lindfield NSW 2070

**Supplementary Certificate of Approval  
NMI S785**

Issued by the Chief Metrologist under Regulation 60  
of the  
*National Measurement Regulations 1999*

This is to certify that an approval for use for trade has been granted in respect of the instruments herein described.

Fenwick Software Model Microsoft Dynamics 365 Business Central with enwis Point of Sale (POS) System

submitted by Fenwick Software Pty Ltd  
Level 7, 1 Southbank Blvd  
Southbank VIC 3006

**NOTE:** This Certificate relates to the suitability of the pattern of the instrument for use for trade only in respect of its metrological characteristics. This Certificate does not constitute or imply any guarantee of compliance by the manufacturer or any other person with any requirements regarding safety.

This approval has been granted with reference to document NMI M 7, *Pattern Approval Specifications for Point of Sale Systems*, dated June 2012.

This approval is subject to review at the decision of the Chief Metrologist in accordance with the conditions specified in the document NMI P 106.

DOCUMENT HISTORY

Rev	Reason/Details	Date
0	Pattern approved – certificate issued	15/11/19
1	Variant 1 approved – certificate issued	17/01/23

## CONDITIONS OF APPROVAL

### General

Instruments purporting to comply with this approval shall be marked with pattern approval number 'NMI S785' and only by persons authorised by the submitter.

It is the submitter's responsibility to ensure that all instruments marked with this approval number are constructed as described in the documentation lodged with the National Measurement Institute (NMI) and with the relevant Certificate of Approval and Technical Schedule. Failure to comply with this Condition may attract penalties under Section 19B of the National Measurement Act and may result in cancellation or withdrawal of the approval, in accordance with document NMI P 106.

### Special

Certain aspects of this instrument (in particular transaction record printing formats) are able to be configured by the user. Whilst NMI believes that acceptable formats can be achieved for typical basic sales modes, it is also possible for the instrument to be configured to produce unacceptable formats, and use of some formats may be inappropriate for different sales modes. It is the responsibility of the user to ensure that acceptable and appropriate formats are used in any particular situation.

### Special Conditions of Approval: (weighbridges)

The pattern has not been assessed for compliance with requirements which are outside the scope of document NMI M 7, including those features which control the automation of weighbridge operation, or ticket formats for public weighbridges, or 'axle weighing' or 'end-and-end weighing'.

This Certificate does not constitute or imply approval for these functions. Details of these requirements can be found on the NMI website.

Signed by a person authorised by the Chief Metrologist to exercise their powers under Regulation 60 of the *National Measurement Regulations 1999*.



**Darryl Hines**  
Manager  
Policy and Regulatory Services

## TECHNICAL SCHEDULE No S785

### 1. Description of Pattern approved on 15/11/19

A Fenwick Software model Microsoft Dynamics 365 Business Central with enwis Point of Sale system to provide certain additional facilities for transactions when interfaced to compatible (#) NMI-approved measuring instruments granted with reference to document NMI M 7.

#### 1.1 Key Features

- The system provides point of sale arrangements when connected to NMI-approved measuring instruments fitted with a Mettler Toledo model IND246 digital indicator (approval NMI S564) or other compatible (#) NMI-approved measuring instruments. NMI-approved measuring instruments may include Summing indicators complying with General Certificate S1/0B.
  - The system receives measurement data from the output interface of the approved measuring instrument.
  - Manually entered measurement data shall be indicated as such on a printed transaction record.
  - The system is able to apply a tare value up to the maximum capacity of the approved measuring instrument.
  - The POS controllers may be connected in a network to share common PLU data, for totalisation, and to accumulate and retrieve management information.
- (#) 'Compatible' is defined to mean that no additions/changes to the hardware/software specified in this approval are required for satisfactory operation of the system.

#### 1.2 System Description

The Fenwick Software model Microsoft Dynamics 365 Business Central with enwis Point of Sale (POS) system (Figure 1) comprises:

##### (i) POS Controller

The Fenwick Software model Microsoft Dynamics 365 Business Central with enwis POS controller is a PC-based device that operates a Microsoft Windows-based operating system running Microsoft Dynamics 365 Business Central with enwis version 14.x.xxxxx software. The software version number is displayed by selecting "About" from the Help menu option.

##### (ii) Electronic Indications

Indications shall satisfy the requirements of document NMI M 7, *Pattern Approval Specifications for Point of Sale Systems*.

A HP model computer monitor or equivalent (\*) is connected to the POS controller to provide an indication for the operator (Figure 2).

Information additional to that required by document NMI M 7, including totalisation details and product images, may also be indicated.

Note: There is no NMI M 7 compliant customer display connected to the POS controller.

### **(iii) Printing Devices**

Transaction records shall satisfy the requirements of document NMI M 7, *Pattern Approval Specifications for Point of Sale Systems*.

An Epson model TM-T88IV printer or equivalent (\*) is connected to provide a transaction record printing facility. A typical record is shown in Figure 3.

Note: Tickets have NOT been assessed for compliance with the requirements for Weighbridge Measurement Tickets as given in relevant Licensing Directives published on the NMI website.

(\*) 'Equivalent' is defined to mean other proprietary equipment of the same or better specifications requiring no changes to the software specified in this approval for satisfactory operation of the system.

### **(iv) Multiple Instruments Facility**

The Microsoft Dynamics 365 Business Central with enwis POS system may be connected to multiple approved measuring instruments. The POS system is configured to display which measuring instrument is connected.

The measuring instrument to be used is preselected by the operator prior to assigning the weights against a ticket.

Note: In the case of this feature, each instrument/combination shall be clearly identified to correspond to the appropriate measuring instrument display shown on the POS system display. NMI trade measurement authorities may require additional markings or signs to ensure that these relationships are clear.

### **(v) Truck Weighing Functions**

Providing functions intended specifically for truck weighing applications, including provision for 'truck and product' identification data to be stored in memory.

The truck weighing functions provide for:

- simple vehicle weighing, where the gross weight of a vehicle is determined by a single weighing;
- first/second weighing, where a vehicle is weighed before and after a loading or unloading operation;
- function keys programmed to perform various functions (such as accessing and searching stored vehicle, item, product or client information).

### **(vi) Additional System Facilities**

The system may include additional peripheral devices including but not limited to barcode scanning devices, RFID card readers, driver control stations, programmable logic controllers (PLC), input/output controllers, video surveillance cameras, video overlay devices and other plant/site-specific control systems. The facilities shall not interact with the system in a way that would cause an incorrect indication of the measured quantity or price.

### 1.3 Verification Provision

Provision is made for the application of a verification mark.

### 1.4 Descriptive Markings

The POS controller is marked in a clear and permanent manner, in one location, with the following information:

Submittor's name or mark	.....
Serial number or other unique identifier	.....
Pattern approval number	NMI S785

## 2. Description of Variant 1 approved on 17/01/23

With the POS controller software described in **1.2 System Description** now operating enwis version 16.x.xxxxx software.

### TEST PROCEDURE No S785

The POS system shall be tested in addition to any tests specified in the approval documentation for the measuring instrument/s to which the POS system is connected, as appropriate

The POS system shall be tested in the normal operational mode of the instrument and device, not in 'training mode' or any other management mode.

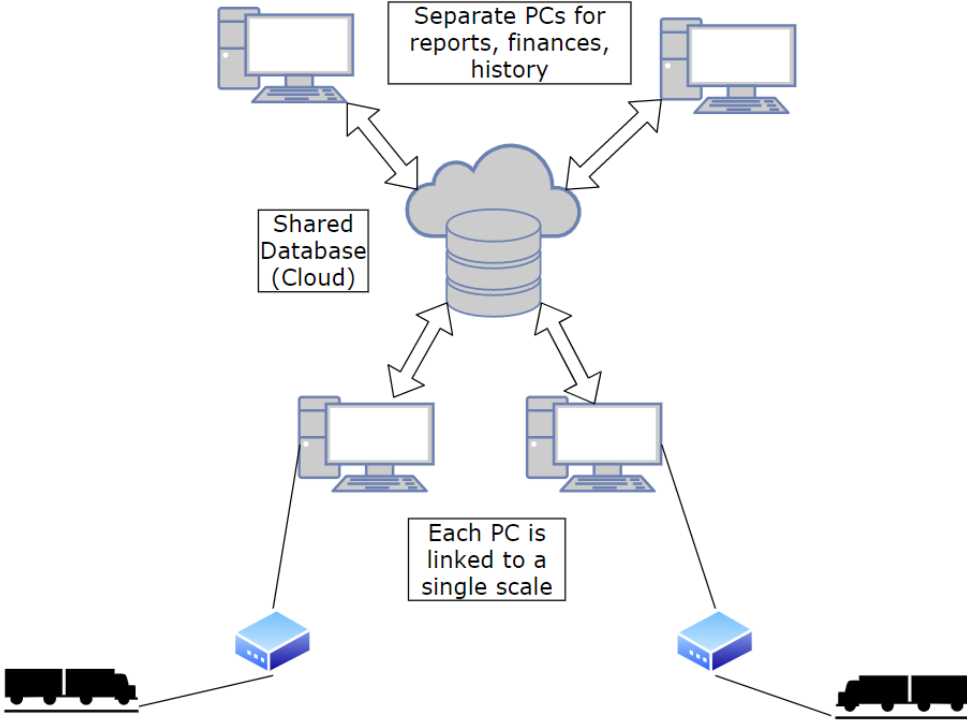
#### Maximum Permissible Error

The maximum permissible error for price computation is  $\pm 0.5$  cent.

#### TESTS

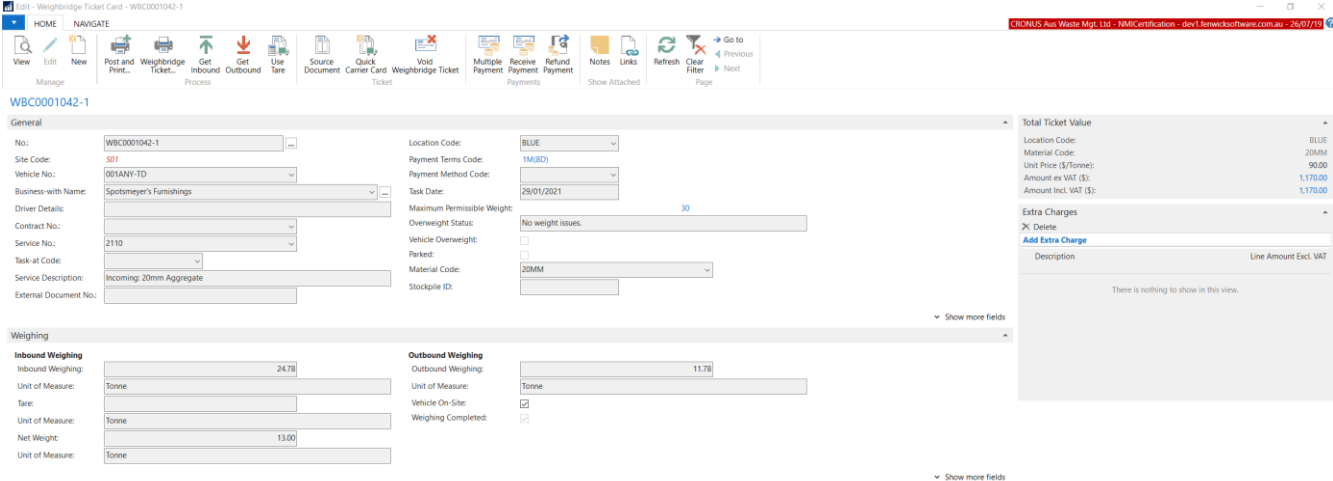
1. Check the software version number/s.
2. Check that the POS system faithfully reproduces the measurement data in the same units and scale interval as the connected approved measuring instrument, e.g. test by using a PLU without a stored tare.
3. Check that the system performs correct price computation, and computes and indicates a correct unrounded subtotal. For cash payment methods, check that any rounding calculation is correct.
4. Perform a measurement with a tare applied and confirm that the POS system correctly calculates and indicates a net measurement result.
5. Manually enter some pre-determined measurement data and ensure that the printed transaction record clearly indicates the transaction as such.
6. For network systems check to ensure that the measurement data printed on the transaction record is correctly reproduced.
7. Ensure that electronic indications and printed information are in accordance with document NMI M 7.

FIGURE S785 – 1



Point of Sale (POS) System

FIGURE S785 – 2



Typical Operator Display

FIGURE S785 – 3

Central - WB

NMI Certification

A.B.N 53001003000

CANBERRA NSW 2600

Phone: +61 (2) 9870 2200



Docket WBC0001045-1

Date: 29/01/21

Time In: 4:35:18 PM | Time Out: 10:05:03 AM

**Customer**

The Cannon Group PLC

Vehicle: 002ANY

Type	Qty.	UOM
Gross:	6.90	t
Tare:	*3.45	t
Net: Incoming: General Solid Waste - Soil	3.45	t

Description	UOM	Qty.	\$/TONNE
Incoming: General Solid Waste - Soil	TONNE	3.45	\$257.21

	Amount
Material Amount Excl. GST	\$887.37
GST	\$88.74
<b>Total Incl. GST</b>	<b>\$976.11</b>

Printed: 29/01/2021 10:05:12 AM

Signature:

\* = Weight Adjusted Manually.

A Typical Receipt

~ End of Document ~